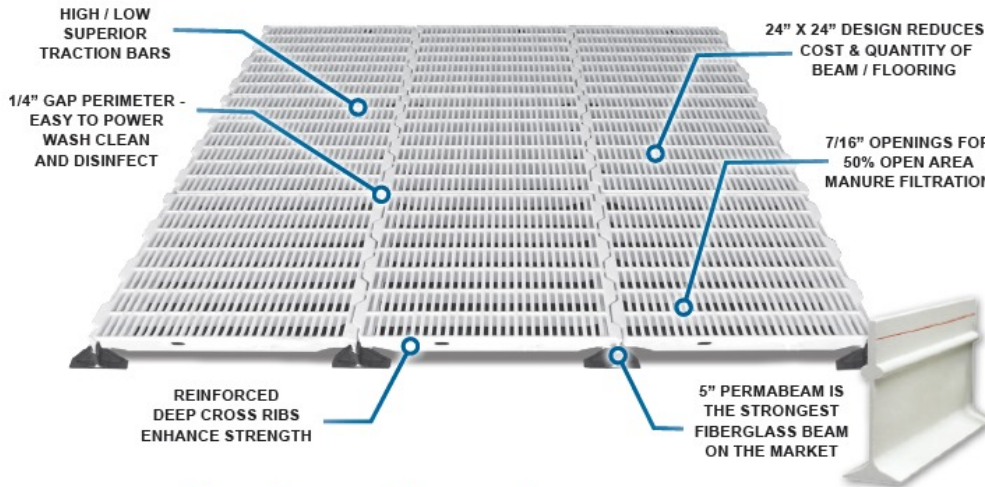




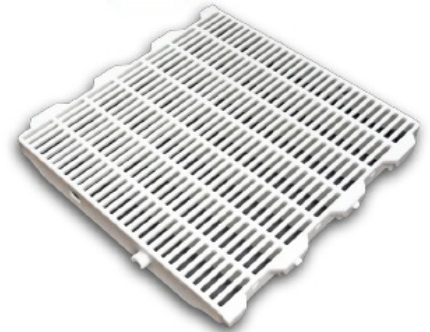
DOUBLE L GROUP LLC

**FILTER-EEZE®**

## 24" x 24" ADVANTAGE NURSERY FLOOR



MADE IN USA



**HIGH IMPACT VIRGIN POLYPROPYLENE SLAT FOR PIGS UP TO 150 POUNDS**

Stock #830309 ..... 24" x 24" Advantage Nursery Floor ..... 8 lbs

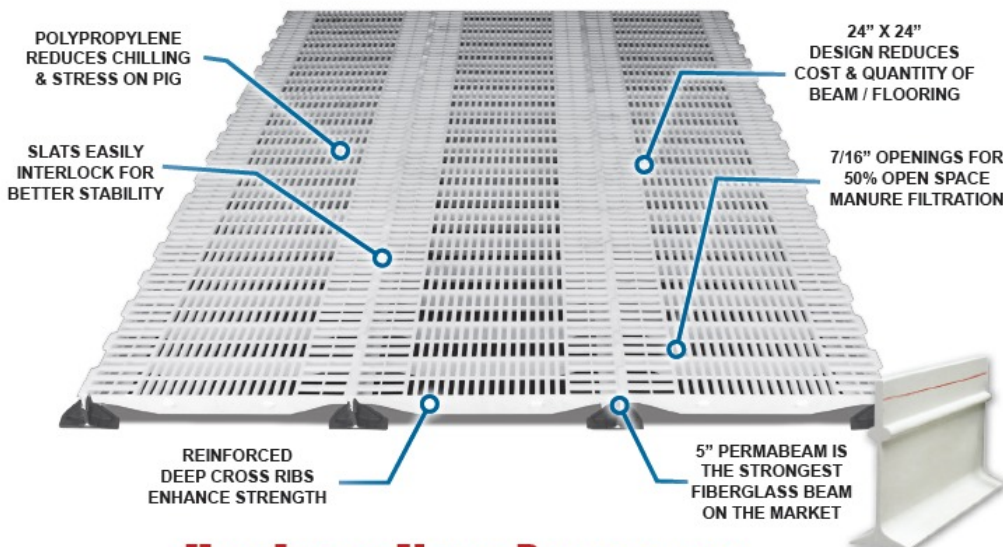
- Easy to clean and disinfect polypropylene slat, reducing transmission of diseases
- **Rugged virgin polypropylene** is non-conductive - reducing chilling and stress on pigs
- Solid plastic construction is rust / corrosion proof and resists bacteria build-up, shedding waste easily
- Heavy-duty design with excellent impact resistance



DOUBLE L GROUP LLC

**FILTER-EEZE®**

## 24" x 24" EXCELERATOR NURSERY FLOOR



MADE IN USA



**HIGH IMPACT VIRGIN POLYPROPYLENE SLAT FOR PIGS UP TO 75 POUNDS**

Stock #830315 ..... 24" x 24" Advantage Nursery Floor ..... 6 lbs

- Easy to clean and disinfect polypropylene slat, reducing transmission of diseases
- **Rugged virgin polypropylene** is non-conductive - reducing chilling and stress on pigs
- Solid plastic construction is rust / corrosion proof and resists bacteria build-up, shedding waste easily
- Heavy-duty design with excellent impact resistance



DOUBLE L GROUP LLC

**FILTER-EEZE®**

## POLYPROPYLENE PLASTIC FLOORING



MADE IN USA



### 12" x 18" Maxima Nursery

Item #13006 Stock #830318 3 lbs

### 12" x 24" Maxima Nursery

Item #13111 Stock #830310 4 lbs

- 3/8" openings for 44% open space filtration
- Rugged polypropylene
- Non-conductive - reduces chilling and stress
- Crowned surface
- For pigs up to 75 lbs



### 12" x 18" Maxima Sow Slat

Item #13008 Stock #830330 4 lbs

### 12" x 24" Maxima Sow Slat

Item #13010 Stock #830322 5 lbs

- 7/16" openings for 42% open space filtration
- Rugged polypropylene
- Interlocks on all four sides for strength
- Textured surface with anti-slip bars for traction
- Crowned surface for improved drainage
- Tapered cross pieces reduce manure build-up



### 18" x 42" Maxima Creep

Item #13042 Stock #830312 8 lbs

### 18" x 48" Maxima Creep

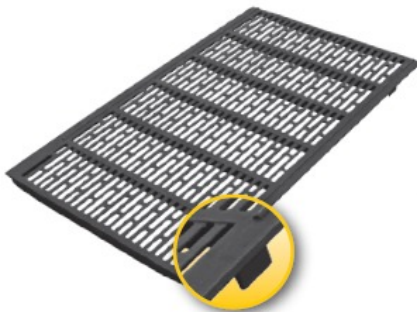
Item #13048 Stock #830323 9 lbs

- 3/8" openings for 44% open space filtration
- Rugged polypropylene
- Non-conductive - reduces chilling and stress
- Textured surface for traction
- Crowned surface for drainage



DOUBLE L GROUP LLC

## VALUCAST CAST IRON FLOORING



### 24 x 42 ValuCast

Item #13575N Stock #830328 64 lbs

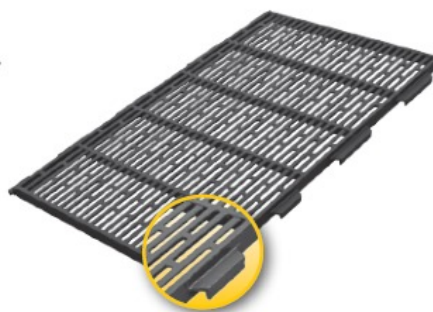
### 24 x 45 ValuCast

Item #13550N Stock #830328 68 lbs

### 24 x 48 ValuCast

Item #13555 Stock #830328 72 lbs

- 7/16" openings / non-porous
- High / low traction bars for pigs
- Supports 1,763 lbs. per slat



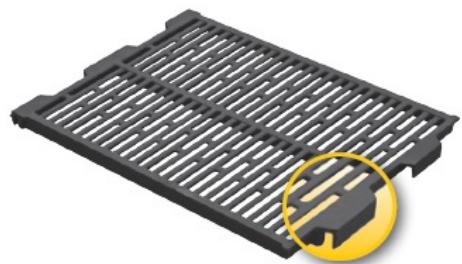
### 24 x 42 Raised Interlocking

Item 13570 Stock #830125 62 lbs

### 24 x 48 Raised Interlocking

Item 13572 Stock #830125 70 lbs

- 7/16" openings
- Combination round / flat surface
- High / low traction bars for pigs
- Non-porous



### 24 x 18 Flat Interlocking

Item #13560N Stock #830325 25 lbs

### 24 x 24 Flat Interlocking

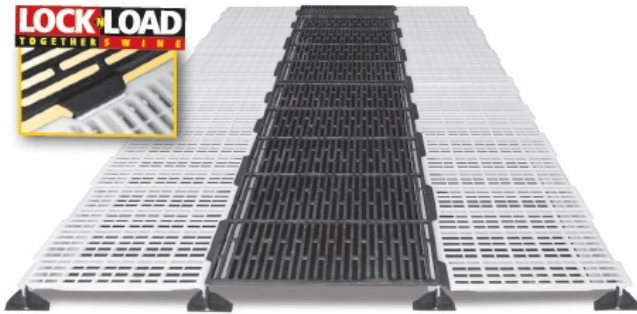
Item #13565N Stock #830325 34 lbs

- 7/16" openings
- Combination round / flat surface
- High / low traction bars for pigs
- Non-porous





## FARROWING FLOORING



### IVP57 Cast Iron / Plastic Creep Farrowing Floor

Interlocking ValuCaste Cast Iron & Heavy-Duty Filter-eeze® Plastic Polypropylene Creep Slat w/PermaBeam & End Supports

- Filter-eeze® plastic polypropylene creep slats are warm for little pigs and do not rob them of body heat - less chilling, fewer diseases, and reduced little pig crush deaths
- Cast iron and creep slats interlock creating a nearly flat floor
- End supports promote beam stability
- Lock-n-Load assembly with excellent washability
- 5" PermaBeams strongest beams on the market - do not rust or corrode

Available in 7 ft., 7 1/2 ft., and 8 ft. lengths



### PS57 Schonlau / Plastic Creep Farrowing Floor

Schonlau Cast Iron & Heavy-Duty Filter-eeze® Plastic Polypropylene Creep Slat w/PermaBeam & End Supports

- Lock-n-Load assembly
- Cast iron and creep slats interlock together
- End supports to promote beam stability
- 5" PermaBeams, plastic creep, and Schonlau cast iron: the strongest cast iron on the market

Available in 7 ft., 7 1/2 ft., and 8 ft. lengths



### WV57 ValuCaste / Ultra-Slat Farrowing Floor

Interlocking ValuCaste Cast Iron & Ultra-Slat Steel Creep

- Lock-n-Load assembly
- 3-gauge woven wire
- Self-supporting
- Corrosion-resistant, all-welded, hot-dipped galvanized steel creep and frame



### TV57 Tri-Creep / ValuCaste Farrowing Floor

Self-Supporting Tri-Creep Steel & Interlocking ValuCaste Cast Iron

- Cleanest creep floor on the market! Triangular steel bars have 50% openings to allow manure to easily filter into pit
- Constructed of corrosion-resistant, non-porous, hot-dipped galvanized steel and durable ValuCaste cast iron flooring
- Self-supporting farrowing floor - no frames or supports needed
- Lock-n-Load assembly - cast iron and creep slats interlock together
- Easy to install and power wash clean



## FLOORING ACCESSORIES

LOOK FOR DOUBLE L  
MARK OF QUALITY



Stock #830314  
Item #12305

**PermaBeam**  
Strongest Beam  
on the Market!

Non-porous  
Fiberglass Composite



Stock #830313  
Item #12318

**Plastic Clip**

Protects bottom  
of beam from  
rubbing on concrete



Stock #  
Item #12319

**Plastic Triangle**

Protects and  
stabilizes  
fiberglass beam



**Leg Support Kit**

2 Supports Item #12301  
1" - 12' Tubing Item #12300

Beam support for  
longer clear spans



**J-Bolt, Washer,  
& Locknut**

6.5" (165.1 mm)  
Item #12362 Stock #830105

7.5" (190.5 mm)  
Item #12360 Stock #820106

3/8" stainless steel  
Specifically designed to fit  
PermaBeam and lock flooring  
securely in place

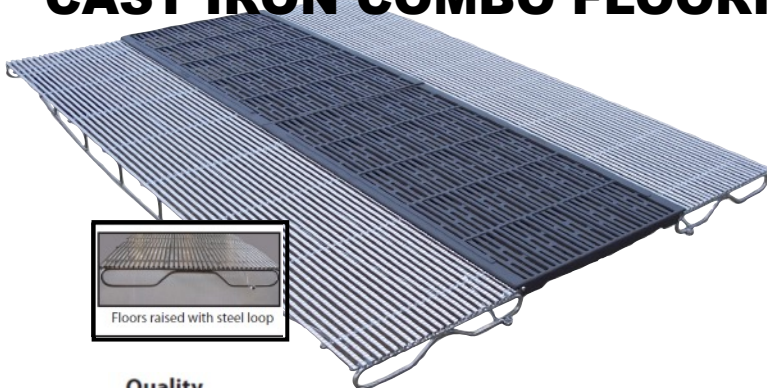
# TRI-BAR®

THE ORIGINAL

**NOOYEN**  
Professionals in Pig Flooring

## CAST IRON COMBO FLOORING

A cool, strong, hygienic cast iron sow section.  
A clean, hygienic Tri-Bar creep section.



### Quality

The sow section is constructed of high quality ductile iron. The steel is made in Australia and cast in China. The durability of iron assures a reliable and strong section for the sow. The creep section is constructed of special Tri-Bar steel to Nooyen specifications. The floors are hot dip galvanized on site, in our state of the art facility.

### Disease Free

Tri-Bar steel is non-porous. Bacteria cannot live in galvanized steel which means Tri-Bar does not hold disease.

### Size

Cast iron is available in 42" and 48" sections, allowing for 7', 7.5', 8' long crates.

### OPTIONAL FEATURES

#### Soft-Grip

Soft-Grip is a texture added to the floors by forming indentations in the steel bars providing additional grip for baby pigs and also added traction for the sow.

#### Loop Ends

Floors can be raised from 2.25" to 4.25" to allow access to the pit. A 1/2" nut is welded to the loop to secure floor to concrete

### Traction

The top surface of cast iron has alternating high/low bars providing traction and stability for the sow, preventing slipping and injuries.

### Self-Supporting

A frame is not required thanks to the Tri-Bar creep sections supporting the cast iron. Installation calls for laying the Tri-Bar cast combo over the pit, placing 1 1/2" of flooring on the pit ledges.

### Easy to Clean

The Tri-Bar Cast Iron combo is easy to clean. Power wash from the top in both directions, conveniently cleaning the top and bottom of floor.



# TRI-BAR®

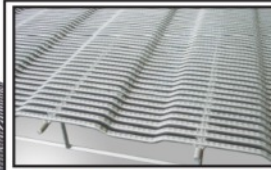
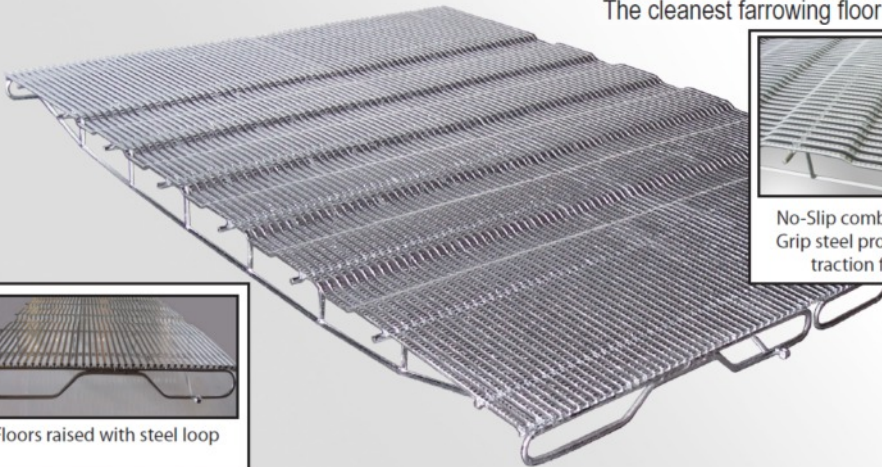
THE ORIGINAL



Professionals in Pig Flooring

## FARROWING FLOORING

A cool, strong, hygienic Tri-Bar steel floor.  
The cleanest farrowing floor on the market.



No-Slip combined with Soft-Grip steel provide maximum traction for the sow.



Floors raised with steel loop

### Quality

The sow section is constructed of special Tri-Bar steel to Nooyen specifications. The floors are hot dip galvanized on site, in our state of the art facility.

### Self-Supporting

All Tri-Bar farrowing floors are totally self-supported. Simply install the floor 1 1/2 inches on the concrete wall.

### Disease Free

Tri-Bar steel is non-porous. Bacteria cannot live in galvanized steel which means Tri-Bar does not hold disease.

### Loop Ends

Floors can be raised from 2.25" to 4.25" to allow access to the pit. A 1/2" nut is welded to the loop to secure floor to concrete.

### No-Slip

Our patented No-Slip is standard in all farrowing floors. No-Slips are necessary steps in the Tri-Bar to assist the sow when standing up or lying down.

### Easy to Clean

Tri-Bar farrowing floors have a 50% opening. The triangular bars allow for easy cleaning. The flooring does not have to be turned over to clean the bottom side. Simply pressure wash it from the top, in both directions.

### Size

Tri-Bar farrowing flooring is custom made with lengths up to 11 feet and a standard width of 2 1/2 feet. Self-supported farrowing flooring has an average weight of 6.7 lbs. per square foot.

### OPTIONAL FEATURES

#### Soft-Grip

Soft-Grip is a texture added to the floors by forming indentations in the steel bars providing additional grip for nursery pigs and also added traction for the sow.

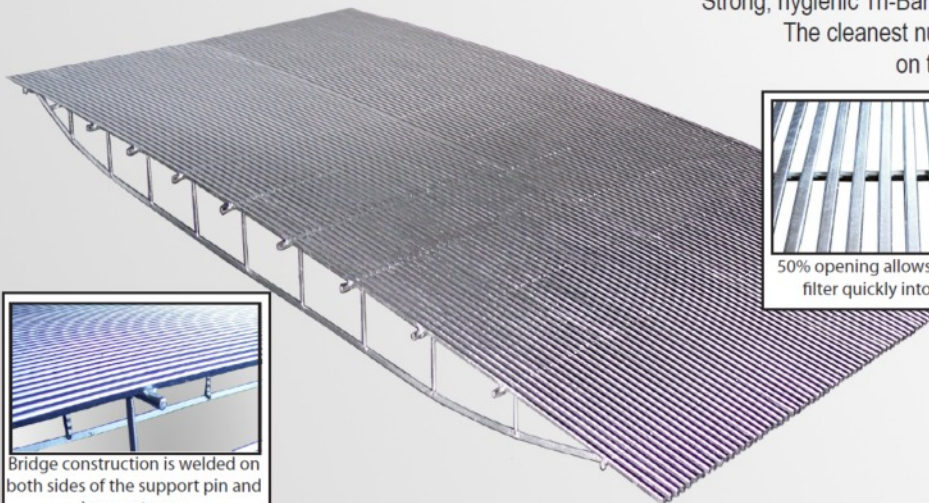
#### Non-Supported

Non-Supported nursery or farrowing floors are the perfect flooring to replace woven wire. It can be installed in the existing working frame.

## 1-800-328-8842

## NURSERY FLOORING

Strong, hygienic Tri-Bar steel floor.  
The cleanest nursery floor  
on the market.



50% opening allows manure to filter quickly into the pit.



Bridge construction is welded on both sides of the support pin and is very strong.

### Quality

The nursery floor is constructed of special Tri-Bar steel to Nooyen specifications. The floors are hot dip galvanized on site, in our state of the art facility.

### Easy to Clean

Tri-Bar nursery floors have a 50% opening. The triangular bars allow for easy cleaning. The flooring does not have to be turned over to clean the bottom side. Simply pressure wash it from the top, in both directions.

### Nursery Floor Limit

Tri-Bar nursery floors are designed for pigs up to 120 lbs.

### Disease Free

Tri-Bar steel is non-porous. Bacteria cannot live in galvanized steel which means Tri-Bar does not hold disease.

### Size

Tri-Bar nursery flooring is custom made with lengths up to 12 feet and a standard width of 2 1/2 feet. Self-supported nursery flooring has an average weight of 6.7 lbs. per square foot.

### Self-Supporting

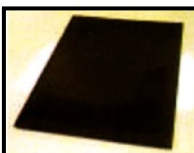
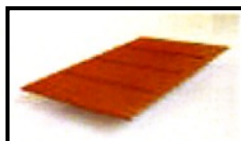
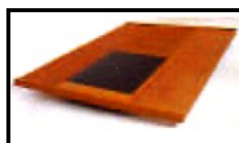
All Tri-Bar nursery floors are totally self-supported. Simply install the floor 1 1/2 inches on the concrete wall.





## Farrow Flooring

Healthy sows and increased weaning weights mean a larger profit. Dura Trac® farrowing units are designed for traction, warmth, and prevention of floor related injuries. The steel is completely plastisol coated for rust and corrosion resistance and a nonporous, durable coating.

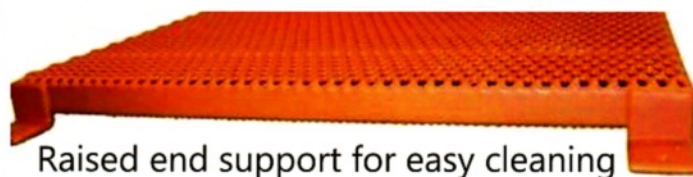
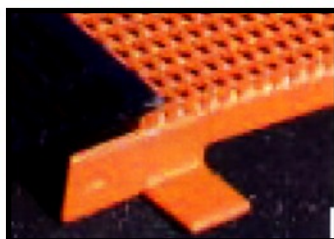


Dura Trac® Clearspan Farrow Basic Unit is completely self supported. It includes a 1" center rise which reduces crushing and allows newborns easier access to underside nipples. The 24" wide welded rod center sow area is wide enough for the sow, but not so wide to lose advantage of raised center. The Dura Saver feed saver is a high density polyethylene floor with a diamond plate finish for added traction. Dura Saver hardware is included for easy installation.

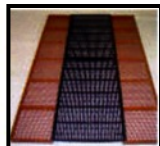
### Dura Trac® Clearspan Creep Side Options:

- Plastisol Coated Welded Rod or Expanded Metal
- Solid Plates
- Cast Iron or Triangular Rod Centers
- Feet, Tabs, Side Extensions
- Heat Pad Positioners, Cord Holds
- Notches
- Side Lips

**Durability + Traction = DURA TRAC®**

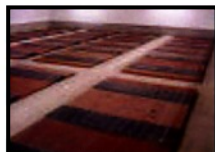


Raised end support for easy cleaning



### Dura Trac® Clearspan Creep Sides

for pig comfort and cleanliness, and cast iron center for cool and durable sow comfort. Setting up the flooring before the walls speeds up construction



### Dura Trac® Clearspan Expanded Metal Creep Sides and a Cast Iron center.

Also has a **heat pad positioner** option. This farmer uses an electric heat mat with a bottom electrical connection. This flooring option is available to help stabilize the heat mat and keep the electric cords out of the way. The cast iron center will help keep the sow cooler.



### Dura Trac® Clearspan Expanded Metal Creep Sides and a Cast Iron center

which spans from the creep side on the left of the sow to the creep side on the right of the sow.



**Dura Trac® Clearspan Creep Sides** with a raised galvanized steel center and a Kane electric mat. The galvanized steel center will help keep the sow cooler.



# Farrow Flooring



**Dura Trac® Clearspan Creep Side Expanded Metal**  
Custom Creep Sides designed and built for your specific needs. Many options available



**Dura Trac® Clearspan Creep Side Expanded Metal**  
with double solid plate, cast iron centers, and feet. The cast iron center keeps the sow cooler.



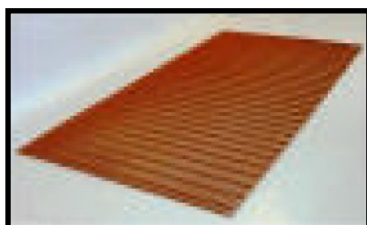
**Dura Trac® Original Creep Side Expanded Metal\***  
Great for new building and replacement. Custom built to be used with your supports.



**Dura Trac® Hot Water Heat Plate** to be used in the creep area for piglets for safe and uniform heat. Flush mounted for durability. Custom manufactured to fit most existing installations. Standard sizes are 1' x 4' and 2' x 4'.



**Dura Trac® Clearspan Creep Side** with cast iron center and [Kane single heat mat](#). The heat mat is recessed, energy efficient, easy to clean, and offers comfortable heat. Single and double sizes available. All mats available in 110 or 220 volt. The cast iron center keeps the sow cooler.



**Dura Trac® Original Farrow Welded Rod**  
Custom options available such as size of floor, perimeter rod, notching, and holes. Great for new building and for replacement. Built to be used with your supports.



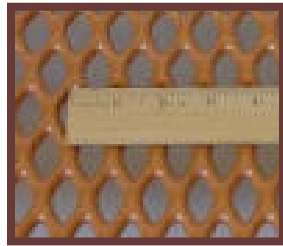
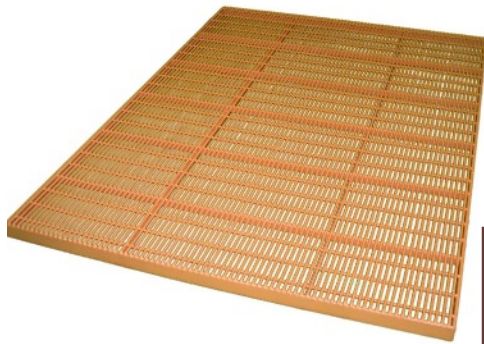
**Dura Trac® Original Farrow Expanded Metal**  
shown with and without attached Dura Saver feed saver. Attach the Dura Saver to high-wear areas

## 1-800-328-8842

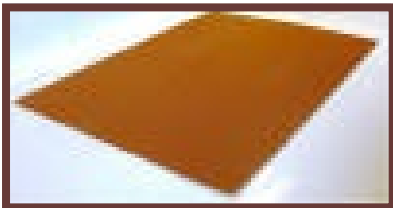
### Nursery Flooring

#### Key Benefits of Dura Trac® Nursery Flooring

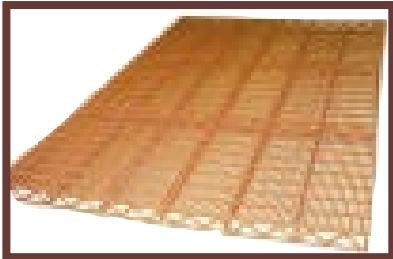
- Animal comfort and cleanliness
- Convenient options to customize the floor to your needs
- Designed for traction, warmth, and prevention of floor related injuries
- **Dura Trac® sets the standard in quality built animal flooring**



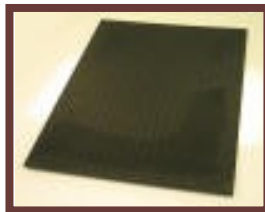
**Dura Trac® Clearspan Nursery Welded Rod and Expanded Metal** - Available in custom lengths up to 12' (in limited widths). Convenient options available to customize the floor to your needs. All Dura Trac® flooring is 100% plastisol (PVC) coated, therefore they will not conduct electricity.



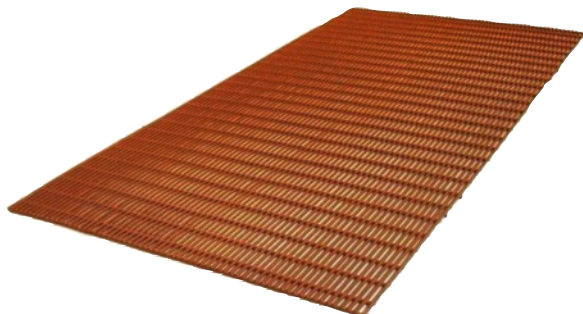
**Dura Trac® Original Expanded Metal\*** Custom sizes available. Built to work with your supports. Some options include perimeter rod, notching, and holes.



**Dura Trac® Truss Welded Rod** - Available in widths of 30" and 60". Strong enough to span pits up to 10 feet wide without additional support. Quick and easy to install. Supports pigs up to 60 pounds



The **Dura Saver** can be attached to high wear areas.



**Optional Open End**



**Dura Trac® Original Nursery Welded Rod\*** Custom sizes available. Built to work with your supports. Some options include perimeter rod, notching, and holes.





## Product Description

- Flooring is easy to clean up between turns.
- Flooring panels can be cut every 4" (102mm) which eliminates waste.
- Unique stabilizer corner provides a full inch of vertical beam support - twice the depth of other panels. One inch of vertical support means the support beam won't tip over; your floor is more stable and durable.
- Panel Sizes Available:

\* 18" x 24" (457mm x 610mm)

\* 24" x 24" (610mm x 610mm)

\* 1/4" x 3" x 96" (6mm x 76mm x 2,438mm)

\* 1/4" x 5" x 84" (6mm x 127mm x 2,134mm)

\* 1/4" x 5" x 90" (6mm x 127mm x 2,286mm)

\* 1/4" x 5" x 96" (6mm x 127mm x 2,438mm)

\* 1/4" x 5" x 120" (6mm x 127mm x 3,048mm)

\* 1/4" x 5" x 144" (6mm x 127mm x 3,658mm)

\* 5mm x 5" x 120" (5mm x 127mm x 3,048mm)

- 3" (76mm) Beams have a max span up to 8' (2.44m) on 18" (457mm) centers for nursery pigs.
- 5" (127mm) Beams have a max span up to 12' (3.65m) on 18" (457mm) centers for nursery pigs.
- 5" (127mm) Beams have a max span up to 10' (3.05m) on 24" (610mm) centers for nursery pigs.
- Plastic perimeter coving comes in 10' (3.05m) length.
- Fiberglass beam clips protect the fiberglass beam from wear.

## Benefits

- Premium polypropylene material sheds waste, resists disease and adds durability.
- Warm floor surface keeps pigs comfortable for less stress.
- Textured surface offers superior traction and promotes rapid transfer of waste to pit. Pigs move around easily and comfortably.
- Minimum waste during installation - panels are designed so they can be cut every four inches (width-wise) so fitting is easy and scrap is kept to a minimum.
- Solid fiberglass beam design is stronger than other thin-walled fiberglass beams. The solid, filled construction leaves no gaps for rodents to infest.



**1-800-328-8842**

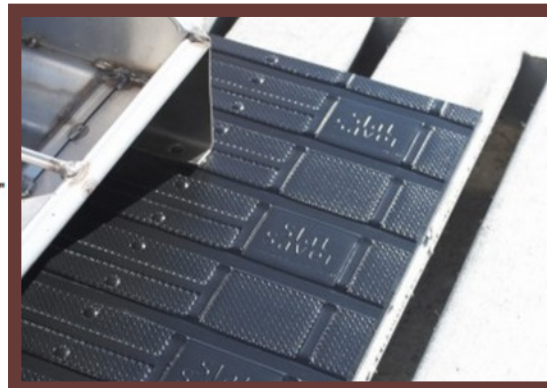






## SLAT SAVER

| Stock # | Description / Size                |
|---------|-----------------------------------|
| 815406  | .....SLAT SAVER 46 3/4" X 72"     |
| 815407  | .....SLAT SAVER 46 3/4" X 114"    |
| 815408  | .....SLAT SAVER 46 3/4" X 120"    |
| 815409  | .....SLAT SAVER 46 3/4" X 46 3/4" |
| 815410  | .....SLAT SAVER 46 3/4" X 48"     |
| 815411  | .....SLAT SAVER 46 3/4" X 60"     |
| 815412  | .....SLAT SAVER 46 3/4" X 50"     |
| 815413  | .....SLAT SAVER 46 3/4" X 138"    |
| 815414  | .....SLAT SAVER 46 3/4" X 141"    |
| 815415  | .....SLAT SAVER 46 3/4" X 90"     |
| 815416  | .....SLAT SAVER 46 3/4" X 75"     |



**Extending slat life** - Slat Saver is a high-density plastic mat placed under feeders to protect new slats or stop concrete erosion on older slats.

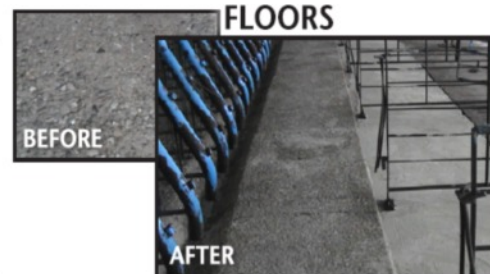
**Slat Saver design provides animal traction** - Multidirectional protrusions and cleats are imprinted on Slat Saver to safely supply animal footing. They are grooved and spaced to capture, control and drain all harmful liquids directly to the pit below.

**Slat Saver is tough** - Slat Saver is a proven product with tens of thousands in use today bearing up to the wear of routing hooves at the feeder. Slat Saver is impervious to acids, salts and whey. It prevents disease and cleans with a mere whisk of a pressure washer.

**Slat Saver eliminates poured pads** - Concrete won't protect concrete. Let durable Slat Saver take the abuse. Slide Slat Saver in place, tie it down with the provided non-corrosive hardware, and you are finished. It's that simple.

## CON-KORITE *PURE-CEMENT TECHNOLOGY!*

### LONG LASTING CONCRETE REPAIR



**PREFERRED BY 1,000S  
OF PORK PRODUCERS!**

**NOW AVAILABLE  
FROM**

**PALS**  
Supplier Of Choice

Do the repairs yourself or contact our Service Department