

1-800-328-8842



Take Control!

The *Ventra™ PRO* Controller from VAL-CO® provides many options.

VAL-CO is proud to introduce the Ventra Pro Controller with options that can help to save you time and money.

Features & Benefits:

- **One-Touch Access to Pertinent Information:** Daily high/low temperatures, water usage, feeder run times, etc. all available in one simple menu at the touch of a button.
- **Plug In Relays:** Make it easy to swap parts in the field with minimal downtime.
- **Built-In Assistant:** Shows data points that fall outside of acceptable parameters for quick and easy diagnosis of problems.
- **Multiple Programs:** Stored in one SD card for quick changing of seasonal ventilation parameters.
- **Track Propane Usage:** Quickly see when expenses are climbing, and correct the cause before it's too late.
- **Heater/Curtain Zone Interlock:** Reduce wasted fuel by preventing heaters from turning on if the curtains in the same zone are open by more than 1".
- **Heat Purge:** Heated air holds more moisture, so less air needs to be exhausted to remove moisture, and gentler temperature swing is easier on the animals for improved health.
- **Curtain Exercise Routine:** When hot weather causes curtains to stay open day after day, rodents can begin to build nests inside the curtain folds. The new exercise routine can fully close and open the curtains automatically, which will dump out the nests and prevent damage to your curtains.
- **Outside Temp Influence/High Temp Alarm:** Reduce nuisance alarms during warm weather; high temperature alarm will be adjusted based on high outside temperatures.
- **English or Spanish Language:** Rapid "key stroke" to toggle between Spanish or English language menus helps make the controller easily accessible to different workers.



The VAL-CO family of products provides all your equipment needs.

- Complete Housing Systems
- Breeder Systems
- Feeding Systems & Storage
- Watering Systems
- Controllers
- Heating and Cooling
- Fans, Inlets & Chimneys
- Scales
- Cremators



Performance You Can Count On

VENTRA SENSORS

696275	Ventra Temp Only Sensor Model 940
696278	Ventra Temp Air Sensor Model 935
696279	Ventra R/H Sensor
696289	Ventra Feed Sensor
6961161	Ventra Static Pressure Sensor Kit (w/enclosure)



1-800-328-8842

New



The Industry's First Color Touch Screen Alarm System

The AA 128T is equipped with all of the same great features that made previous Agri-Alert models so reliable, but the 128 offers so much more.

- 7-inch color touch screen allows all zones to be seen at once
- Internet connectivity provides remote access, eliminating your need to go to the barn every time it notifies you*
- Email and SMS notifications
- Modular architecture allows you to design a system that's the right size for your operation
- 128 zones lets you monitor a large site with a single system*
- Phone dialer provides guaranteed delivery of alarm notification even if you don't have internet
- Built-in security makes sure only authorized users can adjust the system

Flexible Zone Viewing

• Display all 128 zones in a single screen view, allowing for easy scanning of active alarms throughout the entire system.

Advanced Zone Filtering Options

- Filtering zones by their current status allows you to easily view zones that may need immediate attention.
- Filtering zones by their type allows you to quickly view all zones of a specific function.

Easily Accessible Zone Settings

• With one-touch, view historical information and records for each individual zone.

The Agri-Alert 2400 T

Stock #: 696866



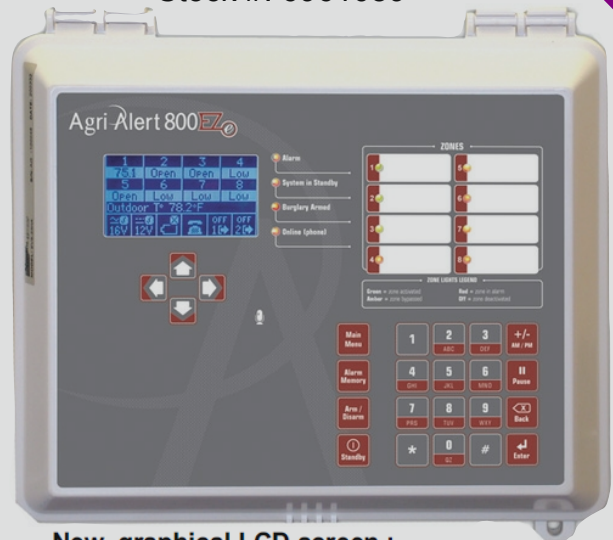
8 supervised zones that can be activated or bypassed individually or in groupings
 Expandable to 24 zones using expansion cards.....8 zones per expansion card
 Zones can be configured for dry contact, temperature, 4-20 ma input, 0-5 volt input, pulse count, or burglary
 2 output relays operable from the keypad or by remote phone
 Built-in or remote microphone for on-site listening
 Remote cancel capabilities for siren or revolving light output
 Outdoor temperature response feature. (uses 1 zone)
 Can call up to 8 different phone numbers
 Programmable system ID message
 Auxiliary 12 volt dc power supply

Agri-Alert Sensors

696023 Agri Alert Norsol 1' Probe Orange Cap
 696389 Agri Alert Norsol 30' Probe Orange Cap

The Agri-Alert 800 EZ

Stock #: 6961089



New, graphical LCD screen :

- View information quickly & more clearly ;
- Intuitive screen design;
 Easy navigation through menus.
- Bright Tri-color status LEDs for each zone;
- Easy to service PCB with plug-in connectors;
- Re-settable fuses on PCB; no more blown fuses to change;
- Integrated rechargeable back-up battery;
- Programmable using PC software and SD card;
- Separate plug-in phone dialer card for easy serviceability;
- 2 output relays that can be activated by phone;
- Can call up to 8 different phone numbers (home phones, pagers, cell phones, etc);
- Recordable messages for system id and individual zone voice labeling;
- Acknowledge alarms by phone;
- Call in from off site for zone temperatures & system status reports;
- Auxiliary 12vdc power supply (AA-WM3000 wireless compatible);
- Outdoor temperature compensation feature (requires additional card).



Sensaphone Alarm Monitor - Model 400

Stock#: 599060

4 Configurable Inputs Dials up to 4 Phone Numbers

The Sensaphone Alarm Monitor is an inexpensive way to monitor any type of facility. Once the Sensaphone detects a problem it automatically starts dialing your pre-programmed phone numbers and advises you of the problem. It continues to dial until someone responds to the call.

Each unit monitors power and temperature and the line seizure feature gives the unit the ability to 'seize' line when it needs to dial unit. This sensaphone has a custom voice messaging, can dial your beeper, pager or cell phone. The Listen-In feature allows you to hear on-site sounds. The model has an output for a siren. This Sensaphone Model 400 uses 6 - 1.5 volt C cell batteries as backup (not included). This unit has an operating range of 32° F to 120° F with a remote temperature sensing range of -20° F to 150°F. Comes with a 6' power cord and uses the



Moisture Proof Remote Temperature Sensor - 2.8 K
 Stock#: 599061



Sensaphone Alarm Monitor - Model 800

Stock#: 599059

8 Configurable Inputs Dials up to 8 Phone Numbers

The Sensaphone Alarm Monitor is an inexpensive way to monitor any type of facility. Once the Sensaphone detects a problem it automatically starts dialing your pre-programmed phone numbers and advises you of the problem. It continues to dial until someone responds to the call.

CONTROLS

59

AutoFlex modular controls

...work with **Select Automation** software to control equipment according to your settings

- ▶ Replaceable modules for controlling actuators, single and variable speed fans, heaters, curtains, VFDs, and more
- ▶ Alarm relay for external alarm system
- ▶ Temp. probe (30 ft., extendable to 500 ft.)
- ▶ Software connection for remote control and monitoring
- ▶ **iWire** wireless communication option
- ▶ Limited warranty (2 years)

AutoFlex stock #: **Special Order**

- ▶ 7-inch display
- ▶ Capacity for 14 modules, 8 included; 3 Relay Modules (RM-4), 2 Actuator Modules (ACT-1), 2 Input Modules (IN-4), and 1 Variable DC Module (VDC-4)
- ▶ Durable, rugged enclosure (22 x 15 x 7 in.)

AutoFlex Mini stock #: **Special Order**

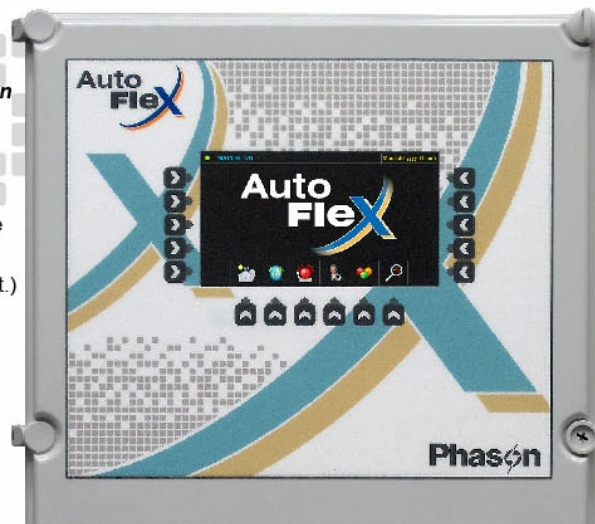
- ▶ 10-inch touchscreen
- ▶ Capacity for 6 modules; 1 Relay Module (RM-4) and 1 Input Module (IN-4) included
- ▶ NEMA 4X enclosure (11.85 x 11.00 x 3.95 in.)

ACT-1 stock #: **Special Order**

IN-4 stock #: **Special Order**

RM-4 stock #: **Special Order**

VDC-4 stock #: **Special Order**



iWire Flex
Stock #: **Special Order**

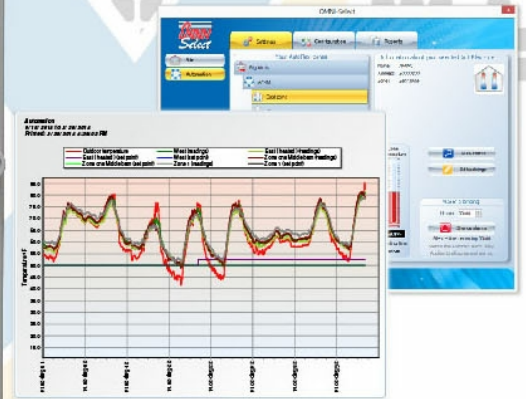
iWire and iWire Flex

...for OMNI Select customers who want to avoid running communication cable between buildings or to remote, hard-to-get-to devices or locations

OMNI Select: Select Automation

Stock #: **Special Order**

- ▶ Control and monitoring of up to 16 zones
- ▶ Secondary control modifiers
- ▶ Easy configuration and adjustment of settings
- ▶ Intuitive charts and reports to help you maximize performance
- ▶ Texting and e-mailing of alarm conditions



- ▶ Quick and easy installation and configuration
- ▶ Outdoor, line-of-sight range of up to 5 miles
- ▶ Indoor range of up to 500 feet
- ▶ Limited warranty (90 days)

iWire stock #: **Special Order**



OMNI Select: Select Ventilation

Stock #: **Special Order**

- ▶ Easy configuration and adjustment of settings
- ▶ Intuitive charts and reports to help you maximize performance
- ▶ Texting and e-mailing of alarm conditions

PBx Power Blocks

...work with the **Select Ventilation** software to control equipment according to your settings

- ▶ Software connection for remote control and monitoring
- ▶ **iWire** wireless communication option
- ▶ Alarm relay for external alarm system
- ▶ NEMA 4X enclosure (9.00 x 7.00 x 3.75 in.)
- ▶ Temperature probe (30 ft., extendable to 500 ft.)
- ▶ Limited warranty (2 years)

PBx-10 stock #: **Special Order**

- ▶ 2 variable cooling stages with overload protection fuses
- ▶ 6 relay stages (heat, cool, duty cycle, curtain, timed event, or actuator control)
- ▶ Socketed, replaceable relays
- ▶ 4 temperature inputs with up to 4-zone averaging

PBx-11 stock #: **6961256**

- ▶ 2 variable cooling stages with overload protection fuses
- ▶ 2 variable 0 to 10 VDC stages that track and follow the same settings as the AC stages
- ▶ 9 relay stages (heat, cool, duty cycle, curtain, timed event, or actuator control)





PEC Plus

Stock #: 696700

- ▶ 2 variable cooling stages with overload protection
- ▶ 6 relay stages (heat, cool, duty cycle, curtain, or actuator control)
- ▶ Socketed, replaceable relays
- ▶ Alarm relay (for external alarm system or siren)
- ▶ 4 temperature inputs with up to 4-zone averaging
- ▶ Configurable 7-step growth curve
- ▶ Full-power-turn-on for minimizing fan ice-up
- ▶ On-board diagnostics and self tests
- ▶ Temperature probe (30 ft., extendable to 500 ft.)
- ▶ NEMA 4X enclosure (9.00 x 7.00 x 3.75 in.)
- ▶ Limited warranty (2 years)



Quality
Durability
Reliability
since 1985



Phason
electronic control systems

FanDRIVES

...a cost-effective way to increase the capacity of your fan control system

- ▶ Variable AC output
- ▶ DC signal input
- ▶ Expandable capacity using additional unit
- ▶ 3-phase system compatibility
- ▶ 4 motor curve options
- ▶ NEMA 4X enclosure (9.00 x 7.00 x 3.75 in.)
- ▶ Limited warranty (2 years)

FD-1-14 stock #: **Special Order**

- ▶ 1x 14 FLA variable AC output

FD-2-7 stock #: **Special Order**

- ▶ 2x 7 FLA variable AC outputs



Manual Speed Control

...simple and effective fan or brooder lamp control

- ▶ Variable AC output with overload protection
- ▶ ON/OFF switch
- ▶ Adjustable HIGH/LOW settings
- ▶ NEMA 4X enclosure (4.75x 6.25 x 3.75 in.)
- ▶ Limited warranty (2 years)

MSC-4 12.5 A stock #: 696392

MSC-4 8.5 A stock #: 696393



Natural Ventilation Control

Stock #: 696769

...automatically controls temperature by operating a curtain machine and heater

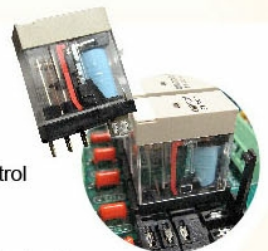
- ▶ Programmable open, close, and idle durations, idle band, hysteresis, and alarms
- ▶ Open, close, and heater relays
- ▶ Alarm relay
- ▶ Manual override mode
- ▶ Optional rain sensor and override
- ▶ Temperature probe (6 ft., extendable to 500 ft.)
- ▶ NEMA 4X enclosure (4.75x 6.25 x 3.75 in.)
- ▶ Limited warranty (2 years)



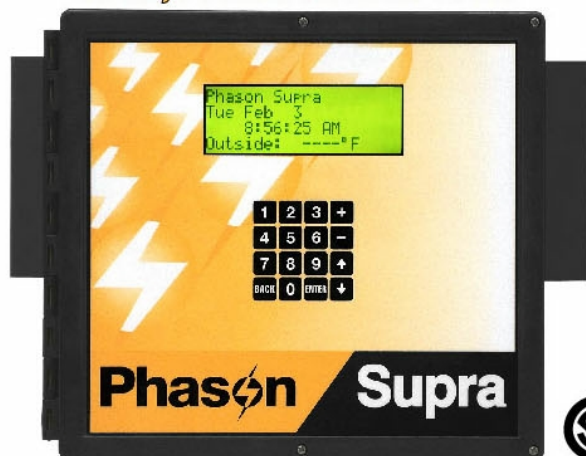
Supra-RS 16-stage control

Stock #: 696088

- ▶ 4 variable stages (heat or cool) with overload protection fuses
- ▶ 12 relay stages (heat, cool, timed event, duty cycle, or actuator control)
- ▶ Variable DC signal output
- ▶ Socketed, replaceable relays
- ▶ Alarm relay (for external alarm system or siren)
- ▶ 4 temperature inputs with 4-zone control and outdoor temperature monitoring ability
- ▶ 2 configurable 7-step growth curves
- ▶ Temperature setback for day/night temperature (DIF) control
- ▶ Water usage monitoring ability
- ▶ Humidity monitoring and control ability
- ▶ Startup timer for distributing backup generator initial startup load
- ▶ Full-power-turn-on for minimizing fan ice-up
- ▶ Data logging
- ▶ On-board diagnostics and self tests
- ▶ Temperature probe (30 ft., extendable to 500 ft.)
- ▶ NEMA 4X enclosure (11.85 x 11.00 x 3.95 in.)
- ▶ Limited warranty (2 years)



NEW, LARGER DISPLAY!





1-800-328-8842

Platinum Plus⁺

The Poultry house controller that breeds better results

Rotem's **Platinum Plus** Controller brings improved profits with less work. How? These state of the art controllers manage everything in the poultry house: Climate, temperature, feed, weighing, and ventilation. Featuring Rotem's **Precision Ventilation**, Platinum produces larger and healthier birds, while saving both energy and feed.

Benefits

- + **Fuel saving** features reduce operating costs.
- + **Large LCD graphic** display enables simplified navigation between menu items.
- + **Precision Ventilation** maintains optimal environmental conditions.
- + **Current Sense Sensors** provide real-time indication of status or malfunctions.
- + **Real-time alarms** inform the grower if anything goes wrong.
- + **Remote control** enables long distance management.
- + **Extensive memory and SD card** enable storing huge volumes of detailed data, log histories, and simple controller upgrades.

Features

- + On-screen help and graphs
- + Large & friendly numeric keypad
- + Up to 80 heavy-duty relays (1 HP)
- + Smart on/off/auto override switches
- + Battery backup option
- + Coordinated digital/analog static pressure control



- + 16 independent heat zones
- + Precision fogger and cool cell cooling systems
- + Failsafe emergency relay
- + SD card and ARM CPU
- + Multi language support

Communicator

The Versatile Remote Communication & Alarm System for Farmers

Rotem's **Communicator** is an alarm and communication center used by poultry famers to monitor and control their Rotem Controllers and accessories. The Communicator enables full control over all events and procedures, locally and remotely.

Features

- + Plug-in:
 - cellular modem supports text messages
 - Ethernet modem enables internet connection
 - voice card supports incoming and outgoing phone calls
- + Local communication via wired or wireless communication
- + Status reports provide critical information on house functions and animal statistics
- + Text messages sent in a variety of languages
- + Test functions to ensure that text and ringtones function as required
- + Eight digital inputs
- + Battery backup

Benefits

- + Alarms and data in real time enable **optimal management** of your controllers, 24/7.
- + Remote controller configuration enables **centralized management** of all farms from one computer.
- + Support for **multiple communication technologies** (telephony, cell phone, DSL, radio, line modem, satellite, text messages, email, voice card, pager or internet) ensure message transmission.
- + **Text messages ringtones** ensure that you don't miss alarm messages.



Take Control[®]

