

1 FEED SYSTEMS

CHORE-TIME Bulk Bins



6', 9', 12', 15' diameter with a 60° hopper, and 7' diameter with a 67° hopper.

The 40° roof allows for more storage.

SPRING-LOCK® Lid provide a positive close open, yet it is easy to open from the ground. When open, the lid slides down along the roof making it less susceptible to wind and getting it out of the way of the auger.

Patented HYDROSHIELD® directs moisture to run-off the sidewalls and not down the hopper panels eliminating water problems in the boot area.

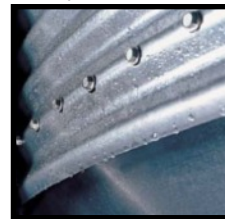
Available with ladder, ACCESS PLUS® Door, and many more options.



ACCESS PLUS® DOOR



STURDY LADDER SYSTEM



HYDROSHIELD®



SPRING-LOCK® LID

Select hopper bin sizes (additional models also available)

Including 40° Roof, SPRING-LOCK® Lid and HYDROSHIELD® Weather Guard

MODEL	CAPACITY 40 LB./CUBIC FT.		HEIGHT TO FILL FEET-INCHES
	TONS	CUBIC FEET	
6-Foot (1.8-Meter) Diameter Bins w/60° Hopper			
6-Ft. 1-Ring	3.1	156.9	11' 6"
6-Ft. 2-Rings	4.6	231.9	14' 2"
6-Ft. 3-Rings	6.1	306.9	16' 10"
6-Ft. 4-Rings	7.6	381.9	19' 6"
7-Foot (2.1-Meter) Diameter Bins w/67° Hopper			
7-Ft. 1-Ring	4.9	245.6	14' 9"
7-Ft. 2-Rings	6.9	347.0	17' 5"
7-Ft. 3-Rings	9.0	448.4	20' 1"
7-Ft. 4-Rings	11.0	549.8	22' 9"
7-Ft. 5-Rings*	13.0	651.2	25' 5"
7-Ft. 6-Rings*	15.1	752.6	28' 1"
9-Foot (2.7-Meter) Diameter Bins w/60° Hopper			
9-Ft. 1-Ring	8.6	427.6	15' 7"
9-Ft. 2-Rings	12.0	597.6	18' 3"
9-Ft. 3-Rings	15.4	767.6	20' 11"
9-Ft. 4-Rings	18.8	937.6	23' 7"
9-Ft. 5-Rings*	22.2	1107.6	26' 3"
9-Ft. 6-Rings*	25.6	1277.6	28' 11"
9-Ft. 7-Rings*	28.9	1442.6	31' 7"

MODEL	CAPACITY 40 LB./CUBIC FT.		HEIGHT TO FILL FEET-INCHES
	TONS	CUBIC FEET	
12-Foot (3.7-Meter) Diameter Bins w/60° Hopper			
12-Ft. 1-Ring	17.8	887.5	19' 5"
12-Ft. 2-Rings	23.7	1186.0	22' 1"
12-Ft. 3-Rings	29.7	1484.4	24' 9"
12-Ft. 4-Rings*	35.7	1782.9	27' 5"
12-Ft. 5-Rings*	41.6	2081.3	30' 1"
12-Ft. 6-Rings*	47.6	2379.9	32' 9"
12-Ft. 7-Rings*	53.6	2678.3	35' 5"
15-Foot (4.6-Meter) Diameter Bins w/60° Hopper			
15-Ft. 2-Rings*	41.5	2076.0	25' 10"
15-Ft. 3-Rings*	50.9	2542.5	28' 6"
15-Ft. 4-Rings*	60.2	3008.6	31' 2"
15-Ft. 5-Rings*	69.5	3474.9	33' 10"
15-Ft. 6-Rings*	78.8	3941.2	36' 6"
15-Ft. 7-Rings*	88.2	4407.5	39' 2"
15-Ft. 8-Rings*	97.5	4873.8	41' 10"

Feed bin models 9-ft. 3-rings and larger feature hopper reinforcement angles and a heavy gauge steel welded collar to help the bin hold its shape over many years of hard use.

*Includes ladder safety cage. Safety cages are included as a standard feature for bin ladders exceeding 20 feet (6 m) in height, conforming with U.S. OSHA standards.

FLEX-AUGER® Feed Delivery Systems and Accessories



STOCK #	MDL	DESCRIPTION	ID	OD
520078...	MDL 108...	TUBE PVC 10'....	3.23"	3.50"
520113...	MDL 108...	FLEX-AUGER.....	2.38"	3.56"
520765...	MDL 90.....	TUBE PVC 10'....	3.23"	3.50"
520767...	MDL 90.....	FLEX-AUGER.....	1.75"	2.71"
520803...	MDL 75.....	TUBE PVC 10'....	2.63"	2.95"
520201...	MDL 75.....	FLEX-AUGER.....	1.44"	2.38"
520740...	MDL 55.....	TUBE PVC 10'....	2.01"	2.20"
520223...	MDL 55.....	FLEX-AUGER.....	.89"	1.52"



Model 55 Stock#: 520528

Model 75 Stock#: 520529

Model 90 Stock#: 520537

Model 108 Stock#: 520122

The Nylon Outlet Drop includes slide shut-off, two clamps and ball/rope for actuating slide.



Upper boot transitions are available in clear or translucent red polycarbonate for easy feed visibility. 30-degree upper boot transitions are also available.

CHORE-TIME®

Highly energy-efficient, extremely long-wearing and trouble-free – that's how FLEX-AUGER® Systems are known around the world.

- Helps optimize feed conversion by keeping feed fresh and reducing waste.
- Choice of conveying rates for a wide variety of feeding applications.
- Fully enclosed system distributes feed accurately and economically.
- Moves feed up, down, on-the-level, or around corners.
- Low power requirements and low maintenance costs.
- System is easily installed in minimal space.
- Designed to be highly energy-efficient, long-wearing and trouble-free.
- 10-year prorated warranty. (See Chore-Time's full written warranty for complete details.)
- Automatic controls and scales are also available.

FLEX-AUGER® System Specifications

Let's grow together.

	Model 75	Model HMC	Model 90 (Standard)	Model 90 (High Speed)	Model 90 (High Speed)	Model 108 (Standard)	Model 108 (High Speed)
Feed Delivery Rate per Minute*	50 pounds (20 kg)	50 pounds (20 kg)	100 pounds (45 kg)	120 pounds (55 kg)	170 pounds (75 kg)	220 pounds (100 kg)	250 pounds (110 kg)
Power Unit RPM	348	348	348	425 (60 Hz only)	584	348	425 (60 Hz only)
Outside Diameter of Tube	3 inches (75 mm)	3.5 inches (90 mm)	3.5 inches (90 mm)	3.5 inches (90 mm)	3.5 inches (90 mm)	Steel - 4.25 inches (108 mm) PVC - 4.5 inches (115 mm)	Steel - 4.25 inches (108 mm) PVC - 4.5 inches (115 mm)
Corner Radius	5 feet (1.5 meters)	5 feet (1.5 meters)	5 feet (1.5 meters)	5 feet (1.5 meters)	5 feet (1.5 meters)	5 feet (1.5 meters)	5 feet (1.5 meters)
Recommended Motor at Maximum Length	1 HP	1 HP	1 HP	1 HP	1.5 HP	1.5 HP	2 HP
Maximum Length	200 feet (60 m)	150 feet (45 m)	150 feet (45 m)	120 feet (35 m)	120 feet (35 m)	150 feet (45 m)	150 feet (45 m)
Standard Extension**	245 feet (75 m)	185 feet (55 m)	185 feet (55 m)	150 feet (45 m)	N/A	185 feet (55 m)	185 feet (55 m)
Typical Applications	Broiler and turkey production or hog grow and finish houses	Dairy cattle feeding or large particle feeds	Broiler, breeder, turkey or layer houses; or large hog buildings	Broiler, breeder, turkey or layer houses; or large hog buildings	Broiler breeder houses only	Broiler, breeder or layer houses; bin filling, grain moving or stationary mills	Broiler or layer houses; bin filling, grain moving or stationary mills

*Feed delivery rate calculated at standard 40 pounds of feed per cubic foot (640 kg per cubic meter).

**Standard extensions use extension boot at motor end of first auger, plus additional tube, auger and motor.

NOTE: Where extra feed storage or dual rations are required, use Chore-Time's straight-through tandem system, or 30-degree two-motor tandem system. Tandem systems are available for Models 75, 90, HMC, and 108. For each straight-through tandem system (Model 75, HMC, 90 and 108), decrease maximum line length for each power unit by 50 feet (15 m). For Model 90 three-bin, straight-through systems, line length should also be decreased by 50 feet (15 m). FLEX-AUGER® Model 55 also available.

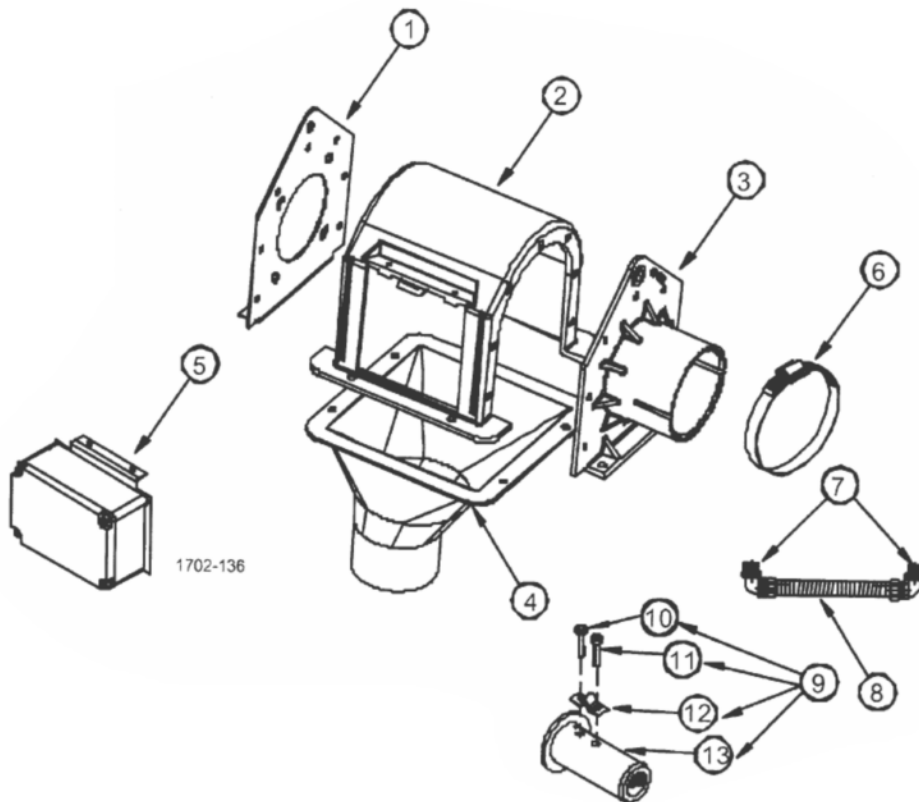
3 FEED SYSTEMS



www.choretimehog.com



www.palsusa.com



MDL #	Description	Stock #
MDL 55	Complete Control Unit with Plastic Switch Box	520731
MDL 75	Complete Control Unit with Plastic Switch Box	520176
MDL 90	Complete Control Unit with Plastic Switch Box	520747

KEY.....DESCRIPTION.....Stock

1	Gearhead End Plate	520257
2	Control Unit Body	520056
3	Tube Anchor Plate, MDL 55	520239
3	Tube Anchor Plate, MDL 75	520046
3	Tube Anchor Plate, MDL 90 & HMC	520013
4	Control Unit Funnel, MDL 55 & 75	520019
4	Control Unit Funnel, MDL 90 & HMC	520025
5	Switch & Plate Assembly	520088
6	H.D. Adjustable Clamp	CT47652-1
7	Water Tight Connector	CT23810
8	Flex Conduit 26982-10	CT26982-10
9	Driver Assembly (MDL 55)	CT46458
9	Driver Assembly (MDL 75 & HMC)	520070
9	Driver Assembly (MDL 90)	520642
10	Screw, SKTH CP 5/16-18X .875	520698
11	Screw, SKTH CP 5/16-18X 2.75	520697
12	Anchor Clamp	520658
13	Driver Weldment (MDL 55)	CT4645
13	Driver Weldment (MDL 75 & HMC)	CT7704
13	Driver Weldment (MDL 90)	CT7706



M-75 Drop Tube, 3" X 12'
Stock #: 520192



M-90 Drop Tube, 3 3/4" X 12'
Stock #: 520585

Y drop
Stock #: 520245

M-108 Drop Tube, 5" X 12'
Stock #: 520831

Drop Tube Pin 304 SS
Stock #: 815555



1-800-328-8842

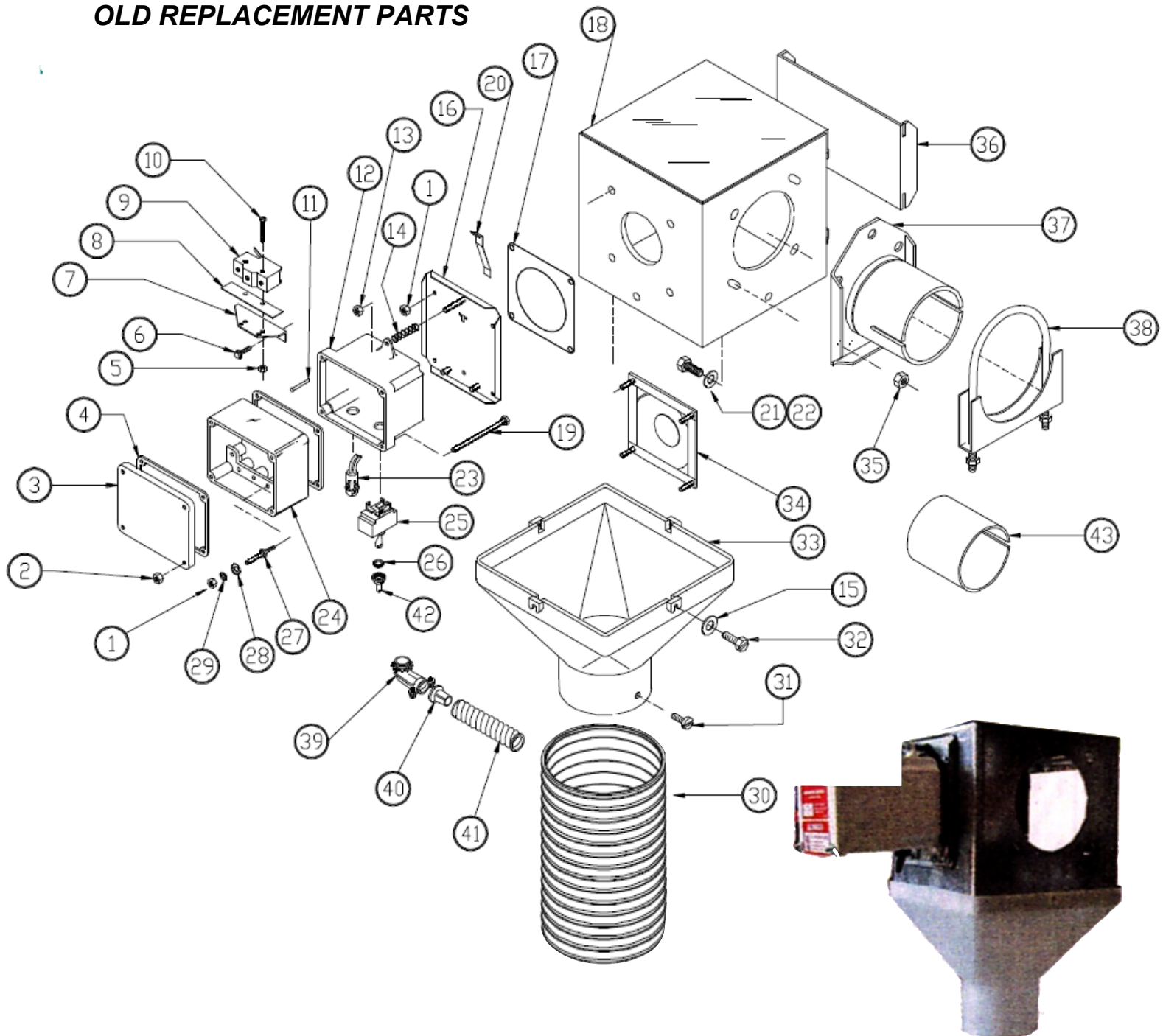
DIRECT DRIVE CONTROL UNITS

(Plastic switch box)

(1-Phase)



OLD REPLACEMENT PARTS



1-800-328-8842

See next page for descriptions & part numbers

5 FEED SYSTEMS

Direct Drive Control Units (plastic switch box)



(1-Phase)

1-800-328-8842

Item	Description	Model 55	Model 75	Model 90	Model HMC	Model 108	Model 125
		6500-13 Part No.	6500-14 Part No.	6500-16 Part No.	6500-15 Part No.	6500-22 Part No.	6500-9 Part No.
1*	10-32 Hex Nut	4297	4297	4297	4297	4297	4297
2*	8-32 Hex Nut	6519	6519	6519	6519	6519	6519
3*	Switch Box Cover	6776	6776	6776	6776	6776	6776
4*	Gasket	6777	6777	6777	6777	6777	6777
5*	#6-32 Hex Nut	771	771	771	771	771	771
6*	#6x3/8 Wash. Hd. Screw	6782	6782	6782	6782	6782	6782
7*	Switch Bracket	7068	7068	7068	7068	7068	7068
8*	Switch Insulation	1907-5	1907-5	1907-5	1907-5	1907-5	1907-5
9*	Switch (SPDT)	7114	7114	7114	7114	7114	7114
10*	#6-32 x 7/8 Rd. Hd. M.S.	1921	1921	1921	1921	1921	1921
11*	Pin	8757	8757	8757	8757	8757	8757
12*	Switch Box	7909	7909	7909	7909	7909	7909
13*	10-32 Hex Lock Nut	6963	6963	6963	6963	6963	6963
14*	Spring	6972	6972	6972	6972	6972	6972
15	Washer	6723	6723	6723	6723	6723	6723
16*	Mounting Plate Assembly	7908	7908	7908	7908	7908	7908
17	Seal	4873	4873	4873	4873	4873	4873
18	Body Weldment	24268	24268	24268	24268	8276	8276
19*	#8-32x2-5/8 Hx. Hd. M.S.	7230-1	7230-1	7230-1	7230-1	7230-1	7230-1
20*	Paddle	7896	7896	7896	7896	7896	7896
21	5/16-18x1/2 Hx. Hd. M.S.	1839	1839	1839	1839	1839	1839
22	Flat Washer	546	546	546	546	546	546
23*	Pilot Light	7044	7044	7044	7044	7044	7044
24*	Terminal Box	7774	7774	7774	7774	7774	7774
25*	Toggle Switch	7767	7767	7767	7767	7767	7767
26*	Shoulder Nut	13407	13407	13407	13407	13407	13407
27*	10-32 Stud	7007	7007	7007	7007	7007	7007
28*	Cup Washer	5775	5775	5775	5775	5775	5775
29*	#10 Star Washer	305	305	305	305	305	305
30	Flex Drop Tube	13267	13267	13267	13267	-----	-----
31	#8x1/2 S.M.S.	6725	6725	6725	6725	6725	6725
32	10-24x5/8 Slot. Hx. Hd. M.S.	1876	1876	1876	1876	1876	1876
33	Drop	6091	6091	6091	6091	13803	13803
34	Diaphragm Assembly	7900	7900	7900	7900	7900	7900
35	5/16-18 Hex Lock Nut	2148	2148	2148	2148	2148	2148
36	Slide	5073	5073	5073	5073	5073	5073
37	Tube Anchor	29515	6518	5069	5069	34543	25341
38	Tube Clamp Kit	7976	6515	6721	6721	14373	14373
39	90 Degree Connector	4228	4228	4228	4228	23810	23810
40	Anti-Short Bushing	6304	6304	6304	6304	----	----
41	3/8" Flex Conduit	26982-10	26982-10	26982-10	26982-10	26982-10	26982-10
42*	Toggle Switch Boot	13406	13406	13406	13406	13406	13406
43	Tube Insert	----	6524	----	----	34337	----
--*	Driver Assembly	----	6862	6861	6862	30313	8103

*Indicates components of the 8789 Switch Assembly.

**The Model 55 Driver Assembly is supplied with the Power Unit. Model 75, 90, & HMC Driver Assemblies are included with the Control Units. For individual driver components, refer to page 33.

Models 55, 75, 90, & HMC only: Items 1 through 43, except items 37, 38, & 43, may be ordered under Chore-Time Part No. 24482.

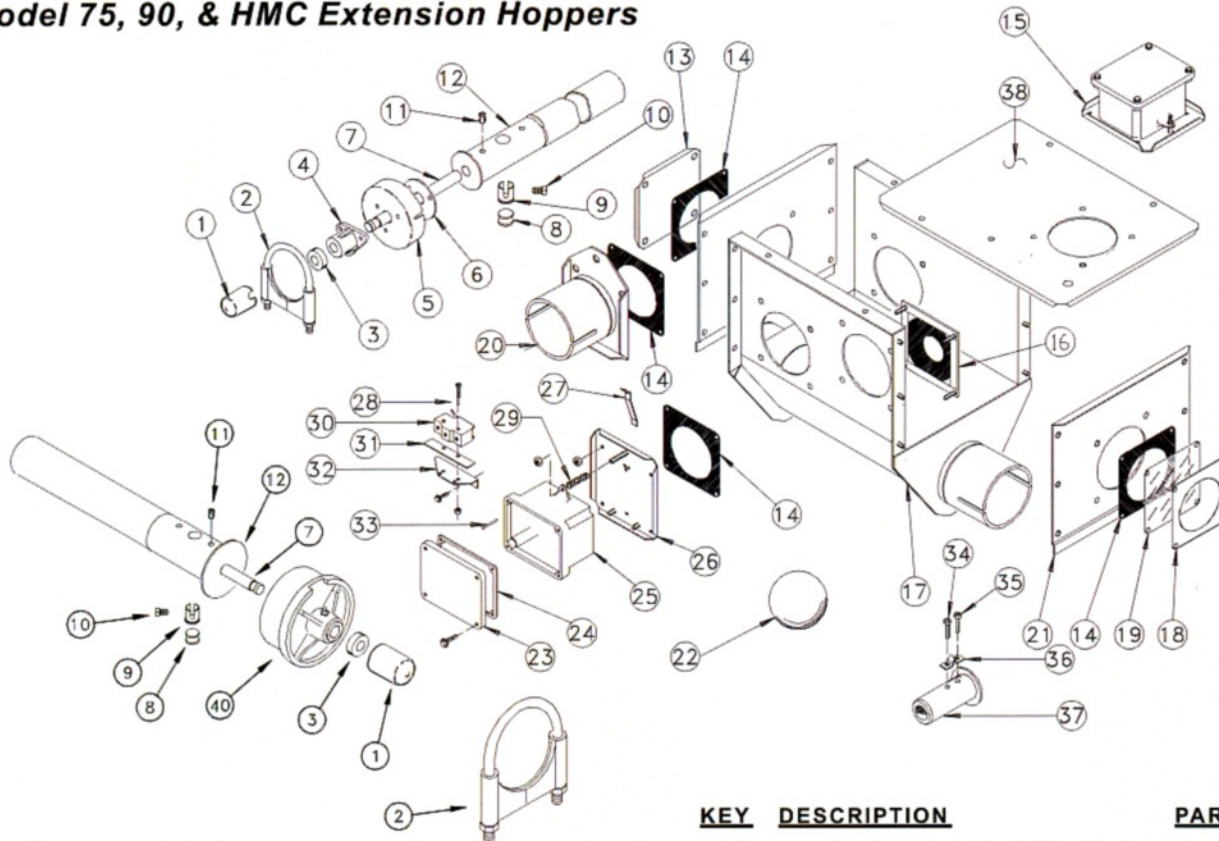
Models 108 & 125 only: Items 1 through 43, except items 37, 38, & 43, may be ordered under Chore-Time Part No. 25688.

Boot Components

Extension Boots and Hoppers

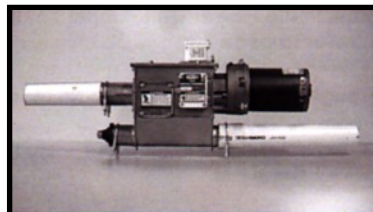
CHORE-TIME

Model 75, 90, & HMC Extension Hoppers



KEY	DESCRIPTION	PART NO.
1*	Safety Cap (Model 75)	29703
	Safety Cap (Model 90, HMC)	29702
2*	Tube Clamp Kit (Model 75)	4141
	Tube Clamp Kit (Model 90, HMC)	6721
3*	5/8" Set Collar	1386
4*	Bearing Assembly	14144
5*	Bearing Cap (Model 75)	6141
6*	Washer (Model 75)	28646
7*	Anchor Shaft (Model 75, HMC)	6839
	Anchor Shaft (Model 90)	6832
8*	Clamp Spacer (Model 90)	5009
9*	Clamp Pin	4702
10*	5/16-18 x 1/2" Set Screw	5095
11*	5/16-18 x 3/8" Set Screw	1174
12*	Anchor Tube Weldment (Model 75, HMC)	6840
	Anchor Tube Weldment (Model 90)	6833
13	Cover Plate (Model 75, 90)	4878
	Cover Plate (Model HMC)	7859
14**	Seal	4873
15	Switch and Plate Assembly	7840
16	Diaphragm Assembly	7900
17	Tandem Boot Body Weldment (Model 75)	7878
	Tandem Boot Body Weldment (Model 90)	28881
	Tandem Boot Body Weldment (Mod HMC)	28931
18	Window Plate	7842
19	Window	7852
20	Tube Anchor Weldment (Model 75)	6518
	Tube Anchor Weldment (Model 90)	5069
	Tube Anchor Weldment (Model HMC)	7862

KEY	DESCRIPTION	PART NO.
21	Access Panel Assembly (Model 75, 90)	7928
	Access Panel Assembly (Model HMC)	7857
22	Cannonball	3531
23**	Switch Box Cover	6776
24**	Gasket	6777
25**	Switch Box	7841
26**	Switch Mounting Plate	7908
27**	Paddle	7896
28**	6-32 x 7/8" Pan Hd. Screw	1921
29**	Compression Spring	6972
30**	SPDT Actuator Switch	7114
31**	Switch Insulation	1907-5
32**	Switch Bracket	7068
33**	1/8 x 1" Rd Hd Rivet	8757
34	5/16-18 X 1/2 Socket Hd Screw	6850-3
35	5/16-18 x 2-1/4 Socket Hd Screw	6850-4
36	Anchor Block	7703
37	Driver Weldment (Model 75, HMC)	7704
	Driver Weldment (Model 90)	7706
38	Cover	7838
40*	Bearing Cap Assembly (Model 90, HMC)	34830



Extension Hopper

40170 = Model 55 Part# 520491
 7944 = Model 75 Part# 520805
 7869 = Model 90 Part# 520060

7 FEED SYSTEMS

Power Units

1-800-328-8842



Part No	HP	RPM	Shaft	Phase	Hz	Voltage	Usage
520365	1/3	348	1/2"	Single	60	230	55, FLAG™
520963	1/2	216	1/2"	Single	60	230	75, 90, HMC, 108
520039	1/2	348	1/2"	Single	60	230	55, FLAG
520510	1/2	348	1/2"	Single	60	230	75, 90, HMC
520827	3/4	216	1/2"	Single	60	230	75, 90, HMC, 108
520068	3/4	348	1/2"	Three	60	230/460	75, 90, HMC, 108
520511	3/4	348	1/2"	Single	60	230	75, 90, HMC, 108
520509	1	348	5/8"	Single	60	230	75, 90, HMC, 108
520052	1	348	5/8"	Three	60	230/460	75, 90, HMC, 108
520490	1 1/2	348	5/8"	Single	60	230	75, 90, HMC, 108

Motors

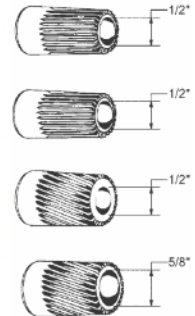


Part No	HP	RPM	Shaft	Phase	Hz	Voltage	Usage
520527	1/3	348	1/2"	Single	60	230	55, FLAG™
520556	1/2	348	1/2"	Single	60	230	75, 90, HMC, 108
520675	1/2	348	1/2"	Three	60	230/460	75, 90, HMC, 108
520726	1/2	348	1/2"	Single	60	230	55, FLAG
520179	3/4	348	1/2"	Single	60	230	75, 90, HMC, 108
520672	3/4	348	1/2"	Three	60	230/460	75, 90, HMC, 108
520518	1	348	5/8"	Single	60	230	75, 90, HMC, 108
520656	1	348	5/8"	Three	60	230/460	75, 90, HMC, 108
520667	1 1/2	348	5/8"	Single	60	230	75, 90, HMC, 108

Pinion Assemblies



Stock #	Description	Shaft	Tooth
520477	Pinion assembly straight	1/2"	18
520684	Pinion assembly straight	1/2"	21
520476	Pinion assembly curved	1/2"	21
520505	Pinion assembly curved	5/8"	21



Gearheads



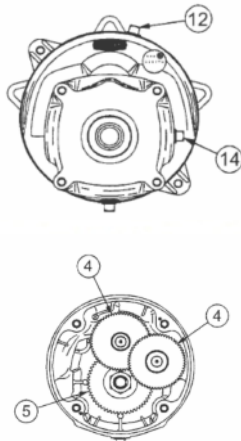
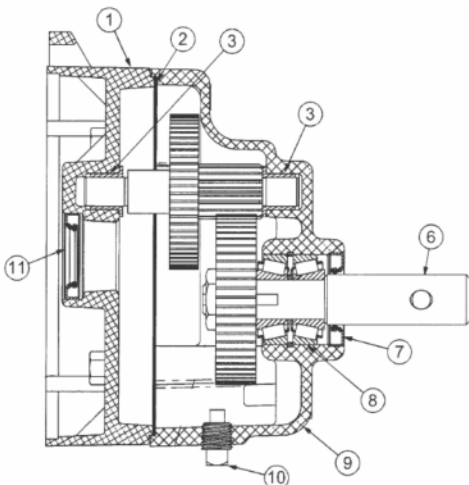
Stock #	Description	RPM	Shaft
520480	Gearhead assembly	216	5/8"
520557	Gearhead assembly	348	5/8"
520816	Gearhead assembly	216	7/8"
520920	Gearhead assembly	348	7/8"



Gearhead Replacement Parts

KEYDESCRIPTIONSTOCK #

1	Adapter (Mach)	520107
2	Gasket	520866
3	Flange bearing	520271
4	Intermediate Gear Assembly 129 RPM	520896
4	Intermediate Gear Assembly 216 RPM	520867
4	Intermediate Gear Assembly 348 RPM	520896
5	Output Gear 129 - 216 RPM	520461
5	Output Gear 129 - 348 RPM	520467
6	Output Shaft	520234
7	Oil Seal	520897
8	Two Row Spacer Bearing	520101
9	Housing (Mach)	520102
10	Oil Seal 129 - 216 RPM	520899
10	Oil Seal 348 RPM	520898
11	Drain Plug	520435
12	Vent Plug	520593



CHORE-TIME

Replacement Parts for Lower Boot Assembly

Complete Lower Boot Assembly

Includes Anchor and Bearing Assembly, Slide and Transfer Kit, Clean Out Cover, and the Upper Boot

Model 55

520677 Single 30°
520554 Twin 30°
520705 Quad 30°

Model 75

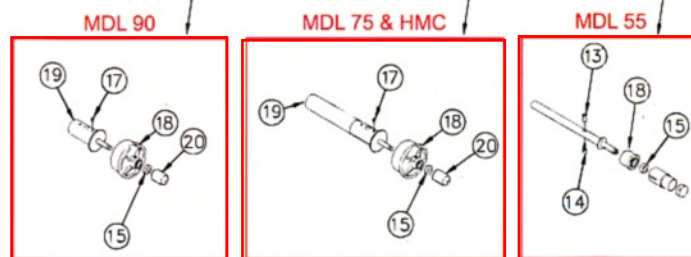
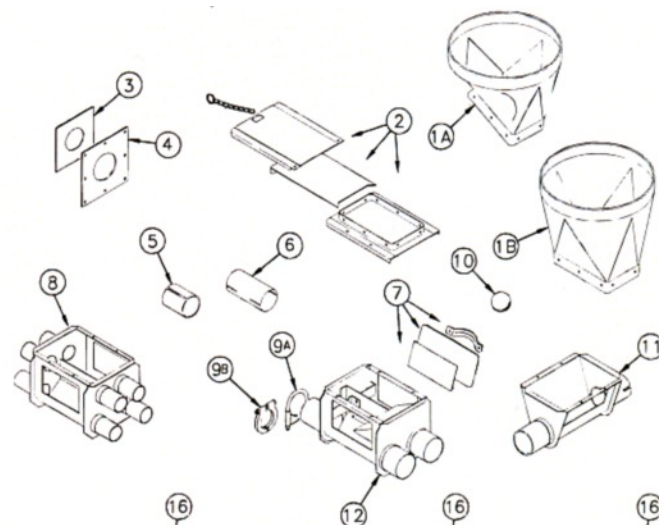
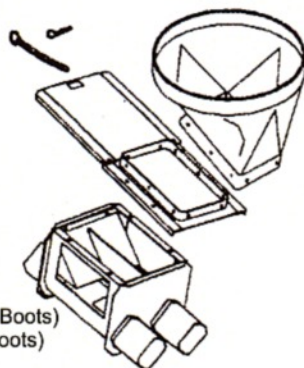
520202 Single 30°
520729 Twin 30°
520202 Single Straight Out
520562 Twin Straight Out
520475 Single Straight Thru Tandem (2 Boots)
520114 Twin Straight Thru Tandem (2 Boots)

Model 90

520419 Single 30°
520719 Twin 30°
520419 Single Straight Out
5201052 Twin Straight Out
520750 Single Straight Thru Tandem (2 Boots)
520487 Twin Straight Thru Tandem (2 Boots)

Model HMC

CT38507 Single 30°
520828 Twin 30°
CT40081 Single Straight Thru Tandem (2 Boots)
520565 Twin Straight Thru Tandem (2 Boots)



1-800-328-8842

Auger Extension

519534 4" Tube & Screw, 5' long
519086 4" Tube & Screw, 10' long
519087 4" Tube & Screw, 15' long
519535 4" Tube & Screw, 20' long
519656 6" Tube & Screw, 5' long
519661 6" Tube & Screw, 10' long

Power Head Kits

519534 4" Auger Powerhead Kit
519536 6" Auger Powerhead Kit

Lower Boot Assembly

519639 4" 30° Boot Assembly
519536 6" 30° Boot Assembly

Universal Parts Kit

519659 4" 30° UPK (Auger Angle Adjustment)
519660 6" 30° UPK (Auger Angle Adjustment)

Rigid Auger System

Model 55 520491
Model 75 520805
Model 90 520066

CHORE-TIME



KEY	DESCRIPTION	STOCK #
1A	30 Degree Upper Boot Clear	520299
1A	30 Degree Upper Boot Red Clear	520254
1B	Straight Out Upper Boot Clear	520330
1B	Straight Out Upper Boot Red Clear	520358
2	Slide and Transfer Plate Kit	520247
3	Neoprene Seal, MDL 55 Only	CT6394
3	Neoprene Seal, MDL 75 Only	520393
3	Neoprene Seal, MDL 90 & HMC	520434
4	Seal Ring, MDL 55 Only	520390
5	Insert Steel to PVC, MDL 75 Only	520196
6	Steel Tube Connector	520210
7	Clean Out Cover Assembly	5206448
8	Quad Boot Weldment, MDL 55 Only	520883
9A	Tube Clamp, MDL 55 Only	CT2952
9B	Tube Clamp, MDL 75 Only	520470
9B	Tube Clamp, MDL 90 & HMC	520749
10	Cannonball MDL 55 Only	CT3621
11	Single Boot Body, MDL 55 Only	520829
11	Single Boot Body, MDL 75 Only	520104
11	Single Boot Body, MDL 75 & HMC	520551
12	Twin Boot Body, MDL 55 Only	520094
12	Twin Boot Body, MDL 75 Only	520473
12	Twin Boot Body Weldment, MDL 90 & HMC	CT36354
13	Auger Clamp, MDL 55 Only	520338
14	Socket Head Screw, MDL 55 Only	520357
15	Set Collar	520267
16	Anchor Bearing Assembly, MDL 55 Only	520967
16	Anchor Bearing Assembly, MDL 75 & HMC	520764
16	Anchor Bearing Assembly, MDL 90 Only (Short)	520167
17	5/16-18 x 3/8" Set Screw, MDL 75, 90 & HMC	520346
18	Bearing Cap, MDL 55	520374
18	Bearing Cap, MDL 75 & HMC	520497
18	Bearing Cap, MDL 90 Only	CT34830
19	Anchor Shaft, MDL 75 & HMC	520770
19	Anchor Shaft, MDL 90 (Short)	520167
20	Safety Cap, MDL 75, 90 & HMC	520218
20	Anchor Shaft, MDL 90 (Short)	520167

9 FEED SYSTEMS



Chore-Time proximity switch with 5' cord, 1 sec-10 min adjustment delay 220 volt **Stock #: 520131**



Chore-Time Chain Disk Metra Prox 20 - 250V 29 .5mm **Stock #: 5201012**



Chore-Time Flag Delay Relay Kit **Stock #: 520225**



Chore-Logic™ Proximity

The SW2 is a reliable electronic feed sensor with a built in changeable microprocessor, which enables the SW2 to stop a motor as feed reaches the sensor, (Delay Off) or to start a motor when there is a lack of feed, (Delay On) **Stock #: 520128**



Chore-Time Micro Switch
Model 75 & 90 Chore-Time micro switch for hopper level control. Newer control box with plastic switch housing. **Stock #: 520457**



Chore-Time Micro Switch
The Chore-Time Micro Switch is for older control boxes with metal switch housing. **Stock #: 520544**



Chore-Time Toggle Switch
4 prong Chore-Time Toggle Switch **Stock #: 520447**



Chore-Time Micro Switch
Micro Switch for hopper level control. **Stock #: 520408**

Sensor Plus



Sensor Plus Drop Tube Switch with Heater

0-60 minute delay adjustment
220 Volt

Stock #520298



Sensor Plus Drop Tube Switch with Heater and Safety Timer

0-60 minute delay adjustment
3-100 minute adj safety timer
220 Volt

Stock #520035

Safety Module: #520260



Mechanical Hopper Level Control

Galvanized Steel
110-220 Volt

Stock # ...520219

HALO JR.

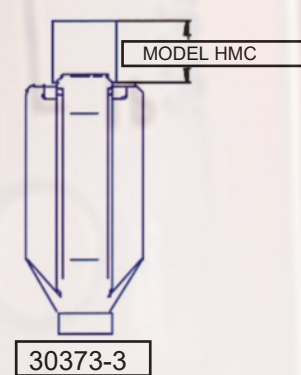
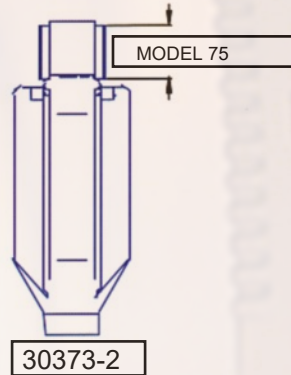
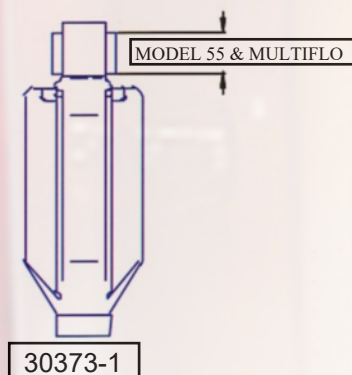
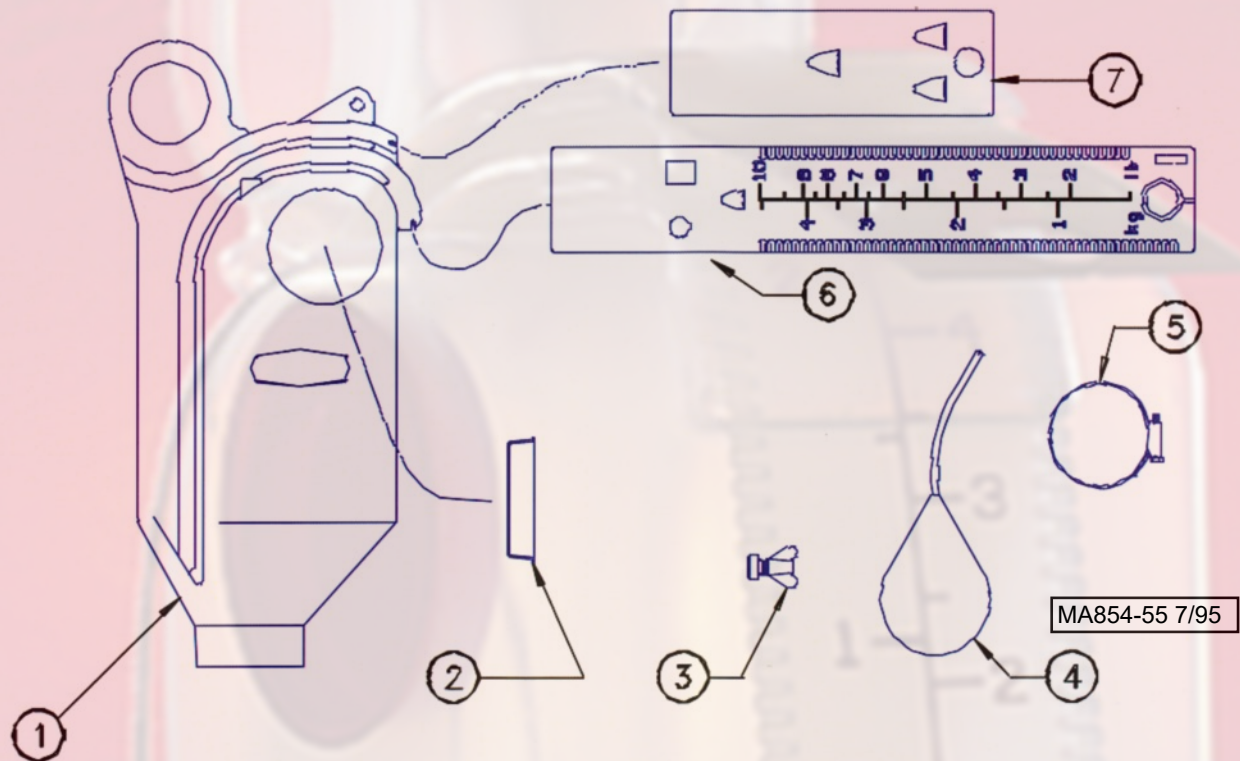


The Halo Jr. Max Feed Sensor has an infrared feed sensor that takes the place of proximity switches, or hopper level switches.

The Halo Jr. Max Feed Sensor has a new custom molded watertight enclosure with a delay start up to 6 hours. The maximum run feature is standard, but can be disabled for continuous feeding. This Halo Jr. Max Feed Sensor has a new smaller size for easier installation, the inlet and outlet is 3 1/2".

Stock #523366

Plastic Drop Feeder Components



Key	Description
1	Drop Feeder
2	Hole Plug
3	Cable Clamp
4	Dump Ball Assembly
5	Hose Clamp
6	Adjustment Slide
7	Shut-off Slide

Model 55/
Multiflo
Part No.

Model 75
Part No.

Model HMC
Part No.

30373-1
9965
13057
6296
8643
33884
26138

30373-2
9965
13057
6296
6183
33884
26138

30373-3
9965
13057
6296
6183
33884
26138

Adjustable Drop Feeder

Stock # MDL#

520737 . . MDL 55
520211 . . MDL 75
520746 . . MDL 90 & HMC

CHORE-TIME®

11 FEED SYSTEMS

FEED DELIVERY CLOSED LOOP FEED SYSTEMS

Designed to be a flexible, energy-efficient tool for accurately distributing feed, Chore-Time's Disc Feed Delivery System is reliable and simple to manage. This closed loop system will gently deliver pellets, mash and custom-mixed rations up to 1,150 feet (350 m) at a rate of up to 50 pounds (20 kg) per minute in complex barn layouts requiring multiple corners. Feed can be delivered at a 45° incline angle up to 13 feet (4 m) high.

CHORE-TIME®



WHOLE-LINK NYLON DISC

- › This Chore-Time conveyor features rugged, nylon carrier discs added through injection-molding to forge a sturdy intra-link structure. Discs will not slide in the link.
- › The system's top quality, surface-hardened steel alloy chain has high tensile strength to resist stretching and breaking.



CORNER WHEEL UNIT

- › Cast iron corner wheel efficiently indexes to the chain and will not wear out or break discs.
- › The wheel's self-cleaning, curved-spoke design keeps feed at the perimeter of the corner unit's housing and prevents feed residue from building up in corners.
- › Rugged nylon-composite housing will not crack and is designed to seal feed in and moisture out.



FEED INTAKE BOOT

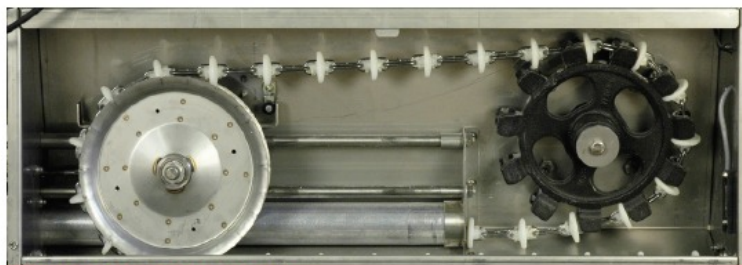
- › Chore-Time's Feed Intake Boot is adjustable to help fine-tune the amount of incoming feed received from a Chore-Time FLEX-AUGER® Fill System.
- › The intake boot is designed as an enclosed boot and receiving hopper unit.

FEED LEVEL SWITCH

- › Chore-Time's CHORE-LOGIC™ Switch is an in-line feed sensor and switch designed to turn off the disc conveying system when feed returns to the inlet boot after all feeders have been filled.
- › This switch is easy to adjust and mounts by attaching the switch holder to the conveyor tube.

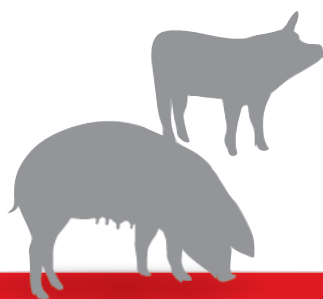
CONTROL PANEL

- › Automatic and manual controls are available for operating the Chore-Time Disc Conveying System.



COMPACT DRIVE UNIT

- › Low-profile stainless steel drive unit easily ceiling-mounts to provide out-of-the-way conveyor lines and features a transparent cover to permit visual checks of the conveyor system's feed flow.
- › Tension safety switch in drive unit continuously monitors conveyor operation to safeguard against chain stretching and breakage.



Chain Disk Feed System



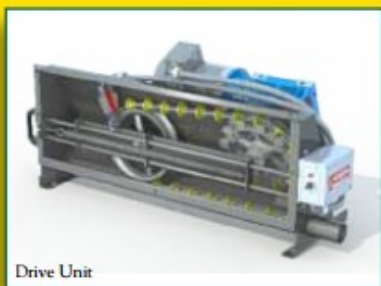
Maximize Production Through Automation.

Automated Feed Delivery System

Meet the needs of today's complex multi-ration feeding programs with the highly adaptable Automated Feed Delivery System from VAL-CO®. Decrease feed particle separation and damage to expensive pelleted feed with a chain and disk feed transporting system.



A look inside the hopper



Drive Unit

Benefits:

- Maximize feed intake with multiple feedings throughout the day
- Eliminate animal stress and the labor of hand feeding
- Improve sow condition and breeding
- Produce healthier, heavier pigs at weaning
- Less animal stress with reduced human interaction
- No feed build-up
- Reduced labor costs
- Low maintenance

Design Features:

- Single chain disk drive with steel tubes can extend up to 1800 ft. effective length while delivering 30 lbs/minute
- Drive unit housing is constructed of 304 stainless steel for years of durable service
- Chain tension is automatically adjusted by a spring loaded tensioning wheel
- Smooth, machined sprocket teeth on drive wheel reduce disk wear
- Chain pitch engineered to ensure longer service life
- Economical PVC tubes can extend up to 1000 ft. effective length and deliver 35 lbs/minute
- Clear PVC feed line tubes allow easy viewing of feed as it is delivered
- Tight radius corners allow the system to turn 180° in a 24" space
- Install corners horizontally or vertically for maximum versatility
- Drop kits designed for easy cleaning
- Shut-offs can be adapted with actuators for automated multi-ration feeding systems
- Volumetric drop feeders available for farrowing and gestation
- Strong, engineering plastic are injection molded around durable, tempered welded chain
- Secure connection chain links



Opened corner unit with chain



VALCO®

Performance You Can Count On

13 FEED SYSTEMS

HOG TESTED. FARMER APPROVED.



WWW.SDIMFG.COM



Craftsmanship

- Built Tough. Built Smart. Built RIGHT.
- Produced only with 304 stainless steel
- Welded for durable, long-lasting use
- Multiple holes and knockouts simplifies installation in various applications
- Rolled hem & folded edges to avoid sharp points and provide superior strength

CERTIFIED 304
STAINLESS STEEL



Many feeder models are available as a knock-down/bolt together kit. View QR code for more details.



DRY NURSERY FEEDER NM SERIES



Features

- Option of EZ Adjustment or Hand Crank Adjustment system
- Proper feed space dimensions designed for hog comfort and accessibility of feed
- *Feed Saving Lip* – saves feed and money

Accessories

- Drop Tube Holders included

Options

- Available in either single or double sided models
- Also available as knock down bolt kit (Ideal for long distance and international shipments)



Dry Nursery Feeder | Traditional 6" X 6" Feed Spaces | Double Sided (20g 304SS, 31" Height)

Part # (EZ-Squeeze)	Part # (Hand Crank)	Trough Spaces	Length		Width		Height		Feed Capacity	
			Inches	CM	Inches	CM	Inches	CM	Pounds	Kg
NM18-203	NM18-203.HC	Double 3	18.25"	46	17"	43	31"	79	91	41
NM24-204	NM24-204.HC	Double 4	24.25"	62	17"	43	31"	79	121	55
NM30-205	NM30-205.HC	Double 5	30.25"	77	17"	43	31"	79	161	68
NM36-206	NM36-206.HC	Double 6	36.25"	92	17"	43	31"	79	181	82
NM42-207	NM42-207.HC	Double 7	42.25"	107	17"	43	31"	79	212	96
NM48-208	NM48-208.HC	Double 8	48.25"	122	17"	43	31"	79	242	110
NM54-209	NM54-209.HC	Double 9	54.25"	138	17"	43	31"	79	272	123
NM60-210	NM60-210.HC	Double 10	60.25"	153	17"	43	31"	79	302	137
NM66-211	NM66-211.HC	Double 11	66.25"	168	17"	43	31"	79	333	151
NM72-212	NM72-212.HC	Double 12	72.25"	184	17"	43	31"	79	363	165

* Approximate Feed Capacity based on feed density of 42 lbs. per cubic foot | ** Custom Sizes Available | *** Feeders also available in single side models

DRY NURSERY MAX FEEDER NMX SERIES



Features

- Option of EZ Adjustment or Hand Crank Adjustment system
- Proper feed space dimensions designed for hog comfort and accessibility of feed
- *Feed Saving Lip* – saves feed and money

Accessories

- Drop Tube Holders included

Options

- Available in either single or double sided models



THE NURSERY MAX FEEDER (NMX SERIES) IS CONSTRUCTED WITH 8" WIDE X 8" DEEP FEED SPACES AND 18 GAUGE WALLS. THIS "JUNIOR" MODEL IS DESIGNED TO ACCOMMODATE THE GROWING TREND OF KEEPING PIGS IN NURSERY TO HEAVIER WEIGHTS.

Dry Nursery Max Feeder | Large 8" x 8" Feed Spaces | Double Sided (18g 304SS, 31" Height)

Part # (EZ-Squeeze)	Part # (Hand Crank)	Trough Spaces	Length		Width		Height		Feed Capacity	
			Inches	CM	Inches	CM	Inches	CM	Pounds	Kg
NMX24-203	NMX24-203.HC	Double 3	24.25"	62	22"	58	31"	79	161	73
NMX32-204	NMX32-204.HC	Double 4	32.25"	82	22"	58	31"	79	215	98
NMX40-205	NMX40-205.HC	Double 5	40.25"	102	22"	58	31"	79	268	122
NMX48-206	NMX48-206.HC	Double 6	48.25"	123	22"	58	31"	79	322	146
NMX56-207	NMX56-207.HC	Double 7	56.25"	143	22"	58	31"	79	376	171
NMX60-208	NMX60-208.HC	Double 8	60.25"	153	22"	58	31"	79	403	183
NMX64-208	NMX64-208.HC	Double 8	64.25"	163	22"	58	31"	79	430	195
NMX72-209	NMX72-209.HC	Double 9	72.25"	184	22"	58	31"	79	483	219
NMX80-210	NMX80-210.HC	Double 10	80.25"	214	22"	58	31"	79	537	244

* Approximate Feed Capacity based on feed density of 42 lbs. per cubic foot | ** Custom Sizes Available | *** Feeders also available in single side models

15 FEED SYSTEMS

WET/DRY NURSERY SHELF FEEDER CSN SERIES

Features

- Option of EZ Adjustment or Hand Crank Adjustment system
- Rugged Edstrom Nipples
- Direct drill-threaded water line: eliminates chance of leaks around the nipple
- Proper feed space dimensions designed for hog comfort and accessibility of feed
- *Feed Saving Lip* – saves feed and money

Accessories

- Drop Tube Holders included

Options

- Available in either single or double sided models
- Also available as knock down bolt kit (Ideal for long distance and international shipments)



Wet/Dry Nursery Shelf Feeder | (18g 304SS, 28" Height)

Part # (EZ-Squeeze)	Part # (Hand Crank)	Trough Spaces	Length		Width		Height		Feed Capacity	
			Inches	CM	Inches	CM	Inches	CM	Pounds	Kg
CSN18-202	CSN18-202.HC	Double 2	18.25*	39	18.25*	46	28*	71	77	35
CSN24-203	CSN24-203.HC	Double 3	24.25*	72	18.25*	46	28*	71	102	46
CSN30-203	CSN30-203.HC	Double 3	30.25*	77	18.25*	46	28*	71	127	58
CSN36-204	CSN36-204.HC	Double 4	36.25*	92	18.25*	46	28*	71	152	69
CSN42-205	CSN42-205.HC	Double 5	42.25*	107	18.25*	46	28*	71	177	80
CSN48-206	CSN48-206.HC	Double 6	48.25*	123	18.25*	46	28*	71	203	92
CSN54-206	CSN54-206.HC	Double 6	54.25*	123	18.25*	46	28*	71	228	103
CSN60-207	CSN60-207.HC	Double 7	60.25*	153	18.25*	46	28*	71	253	115

* Approximate Feed Capacity based on feed density of 42 lbs. per cubic foot | ** Custom Sizes Available | *** Feeders also available in single side model

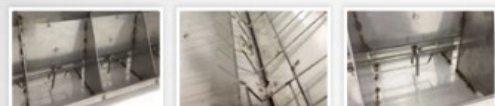
WET/DRY SELECT PADDLE FEEDER SP SERIES

Features

- Option of EZ Adjustment or Hand Crank Adjustment system
- Rugged Edstrom Nipples
- Direct drill-threaded water line: eliminates chance of leaks around the nipple
- Proper feed space dimensions (14" or more) – designed for hog comfort and accessibility of feed
- *Feed Saving Lip* – saves feed and money
- This feeder comes in 36" height

Accessories

- Drop Tube Holders included



Wet/Dry Wean-to-Finish Paddle Feeder | (16g 304SS, 36" Height)

Part # (EZ-Squeeze)	Trough Spaces	Length		Width		Height		Feed Capacity	
		Inches	CM	Inches	CM	Inches	CM	Pounds	Kg
SP28-202	Double 2	28.25*	72	22*	56	36	91	188	85
SP30-202	Double 2	30.25*	77	22*	56	36	91	202	92
SP42-203	Double 3	42.25*	107	22*	56	36	91	282	128
SP48-203	Double 3	48.25*	123	22*	56	36	91	323	147
SP56-204	Double 4	56.25*	143	22*	56	36	91	376	171
SP60-204	Double 4	60.25*	153	22*	56	36	91	403	183
SP70-205	Double 5	70.25*	178	22*	56	36	91	470	213
SP77-205* Odd Divider Spaces	Double 5	77.25*	196	22*	56	36	91	517	235
SP84-206	Double 6	84.25*	214	22*	56	36	91	564	256
SP92-206* Odd Divider Spaces	Double 6	92.25*	234	22*	56	36	91	618	280

* Approximate Feed Capacity based on feed density of 42 lbs. per cubic foot

DRY WEAN-TO-FINISH FEEDER WF SERIES

Features

- Option of EZ Adjustment or Hand Crank Adjustment system
- Proper feed space dimensions (14" or more) – designed for hog comfort and accessibility of feed
- *Feed Saving Lip* – saves feed and money

Accessories

- Drop Tube Holders included

Options

- These feeders are available in either single or double sided models



WITH SOLID PANEL DIVIDERS

- Solid Panel Dividers prevents pigs from seeing each other, which reduces fighting and increases gains
- Also available as knock down bolt kit (ideal for long distance and international shipments)



WITH V-GUARD DIVIDERS

- V-Guard Dividers – can be easily washed with no splash back

WET/DRY WEAN-TO-FINISH SHELF FEEDERS CSW SERIES

Features

- Option of EZ Adjustment or Hand Crank Adjustment system
- Rugged Edstrom Nipples
- Direct drill-threaded water line: eliminates chance of leaks around the nipple
- Proper feed space dimensions (14" or more) – designed for hog comfort and accessibility of feed
- *Feed Saving Lip* – saves feed and money

Accessories

- Drop Tube Holders included

Options

- Available in either single or double sided models
- This feeder is available in Standard 31" height or XT 40" height (this doubles the feed capacity)
- Also available as knock down bolt kit (ideal for long distance and international shipments)



Dry Wean-to-Finish Feeder, with Solid Panel Dividers | Double Sided (18g 304SS, 34" Height)

Part # (EZ-Squeeze)	Part # (Hand Crank)	Trough Spaces	Length		Width		Height		Feed Capacity	
			Inches	CM	Inches	CM	Inches	CM	Pounds	Kg
WF14-221	WF14-221.HC	Double 1	14.25"	36	25"	64	34"	86	129	59
WF28-222	WF28-222.HC	Double 2	28.25"	72	25"	64	34"	86	259	117
WF30-222	WF30-222.HC	Double 2	30.25"	77	25"	64	34"	86	277	126
WF42-223	WF42-223.HC	Double 3	42.25"	107	25"	64	34"	86	388	176
WF50-224	WF50-224.HC	Double 4	60.25"	128	25"	64	34"	86	462	210
WF56-224	WF56-224.HC	Double 4	66.25"	143	25"	64	34"	86	517	235
WF60-224	WF60-224.HC	Double 4	60.25"	163	25"	64	34"	86	554	251
WF70-225	WF70-225.HC	Double 5	70.25"	178	25"	64	34"	86	647	293
WF75-226	WF75-226.HC	Double 6	75.25"	191	25"	64	34"	86	693	314
WF84-226	WF84-226.HC	Double 6	84.25"	214	25"	64	34"	86	776	352

* Approximate Feed Capacity based on feed density of 42 lbs. per cubic foot | ** Custom Sizes Available
*** Feeders also available in single side models

Dry Wean-to-Finish Feeder, with V-Guard Dividers | Double Sided (18g 304SS, 34" Height)

Part # (EZ-Squeeze)	Part # (Hand Crank)	Trough Spaces	Length		Width		Height		Feed Capacity	
			Inches	CM	Inches	CM	Inches	CM	Pounds	Kg
WF28-2V2	WF28-2V2.HC	Double 2	28.25"	72	25"	64	34"	86	259	117
WF30-2V3	WF30-2V3.HC	Double 3	30.25"	77	25"	64	34"	86	277	126
WF42-2V3	WF42-2V3.HC	Double 3	42.25"	107	25"	64	34"	86	388	176
WF50-2V4	WF50-2V4.HC	Double 4	60.25"	128	25"	64	34"	86	462	210
WF50-2V5	WF50-2V5.HC	Double 6	60.25"	128	25"	64	34"	86	462	210
WF56-2V4	WF56-2V4.HC	Double 4	66.25"	143	25"	64	34"	86	517	235
WF56-2V5	WF56-2V5.HC	Double 6	66.25"	143	25"	64	34"	86	517	235
WF60-2V4	WF60-2V4.HC	Double 4	60.25"	163	25"	64	34"	86	554	251
WF60-2V5	WF60-2V5.HC	Double 6	60.25"	163	25"	64	34"	86	554	251
WF60-2V6	WF60-2V6.HC	Double 6	60.25"	163	25"	64	34"	86	554	251
WF70-2V5	WF70-2V5.HC	Double 6	70.25"	178	25"	64	34"	86	647	293
WF70-2V7	WF70-2V7.HC	Double 7	70.25"	178	25"	64	34"	86	647	293
WF75-2V6	WF75-2V6.HC	Double 6	75.25"	191	25"	64	34"	86	693	314

* Approximate Feed Capacity based on feed density of 42 lbs. per cubic foot | ** Custom Sizes Available
*** Feeders also available in single side models

(855) 306.6394 | sdimg.com



Wet/Dry Wean-to-Finish Shelf Feeder | (16g 304SS)

Traditional 31" Height

Part # (EZ-Squeeze)	Part # (Hand Crank)	Trough Spaces	Length		Width		Height		Feed Capacity	
			Inches	CM	Inches	CM	Inches	CM	Pounds	Kg
CSW15-201	CSW15-201.HC	Double 1	16.25"	39	22"	56	31"	79	82	37
CSW28-202	CSW28-202.HC	Double 2	28.25"	72	22"	56	31"	79	163	69
CSW30-202	CSW30-202.HC	Double 2	30.25"	77	22"	56	31"	79	164	74
CSW36-203	CSW36-203.HC	Double 3	36.25"	92	22"	56	31"	79	197	89
CSW42-203	CSW42-203.HC	Double 3	42.25"	107	22"	56	31"	79	229	104
CSW48-203	CSW48-203.HC	Double 3	48.25"	123	22"	56	31"	79	262	119
CSW56-204	CSW56-204.HC	Double 4	60.25"	143	22"	56	31"	79	306	139
CSW60-204	CSW60-204.HC	Double 4	60.25"	163	22"	56	31"	79	328	149
CSW72-205	CSW72-205.HC	Double 5	72.25"	184	22"	56	31"	79	393	178
CSW84-206	CSW84-206.HC	Double 6	84.25"	214	22"	56	31"	79	459	208

Extra Tall 40" Height

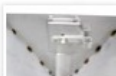
Part # (EZ-Squeeze)	Part # (Hand Crank)	Trough Spaces	Length		Width		Height		Feed Capacity	
			Inches	CM	Inches	CM	Inches	CM	Pounds	Kg
CSW15XT-201	CSW15XT-201.HC	Double 1	16.25"	39	22"	56	40"	102	168	72
CSW28XT-202	CSW28XT-202.HC	Double 2	28.25"	72	22"	56	40"	102	294	133
CSW30XT-202	CSW30XT-202.HC	Double 2	30.25"	77	22"	56	40"	102	316	143
CSW36XT-203	CSW36XT-203.HC	Double 3	36.25"	92	22"	56	40"	102	378	171
CSW42XT-203	CSW42XT-203.HC	Double 3	42.25"	107	22"	56	40"	102	441	200
CSW48XT-203	CSW48XT-203.HC	Double 3	48.25"	123	22"	56	40"	102	504	229
CSW56XT-204	CSW56XT-204.HC	Double 4	66.25"	143	22"	56	40"	102	588	267
CSW60XT-204	CSW60XT-204.HC	Double 4	60.25"	163	22"	56	40"	102	630	286
CSW72XT-205	CSW72XT-205.HC	Double 5	72.25"	184	22"	56	40"	102	766	343
CSW84XT-206	CSW84XT-206.HC	Double 6	84.25"	214	22"	56	40"	102	882	400

* Approximate Feed Capacity based on feed density of 42 lbs. per cubic foot | ** Custom Sizes Available
*** Feeders also available in single side models

(855) 306.6394 | sdimg.com



HOG TESTED. FARMER APPROVED.



CERTIFIED 304
STAINLESS STEEL

17 FEED SYSTEMS

DRY WEAN-TO-FINISH MAX FEEDER MAX SERIES

Features

- Option of EZ Adjustment or Hand Crank Adjustment system
- Solid Panel Dividers or V-Guard Dividers – either option available
- Proper Feed Space Dimensions (14" or more) – designed for hog comfort and accessibility of feed
- Feed Saving Lip – saves feed and money
- Accessories: Drop Tube Holders Included
- Available in either single or double sided models



WITH SOLID PANEL DIVIDERS



WITH V-GUARD DIVIDERS



CERTIFIED 304
STAINLESS STEEL



CERTIFIED 304
STAINLESS STEEL

12" EXTRA DEEP TROUGH SPACE

The Wean-to-Finish MAX feeder is especially designed to provide adequate eating space for hogs being finished at 300+ lbs., a growing trend in the current market!

Dry Wean-to-Finish MAX Feeder, with Solid Panel Dividers | Double Sided (18g 304SS, 34" Height)

Part # (EZ-Squeeze)	Part # (Hand Crank)	Trough Spaces	Length		Width		Height		Feed Capacity	
			Inches	CM	Inches	CM	Inches	CM	Pounds	Kg
MX14-221	MX14-221.HC	Double 1	14.25"	36	30"	76	34"	86	129	59
MX28-222	MX28-222.HC	Double 2	28.25"	72	30"	76	34"	86	259	117
MX30-222	MX30-222.HC	Double 2	30.25"	77	30"	76	34"	86	277	126
MX42-223	MX42-223.HC	Double 3	42.25"	107	30"	76	34"	86	388	176
MX50-224	MX50-224.HC	Double 4	50.25"	128	30"	76	34"	86	462	210
MX56-224	MX56-224.HC	Double 4	56.25"	143	30"	76	34"	86	517	235
MX60-224	MX60-224.HC	Double 4	60.25"	153	30"	76	34"	86	554	251
MX70-225	MX70-225.HC	Double 5	70.25"	178	30"	76	34"	86	647	293
MX75-226	MX75-226.HC	Double 6	75.25"	191	30"	76	34"	86	693	314
MX84-226	MX84-226.HC	Double 6	84.25"	214	30"	76	34"	86	776	352
MX90-226	MX90-226.HC	Double 6	90.25"	229	30"	76	34"	86	832	377

* Approximate Feed Capacity based on feed density of 42 lbs. per cubic foot | ** Custom Sizes Available

*** Feeders also available in single side models

Dry Wean-to-Finish MAX Feeder, with V-Guard Dividers | Double Sided (18g 304SS, 34" Height)

Part # (EZ-Squeeze)	Part # (Hand Crank)	Trough Spaces	Length		Width		Height		Feed Capacity	
			Inches	CM	Inches	CM	Inches	CM	Pounds	Kg
MX28-2V2	MX28-2V2.HC	Double 2	28.25"	72	30"	76	34"	86	259	117
MX30-2V2	MX30-2V2.HC	Double 2	30.25"	77	30"	76	34"	86	277	126
MX42-2V3	MX42-2V3.HC	Double 3	42.25"	107	30"	76	34"	86	388	176
MX50-2V4	MX50-2V4.HC	Double 4	50.25"	128	30"	76	34"	86	462	210
MX56-2V4	MX56-2V4.HC	Double 4	56.25"	143	30"	76	34"	86	517	235
MX60-2V4	MX60-2V4.HC	Double 4	60.25"	153	30"	76	34"	86	554	251
MX70-2V5	MX70-2V5.HC	Double 5	70.25"	178	30"	76	34"	86	647	293
MX75-2V6	MX75-2V6.HC	Double 6	75.25"	191	30"	76	34"	86	693	314
MX84-2V6	MX84-2V6.HC	Double 6	84.25"	214	30"	76	34"	86	776	352
MX90-2V6	MX90-2V6.HC	Double 6	90.25"	229	30"	76	34"	86	832	377

* Approximate Feed Capacity based on feed density of 42 lbs. per cubic foot | ** Custom Sizes Available

*** Feeders also available in single side models

DRY WEAN-TO-FINISH TALL MAX FEEDER MXT SERIES

Features

- Solid Panel Dividers (WF Series) prevents pigs from seeing each other, which reduces fighting and increases gains
- Option of EZ Adjustment or Hand Crank Adjustment system
- Proper feed space dimensions (14" or more) – designed for hog comfort and accessibility of feed
- Feed Saving Lip – saves feed and money

Accessories

- Drop Tube Holders included

Options

- Available in either single or double sided models



CERTIFIED 304
STAINLESS STEEL



Available in other sizes and gauges.



Dry Wean-to-Finish TALL MAX Feeder, with Solid Panel Dividers | Double Sided (18g 304SS, 40" Height)

Part # (EZ-Squeeze)	Part # (Hand Crank)	Trough Spaces	Length		Width		Height		Feed Capacity	
			Inches	CM	Inches	CM	Inches	CM	Pounds	Kg
MXT14-221	MXT14-221.HC	Double 1	14.25"	36	30"	76	40"	102	182	83
MXT28-222	MXT28-222.HC	Double 2	28.25"	72	30"	76	40"	102	365	166
MXT30-222	MXT30-222.HC	Double 2	30.25"	77	30"	76	40"	102	390	177
MXT42-223	MXT42-223.HC	Double 3	42.25"	107	30"	76	40"	102	547	248
MXT50-224	MXT50-224.HC	Double 4	50.25"	128	30"	76	40"	102	651	295
MXT56-224	MXT56-224.HC	Double 4	56.25"	143	30"	76	40"	102	729	331
MXT60-224	MXT60-224.HC	Double 4	60.25"	153	30"	76	40"	102	781	354
MXT70-225	MXT70-225.HC	Double 5	70.25"	178	30"	76	40"	102	911	413
MXT75-226	MXT75-226.HC	Double 6	75.25"	191	30"	76	40"	102	977	443
MXT84-226	MXT84-226.HC	Double 6	84.25"	214	30"	76	40"	102	1094	496
MXT90-226	MXT90-226.HC	Double 6	90.25"	229	30"	76	40"	102	1172	532

* Approximate Feed Capacity based on feed density of 42 lbs. per cubic foot | ** Custom Sizes Available

*** Feeders also available in single side models

Dry Wean-to-Finish TALL MAX Feeder, with V-Guard Dividers | Double Sided (18g 304SS, 40" Height)

Part # (EZ-Squeeze)	Part # (Hand Crank)	Trough Spaces	Length		Width		Height		Feed Capacity	
			Inches	CM	Inches	CM	Inches	CM	Pounds	Kg
MXT28-2V2	MXT28-2V2.HC	Double 2	28.25"	72	30"	76	40"	102	365	166
MXT30-2V2	MXT30-2V2.HC	Double 2	30.25"	77	30"	76	40"	102	390	177
MXT42-2V3	MXT42-2V3.HC	Double 3	42.25"	107	30"	76	40"	102	547	248
MXT50-2V4	MXT50-2V4.HC	Double 4	50.25"	128	30"	76	40"	102	651	295
MXT56-2V4	MXT56-2V4.HC	Double 4	56.25"	143	30"	76	40"	102	729	331
MXT60-2V4	MXT60-2V4.HC	Double 4	60.25"	153	30"	76	40"	102	781	354
MXT70-2V5	MXT70-2V5.HC	Double 5	70.25"	178	30"	76	40"	102	911	413
MXT75-2V6	MXT75-2V6.HC	Double 6	75.25"	191	30"	76	40"	102	977	443
MXT84-2V6	MXT84-2V6.HC	Double 6	84.25"	214	30"	76	40"	102	1094	496
MXT90-2V6	MXT90-2V6.HC	Double 6	90.25"	229	30"	76	40"	102	1172	532

* Approximate Feed Capacity based on feed density of 42 lbs. per cubic foot | ** Custom Sizes Available

*** Feeders also available in single side models

WET/DRY FINISH SHELF FEEDERS CSF SERIES

Features

- Option of EZ Adjustment or Hand Crank Adjustment system
- Rugged Edstrom Nipples
- Direct drill-threaded water line: eliminates chance of leaks around the nipple
- Proper feed space dimensions (14" or more) – designed for hog comfort and accessibility of feed
- *Feed Saving Lip* – saves feed and money

Accessories

- Drop Tube Holders included

Options

- Available in either single or double sided models
- This feeder is available in Standard 31" height or XT 40" height (this doubles the feed capacity)
- Also available as knock down bolt kit (ideal for long distance and international shipments)



CERTIFIED 304
STAINLESS STEEL

Wet/Dry Finish Shelf Feeder (16g 304SS)

Traditional 31" Height

Part # (EZ-Squeeze)	Part # (Hand Crank)	Trough Spaces	Length		Width		Height		Feed Capacity	
			Inches	CM	Inches	CM	Inches	CM	Pounds	Kg
CSF15-201	CSF15-201.HC	Double 1	16.25"	39	22"	56	31"	79	82	37
CSF28-202	CSF28-202.HC	Double 2	28.25"	72	22"	56	31"	79	163	69
CSF30-202	CSF30-202.HC	Double 2	30.25"	77	22"	56	31"	79	164	74
CSF36-203	CSF36-203.HC	Double 3	36.25"	92	22"	56	31"	79	197	89
CSF42-203	CSF42-203.HC	Double 3	42.25"	107	22"	56	31"	79	229	104
CSF48-203	CSF48-203.HC	Double 3	48.25"	123	22"	56	31"	79	262	119
CSF56-204	CSF56-204.HC	Double 4	60.25"	143	22"	56	31"	79	306	139
CSF60-204	CSF60-204.HC	Double 4	60.25"	153	22"	56	31"	79	328	149
CSF72-205	CSF72-205.HC	Double 5	72.25"	184	22"	56	31"	79	393	178
CSF84-206	CSF84-206.HC	Double 6	84.25"	214	22"	56	31"	79	459	208

Extra Tall 40" Height

CSF15XT-201	CSF15XT-201.HC	Double 1	16.25"	39	22"	56	40"	102	168	72
CSF28XT-202	CSF28XT-202.HC	Double 2	28.25"	72	22"	56	40"	102	294	133
CSF30XT-202	CSF30XT-202.HC	Double 2	30.25"	77	22"	56	40"	102	315	143
CSF36XT-203	CSF36XT-203.HC	Double 3	36.25"	92	22"	56	40"	102	378	171
CSF42XT-203	CSF42XT-203.HC	Double 3	42.25"	107	22"	56	40"	102	441	200
CSF48XT-203	CSF48XT-203.HC	Double 3	48.25"	123	22"	56	40"	102	604	229
CSF56XT-204	CSF56XT-204.HC	Double 4	60.25"	143	22"	56	40"	102	688	267
CSF60XT-204	CSF60XT-204.HC	Double 4	60.25"	153	22"	56	40"	102	630	286
CSF72XT-205	CSF72XT-205.HC	Double 5	72.25"	184	22"	56	40"	102	766	343
CSF84XT-206	CSF84XT-206.HC	Double 6	84.25"	214	22"	56	40"	102	882	400

* Approximate Feed Capacity based on feed density of 42 lbs. per cubic foot | ** Custom Sizes Available
*** Feeders also available in single side models

DRY FINISH FEEDER FM SERIES

Features

- Option of EZ Adjustment or Hand Crank Adjustment system
- Traditional feed space dimensions of 10" width
- *Feed Saving Lip* – saves feed and money

Accessories

- Drop Tube Holders included

Options

- These feeders are available in either single or double sided models



CERTIFIED 304
STAINLESS STEEL

Dry Finish Feeders, with Straight Rod Dividers | Traditional 10" Feed Space Width | Double Sided (18g 304SS, 34" Height)

Part # (EZ-Squeeze)	Part # (Hand Crank)	Trough Spaces	Length		Width		Height		Feed Capacity	
			Inches	CM	Inches	CM	Inches	CM	Pounds	Kg
FM20-202	FM20-202.HC	Double 2	20.25"	51	25"	64	34"	86	185	84
FM30-203	FM30-203.HC	Double 3	30.25"	77	25"	64	34"	86	277	126
FM40-204	FM40-204.HC	Double 4	40.25"	102	25"	64	34"	86	370	168
FM50-205	FM50-205.HC	Double 5	60.25"	128	25"	64	34"	86	462	210
FM60-206	FM60-206.HC	Double 6	60.25"	153	25"	64	34"	86	554	251
FM70-207	FM70-207.HC	Double 7	70.25"	178	25"	64	34"	86	647	293
FM80-208	FM80-208.HC	Double 8	80.25"	204	25"	64	34"	86	739	335

* Approximate Feed Capacity based on feed density of 42 lbs. per cubic foot | ** Custom Sizes Available | *** Feeders also available in single side models



HOG TESTED. FARMER APPROVED.

19 FEED SYSTEMS

SOW FEEDERS SF SERIES

Available in other models. Contact your local dealer for more information.



Options

- Sow feeders available in over 50 standard models
- Custom designs available
- These feeders can be adapted to fit almost any crate or head gate

Model Number

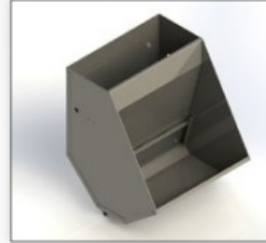
The "14" or "16" at the end of the part number indicates 14" or 16" feeder width



SF-0SM.14
Sow Feed Bowl, small



SF-010.14
Sow Feed Bowl, XL



SF-014.16
Sow Feeder, with feed hopper & spring loaded shutter



SF-017.14
Sow Feeder, with rolled edges



SF-015

- Heavy Duty 16 gauge, 304 stainless steel
- Sloped Bottom - bringing the feed to the front

Put Your Scoop and Feed Cart Away!

There is a Better Solution! One that provides better feed consistency, while still keeping the lactation feed intake high. Low-cost, low-maintenance - Saves your staff more time and labor that can be used to save more pigs! You will also see feed wastage and spoilage eliminated. Use SDI's sow feeder with a feed tube that is easily adjusted and set.

- SF-015.14R** - Ad Lib Sow Feeder - 14" width, with adjustable feed tube (Right Hand)
- SF-015.14L** - Ad Lib Sow Feeder - 14" width, with adjustable feed tube (Left Hand)
- SF-015.16R** - Ad Lib Sow Feeder - 16" width, with adjustable feed tube (Right Hand)
- SF-015.16L** - Ad Lib Sow Feeder - 16" width, with adjustable feed tube (Left Hand)
- SF-015-ADAPTERKIT** - Parts Kit to retro existing sow feeders with ad lib adjustable feed tube assembly

DRY BOAR FEEDER BF SERIES (COMMONLY USED IN GILT DEVELOPERS)

Features

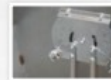
- Solid Panel Dividers prevents pigs from seeing each other, which reduces fighting and increases gains
- Option of EZ Adjustment or Hand Crank Adjustment system
- Proper feed space dimensions (14" or more) - designed for hog comfort and accessibility of feed
- *Feed Saving Lip* - saves feed and money

Accessories

- Drop Tube Holders included

Options

- Available in either single or double sided models



CERTIFIED 304
STAINLESS STEEL

Dry Boar Feeder (16g 304SS, 40" Height)										
Single Sided (16g 304SS, 40" Height)										
Part # (EZ-Squeeze)	Part # (Hand Crank)	Trough Spaces	Length		Width		Height		Feed Capacity	
			Inches	CM	Inches	CM	Inches	CM	Pounds	Kg
BF12-121	BF12-121.HC	Single 1	12.25"	31	18"	46	40"	102	111	50
BF14-121	BF14-121.HC	Single1	14.25"	36	18"	46	40"	102	129	59
BF16-121	BF16-121.HC	Single 1	16.25"	41	18"	46	40"	102	148	67
BF18-121	BF18-121.HC	Single 1	18.25"	46	18"	46	40"	102	166	75
BF30-122	BF30-122.HC	Single 2	30.25"	77	18"	46	40"	102	277	126
BF32-122	BF32-122.HC	Single 2	32.25"	82	18"	46	40"	102	296	134
BF48-123	BF48-123.HC	Single 3	48.25"	123	18"	46	40"	102	444	201
BF60-124	BF60-124.HC	Single 4	60.25"	153	18"	46	40"	102	554	251
Double Sided (16g 304SS, 40" Height)										
BF12-221	BF12-221.HC	Double 1	12.25"	31	30"	76	40"	102	156	71
BF14-221	BF14-221.HC	Double 1	14.25"	36	30"	76	40"	102	182	83
BF16-221	BF16-221.HC	Double 1	16.25"	41	30"	76	40"	102	208	94
BF18-221	BF18-221.HC	Double 1	18.25"	46	30"	76	40"	102	234	106
BF30-222	BF30-222.HC	Double 2	30.25"	77	30"	76	40"	102	390	177
BF32-222	BF32-222.HC	Double 2	32.25"	82	30"	76	40"	102	417	189
BF48-223	BF48-223.HC	Double 3	48.25"	123	30"	76	40"	102	625	284
BF60-224	BF60-224.HC	Double 4	60.25"	153	30"	76	40"	102	781	354

* Approximate Feed Capacity based on feed density of 42 lbs. per cubic foot | ** Custom Sizes Available | *** Feeders also available in single side models

CHORE-TIME®

www.choretimehog.com

Stock # MDL Dim (L x W x H)Capacity

815902	..ND-318.25" X 17.4" X 25"	80 lbs
815858	..ND-424.25" X 17.4" X 25"	107 lbs
815860	..ND-530.25" X 17.4" X 25"	133 lbs
815862	..ND-636.25" X 17.4" X 25"	160 lbs
815864	..ND-742.25" X 17.4" X 25"	187 lbs
815892	..ND-848.25" X 17.4" X 25"	214 lbs
ST33496	..NS-318.25" X 11.7" X 25"	63 lbs
815857	..NS-424.25" X 11.7" X 25"	84 lbs
815859	..NS-530.25" X 11.7" X 25"	105 lbs
815861	..NS-636.25" X 11.7" X 25"	125 lbs
815863	..NS-742.25" X 11.7" X 25"	146 lbs
815903	..NS-848.25" X 11.7" X 25"	167 lbs



Nursery Feeders



Finish Feeders

Stock # MDL Dim (L x W x H)Capacity

815875	..FD-330.25" X 25" X 34"	262 lbs
815877	..FD-440.25" X 25" X 34"	349 lbs
815879	..FD-550.25" X 25" X 34"	437 lbs
815881	..FD-660.25" X 25" X 34"	524 lbs
815883	..FD-770.25" X 25" X 34"	611 lbs
815874	..FS-330.25" X 16" X 34"	170 lbs
815876	..FS-440.25" X 16" X 34"	226 lbs
815878	..FS-550.25" X 16" X 34"	283 lbs
815880	..FS-660.25" X 16" X 34"	340 lbs
815882	..FS-770.25" X 16" X 34"	396 lbs

**Contact PALS for
your Feed Additives**

1-800-328-8842

Stock # MDL Dim (L x W x H)Capacity

ST32738-18WFTDH-2	28.25" X 25" X 34"	244 lbs
815552WFTDH-3	..42.25" X 25" X 34"	367 lbs
815819WFTDH-4	..56.25" X 25" X 34"	489 lbs
815924WFTDH-5	..70.25" X 25" X 34"	611 lbs
815556WFTSH-1	..14.25" X 16" X 34"	68 lbs
815554WFTSH-2	..28.25" X 16" X 34"	159 lbs
815553WFTSH-3	..42.25" X 16" X 34"	238 lbs
ST32524-18WFTSH-4	56.25" X 16" X 34"	317 lbs
ST32470-18WFTSH-5	70.25" X 16" X 34"	369 lbs



Wean-to-Finish Feeders



AQUA TUBE® Feeders

Product Features and Advantages

- Hogs get fresh feed several times each day.
- Ideal for center-pen or fenceline feeding configurations.
- Top quality welded Type 304 stainless steel construction.
- Feed saver lip on feed trough helps prevent feed waste.
- Optional 100-pound capacity plastic feed hoppers.
- PVC feed tube with feed agitation spinner.
- Self-cleaning recessed water cup with nipple drinkers.

Type	MDL	Stock #	Length	Hogs/Feeder
Wean-MarketAT1C1X24ST65009	..2425
Wean-MarketAT2C2X488151484850
Wean-MarketATH2C2X48ST65515	..4850
Wean-MarketAT2C3X608151476060
Wean-MarketATH2C3X60ST65502	..6060
Wean-MarketAT2C3X72ST65008	..7270
Wean-MarketAT3C3X84ST65007	..8484
Wean-MarketAT3C4X848151598484
Wean-MarketAT3C4X96ST65005	..9690
Wean-MarketAT4C5X120St65044	...120120

21 FEED SYSTEMS



ORIGINAL WET/DRY FEEDER

Feeder-to-Finish (F1) or Wean-to-Finish (F2 & WF9)

Proven to be the industry's most profitable feeder.

Feeds 12-16 pigs per feed space.

Pigs can eat dry feed from the shelf or mix feed/water in the trough.

Pigs as small as 8 lbs benefit from wet/dry feeding with two-stage adjustable feed shelf (WF9)

Improve daily gain while decreasing feed and water wastage.

Trough divider and low lip height for wean-to-finish facilities.



WATER-SPACE FEEDER

Wean-to-Finish (F16 & WF8) or Nursery (N2)

Removable feed block turns water-space into wet/dry feed space.

Pigs as small as 8 lbs benefit from wet/dry feeding with two-stage adjustable feed shelf (WF8).

Improve daily gain while decreasing feed and water wastage.

Finishing feeder feeds 12-16 pigs per space; Nursery feeds up to 8.



Patented Water-Space™ enables easy, natural access to water for the newly weaned pig.

CRYSTAL SPRING FEEDER SERIES

Wet/Dry Feeder-to-Finish (40-280+ lbs)	F1
Wet/Dry Wean-to-Finish (14-280+ lbs)	F2
Single Sided Wet/Dry Feeder-to-Finish (40-280+ lbs)	F3*
Water-Space Wean-to-Finish (14-280+ lbs)	F16
Water-Space Wean-to-Finish + 2-Stage Feed Shelf (8-280+ lbs)	WF8
Wet/Dry Wean-to-Finish + Two-Stage Feed Shelf (8-280+ lbs)	WF9
Water-Space Nursery Feeder (8-50+ lbs)	N2**
Wet/Dry Sow Feeder	S2**

MODEL NO.	PIGS PER SIDE	DESCRIPTION
SERIES-115	12-16	15" 1-Hole per side
SERIES-230	24-32	30" 2-Hole per side
SERIES-342	33-42	42" 3-Hole per side
SERIES-348	36-48	48" 3-Hole per side
SERIES-460	48-64	60" 4-Hole per side
SERIES-572	60-80	72" 5-Hole per side
SERIES-686	72-96	86" 6-Hole per side

*Single-sided feeders feed half the pigs as a double-sided model.

**Ask for Nursery & Sow model details.

LEGENDARY QUALITY

All 304 series Stainless Steel; all heavy 16-gauge construction.
Lapped/folded parts eliminate sharp edges & strengthen wear points.
Welded for strong, long-lasting construction
Patented water nipples feature silicon inserts instead of wire springs.
Patented EZ-Adjust provides precise feed control in 1/16" increments.
Many mounting options and accessories available.



Patented EZ-Adjust provides precise control for standard and two-stage feed shelves.



A.J. O'Mara Group FEED EASE Hog Feeders & Equipment

WET/DRY HOG FEEDERS

Paddle Feeder All 304 SS or VALUE available

Part #	Description
FEW28	28" Four space, Feed Ease Wean-to-Finish
FEW42	42" Six space, Feed Ease Wean-to-Finish
FEW56	56" Eight space, Feed Ease Wean-to-Finish
FEW70	70" Ten space, Feed Ease Wean-to-Finish
FEW77-C	77" Five space, Feed Ease Wean-to-Finish. Fast Alley.
FEW84	84" Twelve space, Feed Ease Wean-to-Finish

Tray Feeder

FE48	48" Six space, 36" or 40" H, Wean-to-Finish
FE60	60" Eight space, 36" or 40" H, Wean-to-Finish

Tube Feeder

FET48	48" Two tube, two cup, Wean-to-Finish
FET60	60" Two tube, three cup, Wean-to-Finish
FET84	84" Three tube, four cup, Wean-to-Finish
FET114-5	114" Five tube, four cup, Wean-to-Finish
FET36N	36" Two tube, two cup, Nursery

Sow Feeder

970150	16" Wet Feed Ease Sow Feeder
--------	------------------------------

More Styles and Sizes Available



WATER EASE

WATER CUP

Part #	Description
WEC-1	Single cup w/custom #400 nipple. Wean-to-Finish.
WEC-2C	Double cup w/custom #400 nipple. Wean-to-Finish.
WEC-1N	Single cup w/custom #400 nipple. Nursery.
WEC-2N	Double cup w/custom #400 nipple. Nursery.

NIPPLE BAR

NB4EQ	Nipple bar w/ quick latch. 4 nipples 2 per side.
NB8EQ	Nipple bar w/ quick latch. 8 nipples 4 per side.
NB12EQ	Nipple bar w/ quick latch. 12 nipples 6 per side.
NB16EQ	Nipple bar w/ quick latch. 16 nipples 8 per side.

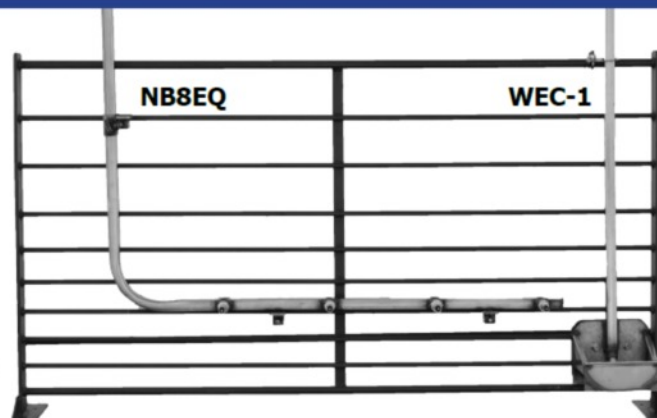
More Styles and Sizes Available



WEC-1



WEC-2C



Nipple Bar
Edstrom Piglet



Water Cup
Custom #400

23 FEED SYSTEMS

1-800-328-8842



BINTRAC[®] } For Hogs

Bin Weighing Systems

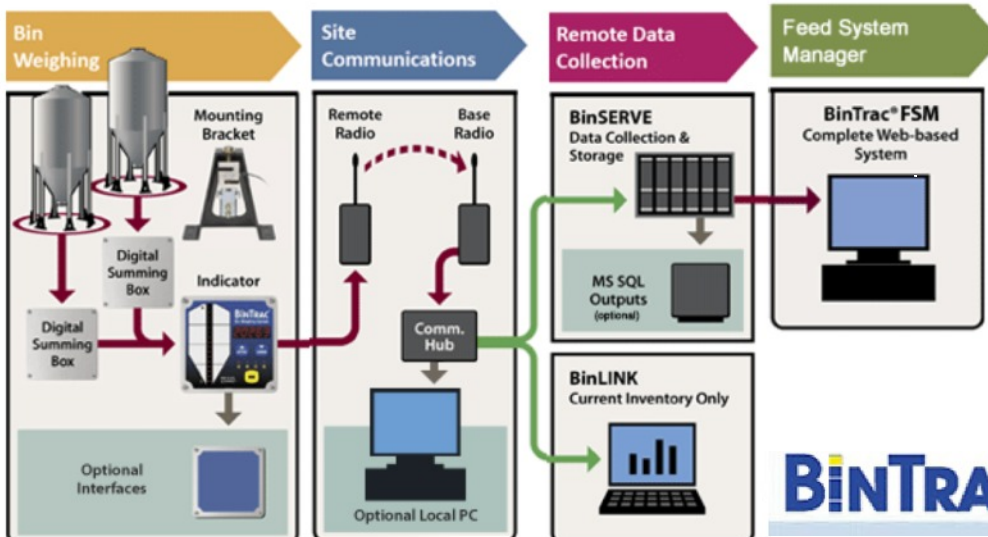
Visit

www.bintrac.com

To view their products

Then have us work with you. Whether it is the whole barn or just the weighing system, we will work with you from start to finish.

- 519641 BINTRAC PRO CONSOLE BT200 ASY-000121
- 519644 BINTRAC CABLE TIE 8"
- 519645 BINTRAC CAB 22AWG 4 COND SHIELDED
- 519646 BINTRAC RADIO BASE
- 519647 BINTRAC COMMHUB PHONE KIT PACKAGE W/POWER SUPPLY
- 519650 BINTRAC LOAD CELL SINGLE 10K W/ W ADAPTOR
- 519651 BINTRAC POWER SUPPLY CONSOLE KIT ASY-000021
- 519652 BINTRAC 50' CABLE INTERFACE W/2 CONNECTOR
- 519653 BINTRAC RADIO REMOTE
- 519654 BINTRAC CABLE RADIO INTERFACE 6'
- 519663 BINTRAC 25' INTERFACE CABLE W/2 CONNECTOR
- 519670 BINTRAC SUMMING BOX 6 LOAD CELL (NO OUTOUT)



BIN LEVEL MONITOR

- Monitor up to Four Bins
- Automatic and Constant
- Easy to Read and Accurate
- Reduce Out-Of-Feed Events
- Reduce Labor Costs
- Easy to Install
- Very Durable
- Save Time
- No Guess Work

BINTRACPRO

Another PALS Catalog → features our feed, medication, insecticide, rodenticide and water treatment products. If you would like a copy just let us know and we will get you one.

www.palsusa.com

1-800-328-8842

Fill your Scripts and VFDs here
rx@palsusa.com



Supplier Of Choice

**FEED ADDITIVES
&
MEDICATION PRODUCTS**











1-800-328-8842 • www.palsusa.com
3735 West 1st Ave • Willmar, MN 56201

PALS features products from these and many more companies:



If we don't carry it, we will do our best to find it for you.

 **FARM**
SERVICE
ELEVATOR



Telephone:

320-235-8870

Toll Free Feed Line: 1-800-328-8849

Toll Free Grain Line: 1-800-205-0902

FAX

320-235-8879

Minnesota's #1 Feed Mill for Turkey and Hog Feed

**"We will strive to meet or exceed our
Customers Expectation always!"**



1-800-328-8842

Fax: (320) 235-8869

rx@palsusa.com

Fill your Scripts & VFDs here