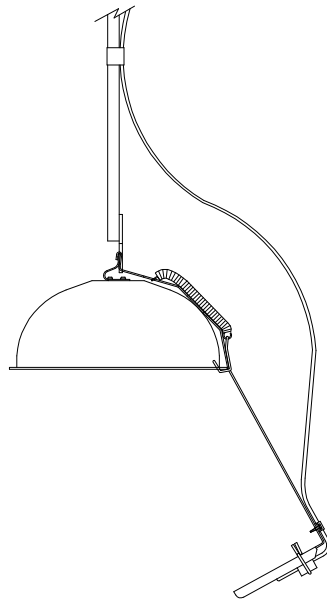


Read carefully the information provided. Retain manual for future reference.

Raydot Radiant Heat Temperature Sensor & Bracket





IMPORTANT!

This merchandise left our premises in prime condition. After unpacking the product, carefully inspect the product for any damage that may have occurred during transit. Check for loose, missing or damaged parts. On all product that sold F.O.B. Cokato, Minnesota, the title passes to the consignee upon receipt of the shipment by the carrier and ends our responsibility. The consignee should immediately file claims for loss or damage to the contents with the carrier as follows:

CONCEALED LOSS OR DAMAGE

Concealed loss or damage means loss or damage, which does not become apparent until the merchandise has been unpacked. The contents may be damaged in transit due to rough handling, even though the carton may not show external damage. When the damage is discovered upon unpacking, make a written request for inspection by the carrier's agent immediately on date of delivery. Then file a claim with the carrier since such damage is the carrier's responsibility. By following these instructions carefully, we guarantee our full support of your claims to protect you against loss from

VISIBLE LOSS OR DAMAGE

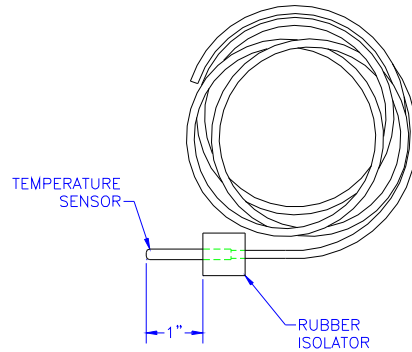
Any external evidence of loss or damage must be noted on the freight bill, express receipt or delivery receipts in the case of UPS shipments, and signed by the carrier's agent. Failure to adequately describe such external evidence of loss or damage may result in the carrier refusing to honor a damage claim. The carrier will supply the form required in filing a claim.

Save Carton and Wrapping for Carrier Inspection

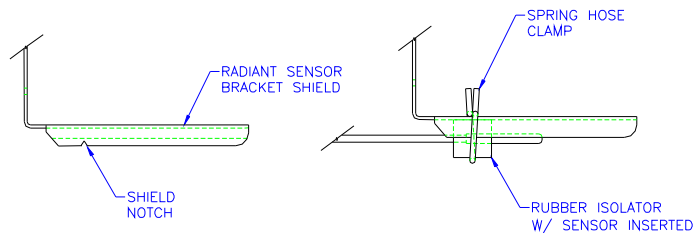
DO NOT RETURN DAMAGED MERCHANDISE TO RAYDOT
FILE YOUR CLAIM AS STATED ABOVE

ASSEMBLY

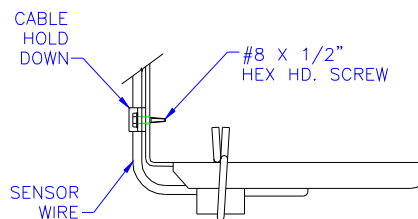
1. Insert the temperature sensor head (part # Ventra/Ventium SR-017-100 or Raydot ZC1353) into the rubber isolator (part # SMP90421) making sure that 1" of the sensor head protrudes from the rubber isolator as in the diagram below. Tip; Lubricating the sensor with a drop of liquid dish soap will ease this step.



2. Center the rubber isolator (part # SMP90421) into the radiant sensor bracket (part # SMP90940) shield notches as shown in the diagram below and hold in place with the spring hose clamp (part # MH90420).

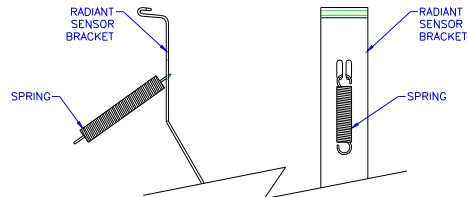


3. The sensor wire shall be attached to the radiant sensor bracket (part # SMP90940) using the cable hold down (part # MH90422) and the #8 x 1/2" hex head screw (part # MH90250).

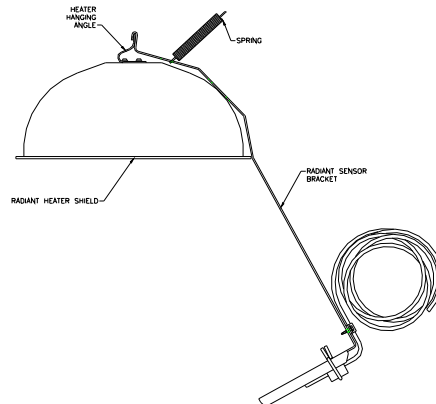


INSTALLATION ONTO HEATER

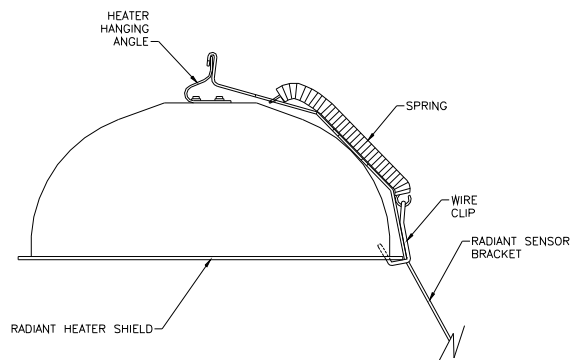
4. Hook one end of the spring (part # ZR1719) to the radiant sensor bracket (part # SMP90940) at the upper end. The loop of the spring may need to be opened slightly to fit onto the radiant sensor bracket.



5. Attach the radiant sensor bracket (part # SMP90940) to the heater-hanging angle.

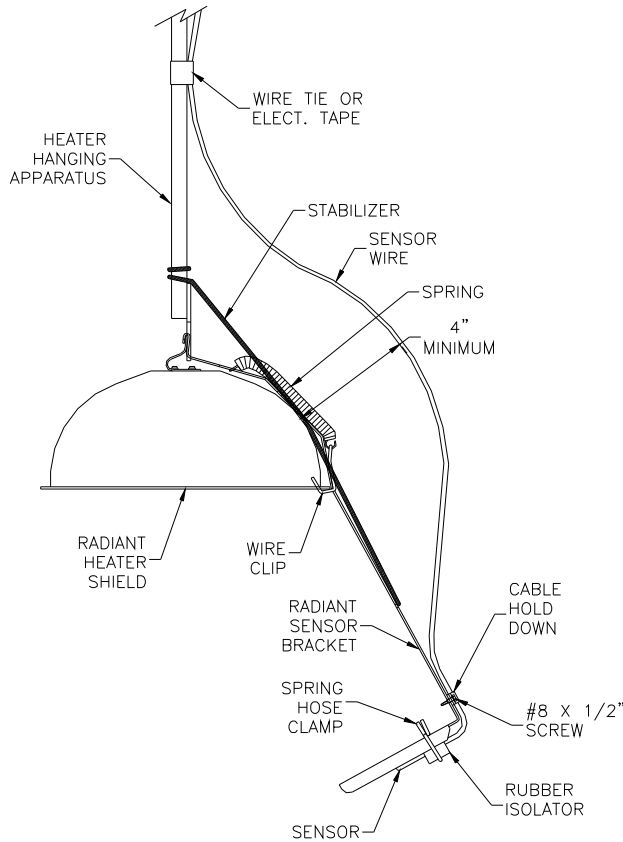


6. Slide the wire clip (part # SMP90941) over the radiant sensor bracket so the short bent ends is to the inside of the bracket. Attach the wire clip (part # SMP90941) to the lower end of the spring (part # ZR1719) and while stretching the spring latch the wire clip over the bottom edge of the heater shield as shown below.



7a. Attach the sensor wire to the radiant heater hanging apparatus ensuring that the sensor wire maintains a minimum clearance of 4" from the heater shield (see drawing below).

7b. When a non-rigid heater hanging apparatus is used the heater may not hang level without the use of a stabilizer. The stabilizer must be made of noncombustible material and shall be tied to the radiant heater bracket at the stabilizer attachment holes and then tied to the hanging apparatus while keeping enough tension to level the heater.



Catalog Number	Description	Qty. Required
SMP90940	RADIANT SENSOR BRACKET	1
SMP90421	RUBBER ISOLATOR	1
MH90420	SPRING HOSE CLAMP	1
SMP90941	WIRE CLIP	1
ZR1719	SPRING, STAINLESS STEEL	1
MH90250	#8 X 1/2" TEK SCREW HEX HD	1
MH90422	CABLE HOLD DOWN	1

Limited Warranty:

Raydot / Valco warrants the Radiant Heat Temperature Sensor to be free from defect in material and workmanship for a period of 12 months, (1year) from date of installation. Raydot / Valco will, at its option, (a) repair or replace such product effecting all necessary parts replacements without charge, F.O.B. Cokato, or (b) refund to the original purchaser the original invoice price, in lieu of such repair or replacement. Under no circumstances will Raydot / Valco be liable for any kind of direct, incidental or consequential damages, nor will the liability ever exceed the purchase price of the Product.

Conditions:

1. Product must be installed, operated and maintained according to factory recommendations.
2. The Product must not have been previously altered, modified, improperly installed or repaired by anyone other than Raydot /Valco authorized dealer or certified representative.
3. This Warranty does not cover Product that has been damaged resulting from, but not limited to, negligent use, improper shipping or handling, misuse, alteration, lack of maintenance, accident, storage or installation other than published instructions. The opinion of Raydot / Valco with respect to these matters shall be final.
4. Raydot reserves the right to make design or specification changes at any time without notice and without any contingent obligation to purchasers or products already sold.
5. This Warranty is extended to the original purchaser and is not transferable or assignable.
6. Warranty will be void if serial numbers or identifying markings are altered, defaced or removed.
7. No Product will be accepted for return until a Return Materials Authorization (RMA) number and/or a form has been issued.

What is Not Covered:

The following are not covered by this warranty:

1. All labor, travel, supplies, freight and related expenses required to repair or replace the defective Product.
2. Damage, deterioration, corrosion, or malfunction resulting from, but not limited to: accident, misuse, abuse, neglect, fire, water, lightning or other acts of nature, improper storage, unauthorized product repair or modification, damage in shipment, removal or installation of product, or any other cause not related to a product defect.
3. Cartons, batteries, and other accessories used in connection with product.
4. Any Product not distributed and/or installed in the U.S.A.

How to Obtain Warranty Service:

Contact Customer Service Department at the phone number below.

Limitation of Damages and Implied Warranties:

RAYDOT'S SOLE LIABILITY FOR ANY DEFECTIVE PRODUCT IS LIMITED TO THE REPAIR OR REPLACEMENT OF THE PRODUCT, AT RAYDOT'S OPTION. RAYDOT SHALL NOT BE LIABLE FOR:

1. DAMAGE TO OTHER PROPERTY CAUSED BY ANY DEFECTS IN THIS PRODUCT, DAMAGES BASED UPON CONVENIENCE, LOSS OF THE PRODUCT, LOSS OF TIME OR DATA, OR COMERCIAL LOSS.
 2. ANY OTHER DAMAGES, WHETHER DIRECT, INCIDENTAL, CONSEQUENTIAL, OR OTHERWISE.
- THIS WARRANTY IS EXCLUSIVE AND IS IN LIEU OF ALL OTHER WARRANTIES, EXPRESS OR IMPLIED, INCLUDING, BUT NOT LIMITED TO, THE IMPLIED WARRANTIES OF MERCHANTABILITY OF FITNESS FOR A PARTICULAR PURPOSE. SOME STATES DO NOT ALLOW THE EXCLUSION OF IMPLIED WARRANTIES OR THE LIMITATION OR EXCLUSION OF LIABILITY FOR INCIDENTAL OR CONSEQUENTIAL DAMAGES. THEREFORE, THE ABOVE EXCLUSIONS OR LIMITATIONS MAY NOT APPLY TO YOU. THIS WARRANTY GIVES YOU SPECIFIC LEGAL RIGHTS, AND YOU MAY ALSO HAVE OTHER RIGHTS, WHICH VARY, FROM STATE TO STATE.

INQUIRIES



Raydot & ValAir are Divisions of VALCO Companies

P.O. Box 117
210 E. Main Street
Coldwater, OH 45828
Ph. 800-998-2526