



BioProteXion
by CID LINES

Cid 2000TM

The power of O_2 and acidification combined.
Waterline cleaner



- » the H_2O_2 removes heavy soils
- » the peracetic acid removes scale / mineral build up
- » equipment friendly
- » no (heavy) metals

Increase your benefits by protecting your livestock

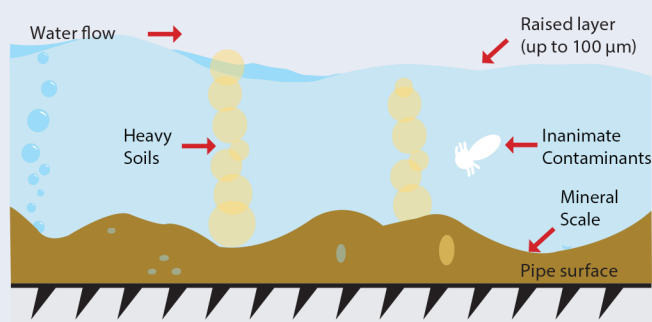
CID LINES
innovative hygiene solutions

www.cidlines.com

Removes Heavy Soils

Heavy soil buildup can block the nipples, reduce the pipe volume by 70 to 80% and hence reduce the water flow from the drinking system considerably. The buildup can “harbor” a lot of soil contaminants which adversely affects the drinking water system. Vaccines and vitamins administered through the water are also negatively affected with buildup in the drinking water system. Simple high pressure flushing will not remove it. Chlorination neither. Oxygenating the lines will indeed.

Cid 2000™ consists of 20% stabilized hydrogen peroxide (H_2O_2) that dissolves into water (H_2O) and Oxygen (O_2). The free gaseous oxygen will “scrub” the nipples and pipes, release and dissolve the heavy soils.



Removes scale

Scale is a layer of inorganic matter. It mostly consists of calcium (Ca) and magnesium (Mg) deposits. Only acids will remove scale. Cid 2000™ also consists of peroxy acetic acids and acetic acids. Those organic acids will remove scale. Scale can equally block the nipples and reduce the water flow. Scale can also harbor soil contaminants acting as attachment sites. A 2% dilution will remove the scale in 12-24 hours contact time.

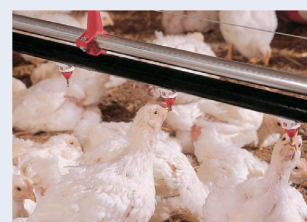
Cid 2000™ application

Cleaning when the system is not in use:

- To clean the system, use a 2% solution (1:50 or 2.5 ounces per gallon of dilution) and leave to work in the system for 12 to 24 hours.
- If applied at 1:128 or 1 ounce per gallon of dilution, leave to work in the system for 24-48 hours.
- Rinse with plenty of clean water to make sure all product is out of the entire system, including nipples or cups.

Cleaning an operating system (animals present):

- Mix Cid 2000™ at 2 ounces per gallon of water to make a stock solution and set metering pump at 1 ounce stock solution to 1 gallon of water (1:128).
- Depending on the water conditions, Cid 2000™ may be increased by 1/2 ounce increments per gallon of stock solution until a maximum of 3 ounces per gallon of stock solution is reached.
- Never use Cid 2000™ more than 5 consecutive days to clean the operating system. Never mix Cid 2000™ in the same stock solution with any other product.



BEST VETERINARY SOLUTIONS, INC.

Ellsworth, IA.....888-378-4045
Willmar, MN800-533-1899
Washington, IN.....877-254-3410
Dagsboro, DE.....877-732-3894
Manheim, PA717-940-4805

CLEARVIEW ENTERPRISES

Tontitown, AR.....866-361-4689
Indian Trail, NC.....704-219-7959

VET SERVICE

Fresno, CA559-485-7474

CID LINES
innovative hygiene solutions

www.cidlines.com
www.bestvetsolutions.com