

## Power contactor kit installation guide

The 240-volt power contactor kit (122-1) is a heavy-duty relay that increases the load handling capability of your control's relay. The 122-1 is ideal for secondary ventilation fans and electric heaters.

The 122-1 power contactor kit includes:

- ◆ Power contactor relay with wiring harness
- ◆ Three-position (on-off-auto) switch
- ◆ Snubber filter
- ◆ Switch position label
- ◆ Mounting bracket and screws (2)
- ◆ Fork connectors (4)

### Accessories

Phason offers the following related accessories. For more information, see your dealer or visit [www.phason.ca](http://www.phason.ca).

- ◆ **240 V power contactor** (PC-240) – includes power contactor relay and mounting hardware for easy mounting in an enclosure.
- ◆ **Snubber filter** (127-0) – an easy-to-install filter that extends the life of relay contacts by absorbing electrical noise.

In addition, the 122-1 power contactor kit is CSA approved for use with the following Phason products.

- ◆ **Large enclosure** (126-0) – a 9 × 7 × 3.75-inch corrosion resistant, water resistant, and fire retardant enclosure. Comes with a template for mounting power contactors.
- ◆ **Small enclosure** (100-0) – same as above, but 4.75 × 6.25 × 3.75 inches in size.
- ◆ **240 V power contactor unit** (129-0) – includes two power contactor relays, two on-off-auto switches, and two snubber filters, mounted in a large enclosure. The enclosure has room for two additional contactor relays or kits.
- ◆ **18 VDC power supply** (124-1) – includes +18 and –18 VDC fused outputs and a snubber filter, all mounted in a large enclosure. The enclosure has room for two additional contactor relays or kits.

## Electrical ratings

- ◆ Coil: 10.2 mA at 240 VAC
- ◆ Contact: 25 A at 240 VAC; resistive  
2 HP at 240 VAC, 1 HP at 120 VAC; motor, power factor 0.4  
1300 W at 120 VAC; tungsten

## Installing the power contactor



Power contactors must be installed by a qualified electrician.

Install power contactors and all equipment connected to them according to local electrical codes.

Before installing or servicing equipment, switch OFF the incoming power at the source.



When wiring the power contactor, use fork or spade connectors at all terminals. Do not remove the existing connectors from any of the terminals.

## Mounting the power contactor relay

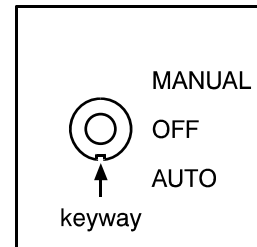
Follow the instructions below to mount the power contactor. The CSA-approved products (see the list on page 1) have a mounting template attached to the inside of the enclosure.

1. If required, mark the location for the power contactor using the template on page 3.
2. Note the height of the power contactor and how far the switch will extend into the enclosure. Make sure the power contactor and switch will not touch any other internal components and that you have space for making the wiring connections.
3. After verifying the location for the power contactor, drill the 3/16-inch holes in the enclosure where they are marked. **Make sure you do not damage any internal parts while drilling.**
4. Fasten the mounting bracket to the enclosure using the two screws provided.

## Mounting the switch

The 122-1 power contactor kit comes with a three-position switch.

- ◆ **Manual** The load is on.
- ◆ **Off** The load is off.
- ◆ **Auto** The control operates the load.



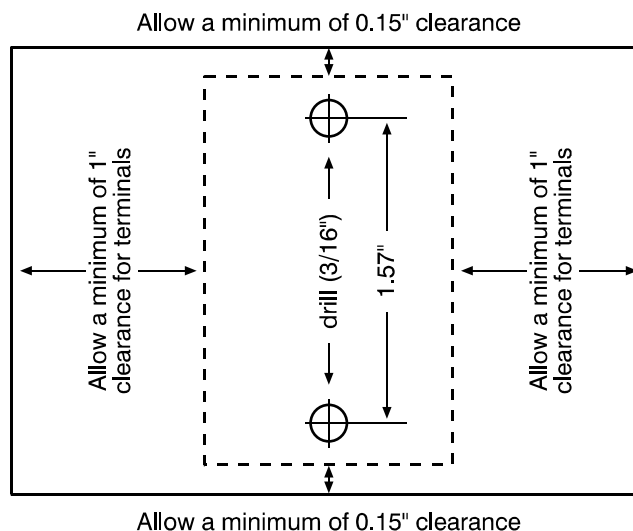
Follow the instructions below to mount the switch.

1. Select a location for the switch. Note how far the switch will extend into the enclosure and make sure the switch will not touch any other internal components.
2. Drill a 1/2-inch hole in the cover of the enclosure. **Make sure you do not damage any internal parts while drilling.**
3. Remove the backing from the label. Align the label with the hole and then attach it to the outside of the enclosure.
4. Remove the nut from the switch.
5. Insert the switch through the hole and align it as shown.
6. Fasten the switch to the enclosure using the nut. Do not exceed 40 inch-pounds of force when tightening the nut.

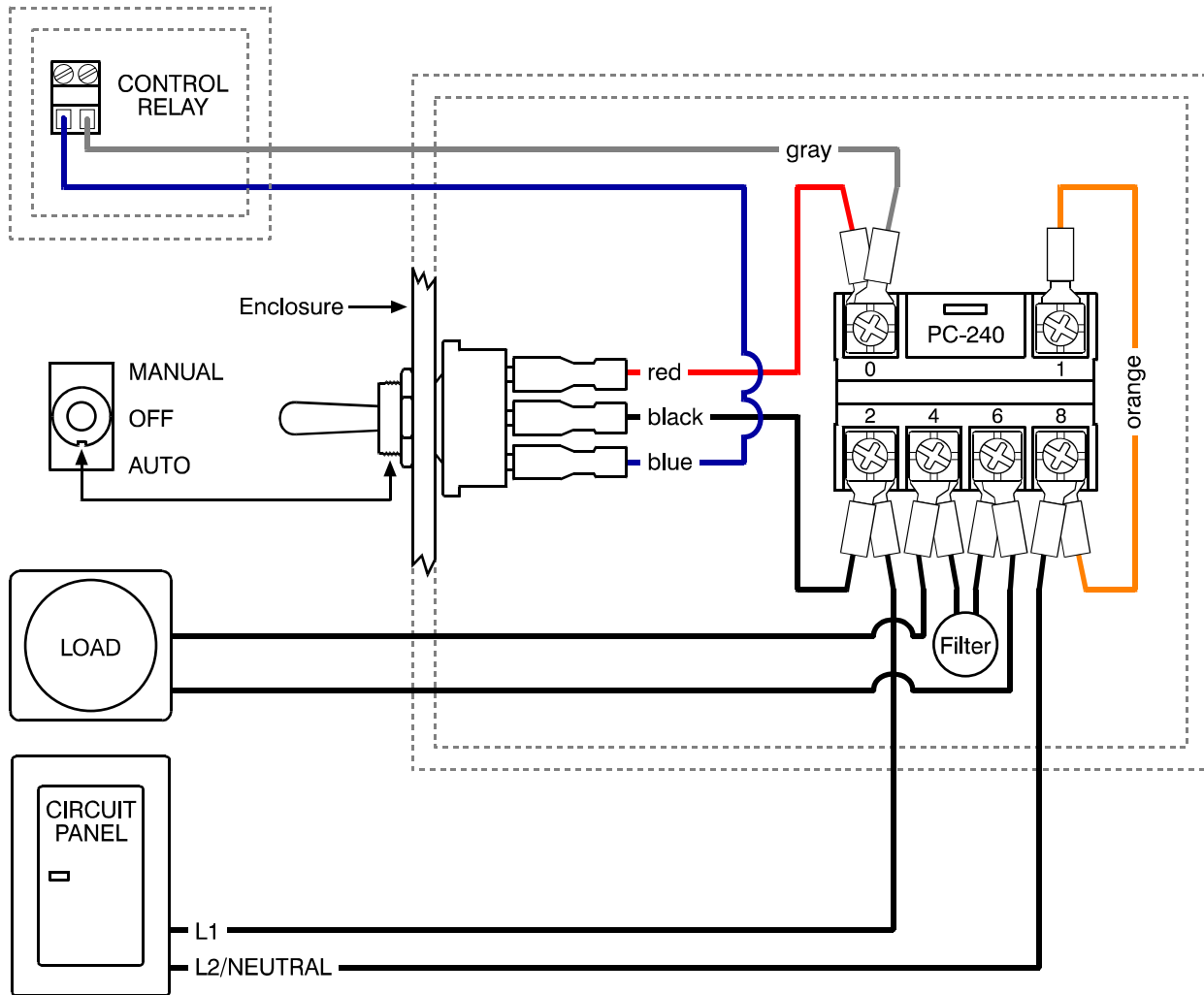
## Mounting template

If you are *not* using one of the CSA-approved products (see the list on page 1) that have a mounting template attached to the inside of the enclosure, use the template provided below.

----- To remove the template, cut along the dotted line. -----



**Wiring the power contactor**



- ◆ Use fork or spade connectors at all terminals.
- ◆ Do not remove the existing connectors from any of the terminals.