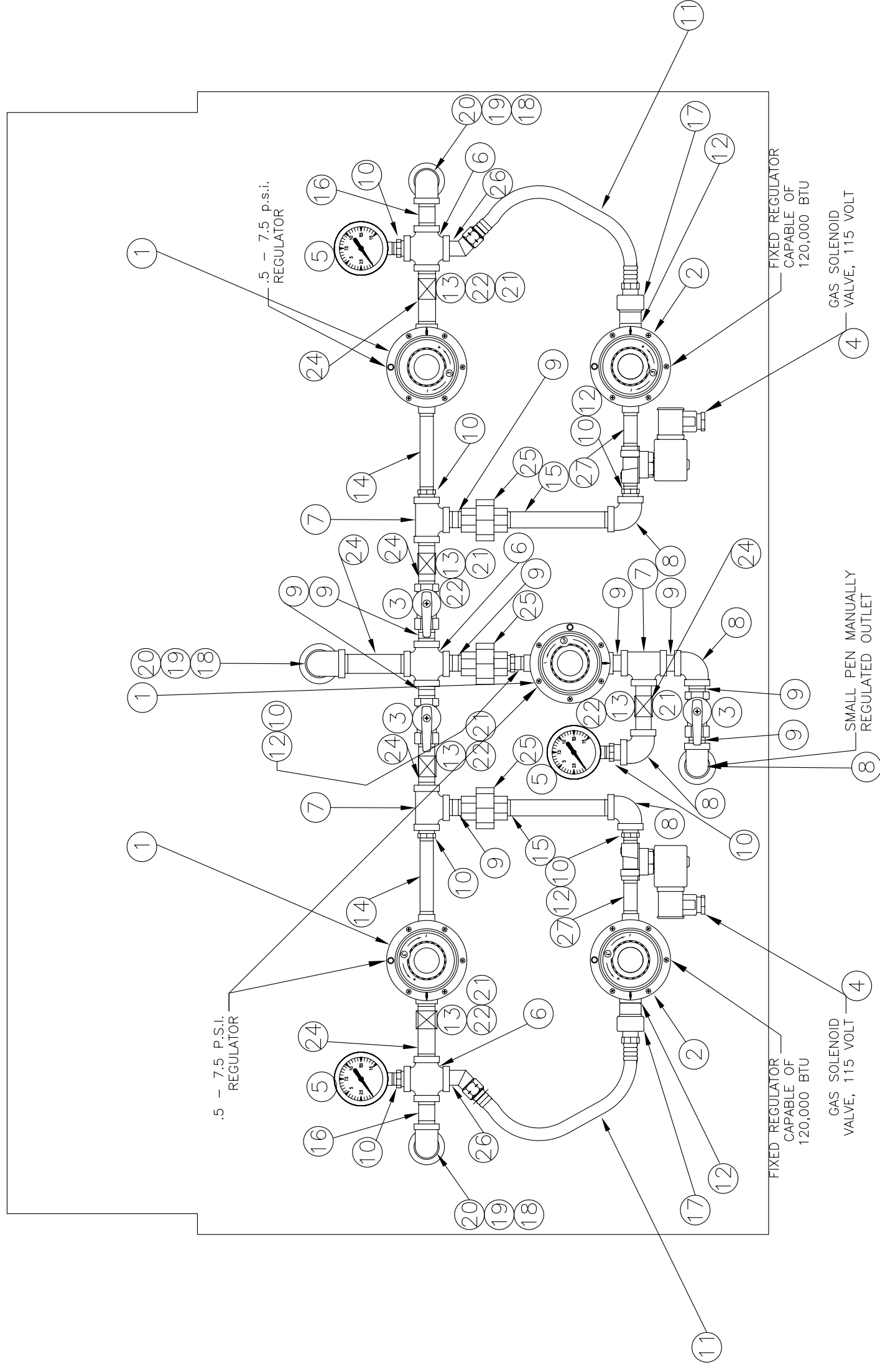


NO.	PART #	PART NAME	REQ'D
1	PL-001-001	LOW FIRE REGULATOR	3
2	PL-001-002	HIGH FIRE REGULATOR	2
3	PL-009-006	GAS VALVE, AGA, 3/8" N.P.T. FEMALE	3
4	H501	GAS SOLENOID VALVE, (#807110)	2
5	PL-009-011	GAUGE 2" S.S., 1/4" N.P.T., 0-15 P.S.I.	3
6	PL-009-023	CROSS, 3/8" N.P.T., GALVANIZED	3
7	PL-009-008	TEE, 3/8" N.P.T., GALVANIZED	3
8	PL-009-007	ELBOW, 90°, 3/8" N.P.T., GALVANIZED	5
9	PL-009-005	NIPPLE, CLOSE, 3/8" N.P.T. GALVANIZED	9
10	PL-009-009	BUSHING, 3/8"x1/4" N.P.T., GALVANIZED	8
11	PL-009-001	HOSE, LP/NG, 3/8" X 11", 3/8" M-F	2
12	PL-009-019	NIPPLE, CLOSE, 1/4" N.P.T., GALVANIZED	3
13	PL-009-010	1/2" CONDUIT STRAP	5
14	PL-009-025	NIPPLE, 1/4" X 4" N.P.T. GALVANIZED	2
15	PL-009-022	NIPPLE, 3/8" X 5" N.P.T. GALVANIZED	2
16	PL-009-027	NIPPLE, 3/8" X 1-1/2" N.P.T. GALVANIZED	2
17	PL-009-028	BELL REDUCER 1/4"x3/8"N.P.T. GALVANIZED	2
18	PL-009-029	BUSHING 3/8"x1/2"N.P.T. GALVANIZED	3
19	PL-009-030	NIPPLE, CLOSE 1/2" N.P.T. GALVANIZED	3
20	PL-009-031	ELBOW 90 RDUCR 1/2"x3/4" N.P.T. GALV	3
21	HW-70-001	THREADED INSERT, BRASS, #10-24 X 1/4"	5
22	HW-90	#10-24 X 3/4", RND HD, PHIL SCREWS	5
23	PN-002-002	PANEL, HDPE, MACHINED	1
24	PL-009-017	NIPPLE, 3/8" X 3" N.P.T. GALVANIZED	8
25	PL-009-021	UNION 3/8"N.P.T.TO 3/8" N.P.T. GALVANIZED	3
26	PL-003-011	ELBOW 3/8 NPT 3/8 FLARE 45 DEGREE	2
27	ZH522	1/4 X 2-1/2 NIPPLE NPT GALVANIZED	2



DATE:	081506
DRAWN BY:	JMH
ENGR:	
APPROVED:	
DLR:	NONE
OLD DWG. #	NEW
TOLERANCES UNLESS OTHERWISE SPECIFIED	FRACTIONS ± 1/32
DECIMALS	± .030
INCH X	± .020
.XXX	± .010
ANGLES	± 0°30'

GAS MANIFOLD PANEL, 2 ZONE W/ MANUAL REGULATORS & SOLENOID VALVES

DATE: 081506
DRAWN BY: JMH
ENGR:
APPROVED:
DLR: NONE

SCALE: NONE

SHEET 1 of 1

NEW DRAWING NUMBER BE-020-201