

# NEW REVERSING RELAY FOR A.T NEWELL CURTAIN MACHINES (PART NUMBER 1558-1)

A new Reversing Relay has been implemented for A.T Newell Curtain Machine **Models 506, 507, 511, and 511FD.**

To install the new reversing relay please read the following instructions.

STEP 1: Before hooking up relay disconnect power to Curtain Machine.

STEP 2: Attach relay to Din Rail (# 1514-DR) by sliding relay up against rubber tabs (FIGURE 1) then snap in relay. Adjust relay to be in the center of Din Rail. (FIGURE 2)

STEP 3: Attach mounting bracket (# 1514-BR) to 12x12 enclosure by lining up holes in mounting bracket with (4) existing holes in 12x12 enclosure.  
**Note: These holes are in the same location where the old relay was fastened.** Use 4 screws provided to secure mounting bracket. (FIGURE 3)

STEP 4: Drill (2) 1/8" holes in 12x12 enclosure using the remaining 2 holes in mounting bracket for a guide.

STEP 5: Using the slots on the Din Rail attach Din Rail and Relay to mounting bracket using the (2) remaining screws provided. The screws should go through mounting bracket and 12x12 enclosure.

STEP 6: **DISCONNECT ALL POWER SOURCES BEFORE ATTEMPTING TO WIRE RELAY!** Once all components are in place, follow wiring diagram (FIGURE 4) and proceed to wire the new relay.

**NOTE: You will no longer need (1) white wire that is in the bottom center of old relay.**

STEP 7: Once wiring is complete, please check Curtain Machine to see that it functions correctly.

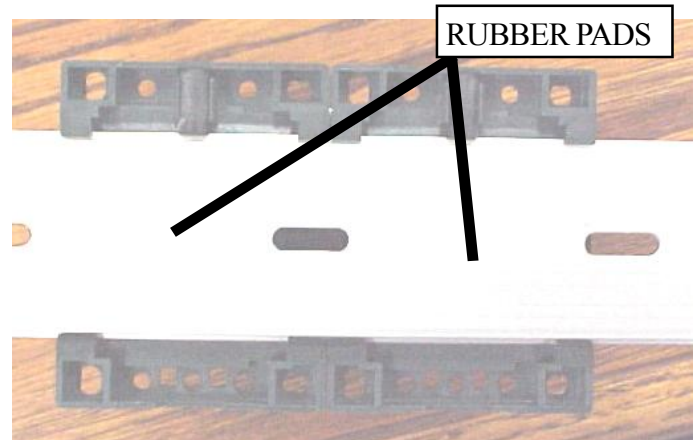


FIGURE 1 - Rubber Pads

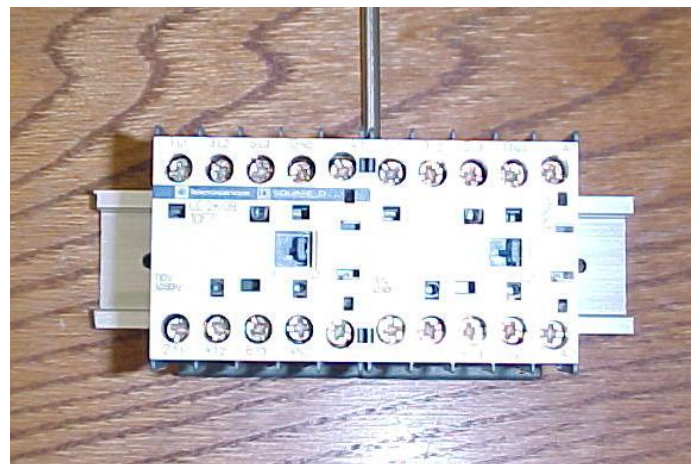


FIGURE 2 - Relay in Center of Din Rail

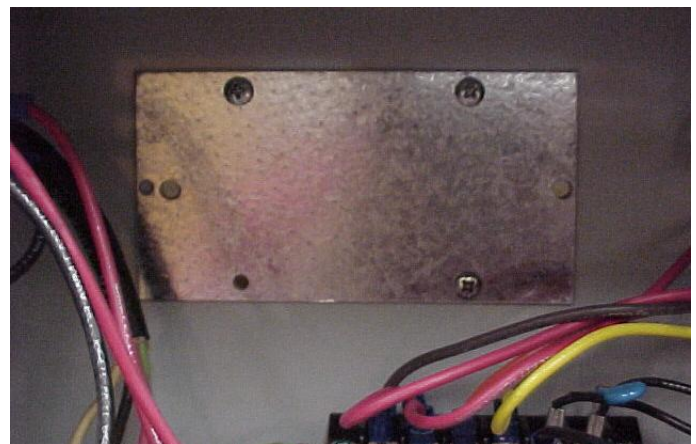
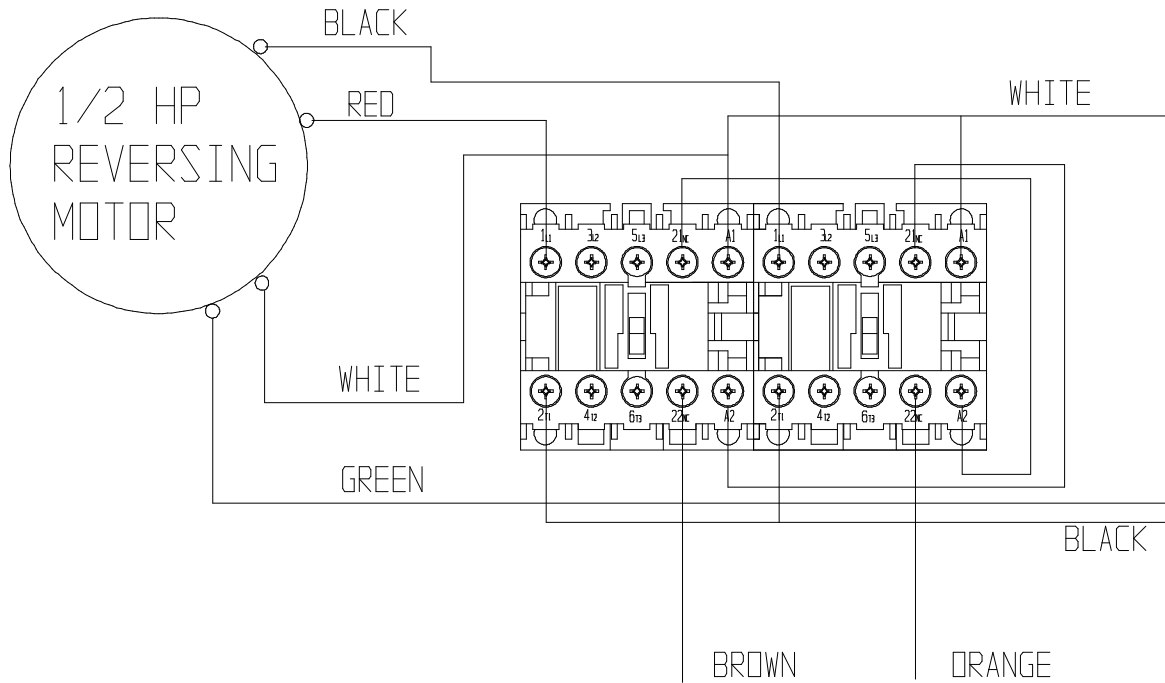


FIGURE 3 - Mounting Bracket

# MECHANICALLY INTERLOCKED REVERSING CONTACTOR

AC1558-1



TO INSTALL NEW RELAY YOU WILL NO LONGER  
NEED THE WHITE WIRE THAT IS IN THE BOTTOM  
CENTER OF OLD RELAY

**FIGURE 4 - Wiring Diagram**



a division of  
THE GSI GROUP



AP/Cumberland  
P.O. Box 20  
1004 East Illinois Street  
Assumption, IL USA  
USA Ph: 217-226-4401  
USA Fax: 1-800-353-8491  
Int'l Ph: 217-226-4401  
Int'l Fax: 217-226-4420

**PNEG-1538**

**DATE: 9-15-06**



Copyright © 2006 by the GSI Group  
Printed in the USA