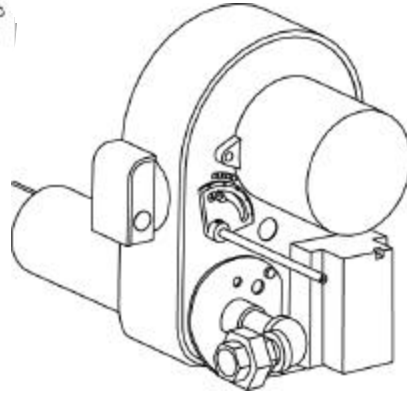


Replacement Parts List

Model Economite RE4400DS & RE4400DSA



Installation Manual 8471 25

- First Construction Date: May, 2001
- Spark rod electrode assembly position and part number change Date: November, 2001



Midco[®]
INTERNATIONAL

Midco[®] International Inc.

4140 West Victoria Street
Chicago, Illinois 60646
tel 773.604.8700
fax 773.604.4070
web www.midco-intl.com
e-mail sales@midco-intl.com

AVOID ERROR IN PARTS SELECTION. When ordering use complete Midco[®] Part Number and Description. Furnish Burner Model Number, Bill of Material Number and Serial No. (if available) from rating plate.

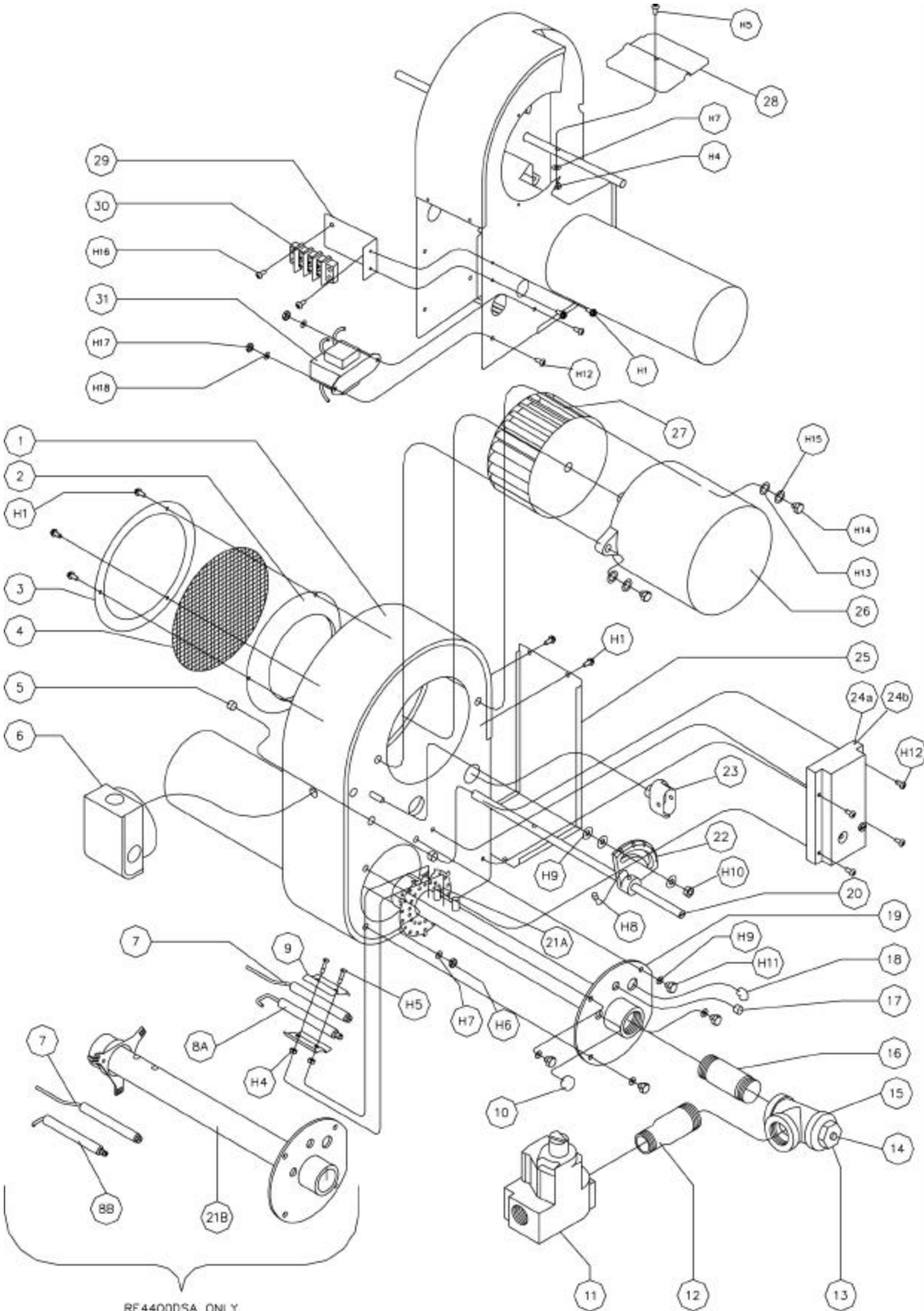
IMPORTANT: This bulletin details standard stocking **RE ECONOMITES** and some customized parts for O.E.M. burners.

IMPORTANT: Availability of parts as well as specifications are subject to change without notice. Please consult factory for item availability.

Quality Designed for Proven Performance

1201
8472 75
Printed in USA

RE4400DS and RE4400DSA Exploded View




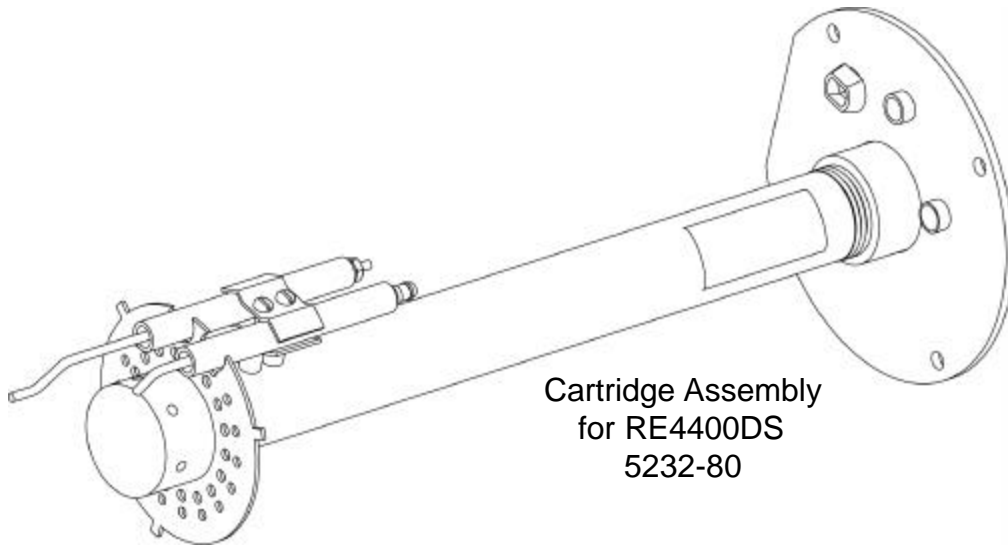
RE4400DS and RE4400DSA Parts List

| Item # | Part # | Description | Qty. |
|------------------|----------|--------------------------------------------------|------|
| 1 | 5230-90 | BLOWER HOUSING WELDMENT | 1 |
| 2 | 5230-58 | AIR INLET COLLAR | 1 |
| 3 | 5230-57 | FRONT RING | 1 |
| 4 | 5230-59 | AIR SCREEN | 1 |
| 5 | 8450-19 | NYLON INS. | 1 |
| 6 | 8425-19 | AIR SWITCH | 1 |
| 7 | 5230-84 | FLAME ROD ASSEMBLY | 1 |
| 8A | 6418-12 | SPARK ELECTRODE ASSEMBLY FOR RE4400DS | 1 |
| 8B | 6418-05 | SPARK ELECTRODE ASSEMBLY FOR RE4400DSA | 1 |
| 9 | 5232-25 | FLAME ROD BRACKET | 1 |
| 10 | 8457-02 | 7/16" DOME PLUG | 1 |
| 11 ¹ | 8419-70 | GAS VALVE, SLOW OPENING | 1 |
| 12 | 8492-01 | 1" x 3/4" REDUCING NIPPLE | 1 |
| 13 | 8492-71 | 1" x 1/8" HEX BUSHING | 1 |
| 14 | 8496-00 | 1/8" PIPE PLUG | 1 |
| 15 | 8494-43 | 1" TEE, BLACK MALLEABLE | 1 |
| 16 | 8488-52 | 1" x 2" LONG NIPPLE | 1 |
| 17 | 8452-32 | 7/16" WINDOW PLUG | 1 |
| 18 | 8484-75 | STRAIN RELIEF 90 DEGREE | 1 |
| 19 | 5230-88 | BACK PLATE WELDMENT | 1 |
| 20 | 5230-61 | SHUTTER SHAFT | 1 |
| 21A | 5232-79 | BURNER HEAD WELDMENT FOR RE4400DS | 1 |
| 21B | 5232-21 | BURNER HEAD WELDMENT FOR RE4400DSA | 1 |
| 22 | 3152-15 | QUADRANT | 1 |
| 23 | 8480-11 | 3/8" BX DUPLEX CONNECTOR | 1 |
| 24A ¹ | 8429-31 | ELECTRONIC CONTROL (M-H S87K - 30 SEC. PREPURGE) | 1 |
| 24B ¹ | 8429-03 | ELECTRONIC CONTROL (M-H S87D) | 1 |
| 25 | 5230-56 | BLOWER HOUSING DOOR | 1 |
| 26 | 8437-51 | 1/6 HP MOTOR 115/60 | 1 |
| 27 | 8437-52 | BLOWER WHEEL | 1 |
| 28 | 5230-55 | AIR SHUTTER | 1 |
| 29 | 5231-56 | TERMINAL STRIP BRACKET | 1 |
| 30 | 8408-78 | 3 POSITION BARRIER TERMINAL STRIP | 1 |
| 31 | 5231-57 | TRANSFORMER ASSEMBLY | 1 |
| 32 | ORIFICES | ORIFICES - SEE PG 4 FOR COMPLETE LIST | 1 |
| 33 | 8416-53 | 7/8" x 32" 1/8" SPRING | 1 |

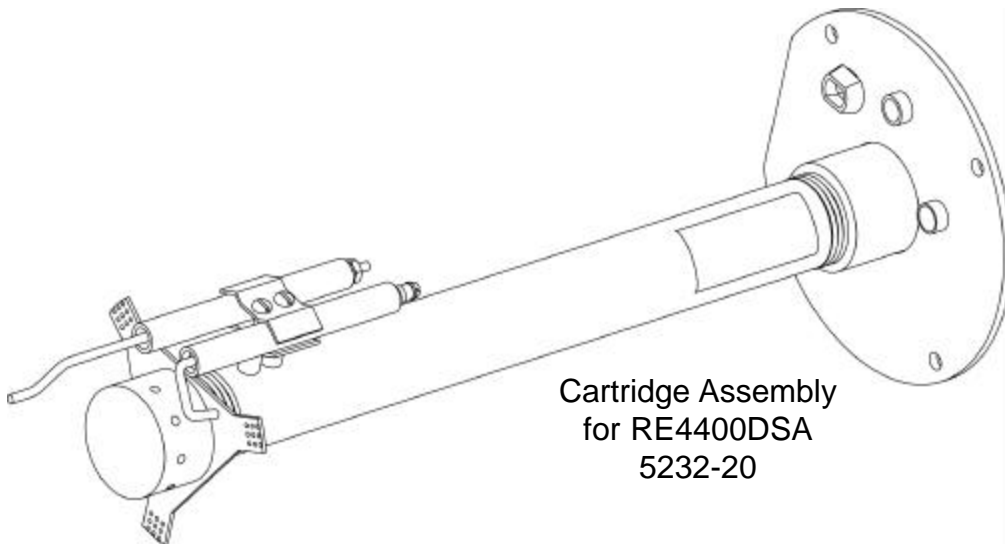
| Not Shown | Part # | Description | Qty. |
|-----------|---------|---------------------------------------|------|
| | 8504-60 | SPARK WIRE ASSEMBLY | 1 |
| | 8504-46 | 19" FLAME ROD WIRE ASSEMBLY | 1 |
| | 8484-72 | STRAIN RELIEF BUSHING | 1 |
| | 8480-15 | REDUCING WASHER | 1 |
| | 8480-01 | 3/8" BX, 9" LONG | 1 |
| | 8457-40 | SNAP BUSHING | 1 |
| | 8457-41 | STRAIN RELIEF BUSHING | 1 |
| | 8457-38 | PLASTIC PLUG FOR .875" DIA HOLE | 1 |
| | 8457-37 | PLASTIC PLUG FOR 1.1" DIA HOLE | 1 |
| | 8457-36 | DOME PLUG | 1 |
| | 7400-01 | GROUNDING WIRE 2" GREEN | 1 |
| | 5205-30 | 3 TERM BLACK LABEL | 1 |
| | 5230-68 | MOUNTING FLANGE WITH GASKET | 1 |
| | 8452-48 | GASKET ONLY (FOR MOUNTING FLANGE) | 1 |
| | 3252-00 | OPEN LABEL | 1 |
| | | SUB-ASSEMBLIES AVAILABLE (SEE PAGE 4) | |
| | 5232-80 | CARTRIDGE ASSEMBLY (DS) | 1 |
| | 5232-20 | CARTRIDGE ASSEMBLY (DSA) | 1 |

NOTES

-  WARNING: Explosion hazard. Can cause serious injury or death. This device can malfunction if it gets wet. Never try to use a device that has been wet -- replace it.



Cartridge Assembly
for RE4400DS
5232-80



Cartridge Assembly
for RE4400DSA
5232-20

Midco International has used a number of orifices to restrict the flow of fuel. To properly select the correct orifice contact the factory.

List of Main Gas Orifices

| Part # | Dia. (in inches) | Stamp # |
|---------|---------------------|---------|
| 5230-23 | .290 | B |
| 5230-24 | .261 | C |
| 5230-26 | .219 | E |
| 5230-31 | .358 | J |

