



Intelligent Feed Control.

FlexTra™ – Feed System Controls Flexibility with 1,2 or 3 Motor Operation

Advanced microprocessor based design

Intelligent control and monitoring of feed systems

- Senses & controls feed levels
- Controls and monitors feed auger “Run Times” and “Delay Times”
- Displays and records total feed auger run time

The VAL-CO Family

- Watering Systems
- Feed Bins, Fill Systems
 - Feeders
- Ventilation Fans
 - Inlets
 - Lighting
 - Heaters
- Evaporative Cooling
- Whole House Controllers™
 - Incinerators
- Crates, Stalls, Penning
 - Flooring
- Electronic Weighing/
Sorting Systems

Flexibility

- Flexibility allows FlexTra to be wired in various configurations (see diagrams on back)
- Controls can be ordered for 1, 2 or 3 motor feed systems (see diagrams on back)
- Operates Single Phase or Three Phase motors
- Built in electronic timer - superior to other timers
- Ability to be set to inactive when no animals are present

Peace of mind

- Built in audible alert with flashing display while alarming
- Alarms when “Run Time” is excessive – indicating an empty bin or bridging
- Alarms when “Full Time” excessive indicating blockage or sensor malfunction
- Alarms if Pressure switch is activated in discharge head
- Alarm relay can be used to activate external alarm devices; such as a horn or auto dialer
- Manual override toggle switch
- Protects against voltage surges

User Friendly

- Easy to read Display in English or Spanish.
- Remote access with wall mount models
- Mounts on wall, galvanized or polycarbonate discharge heads (as shown to the right)
- Reliable service and support

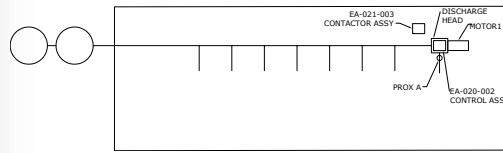




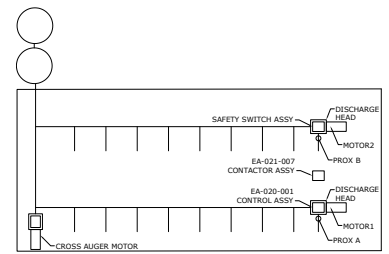
Operating temperatures
-4° to 167°F (-20° to 75°C)

Feed Sensor (Proximity Switch)

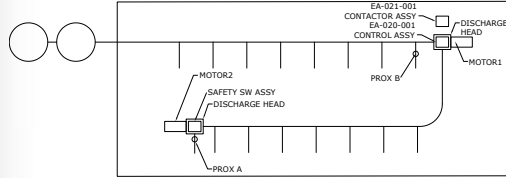
The capacitive sensor is an electronically controlled non-touch switch. The relay switches as soon as the sensor is activated, but when the feed ceases, there is a delay before the relay switches back. The use of electronic rather than mechanical switches ensures reliability, particularly with this plastic enclosed design. This gives it protection against humidity, dust and other contaminations found in the environment.



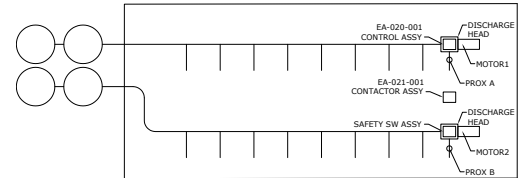
Model FL101 –
PROX A location



Model 201X –
PROX A and PROX B locations,
“CROSS AUGER” Configuration



Model 201 –
PROX A and PROX B locations,
“CONSECUTIVE” Configuration



Model 201 –
PROX A and PROX B locations,
“INDEPENDENT” Configuration

Specifications

- Fuses** Power Supply Input: 0.125 Amp 250VAC (5 x 20mm) slow-acting interrupting type (Littelfuse 218 0.125 or equivalent)
- Power Input** 220-240VAC 60 Hertz power supply 1.6A Maximum
Maximum torque on power input terminal screws is 8 inch-pounds.
- Output** 240VAC 1.5 HP Maximum per contactor;
Model FL-101 - 1 contactor; Model FL-201 – 2 contactors
- Alarm Output** SPDT rated 120VAC / 240VAC, 3A general purpose, NO/NC connection
- Sensor Inputs** Capacitive proximity sensors
(2 for model FL201-1; 1 for model FL101-1)
- Environmental** Type 4, 4X
- Dimensions** Width is approximately 4.76 inches (or 120.9 mm)
Depth is approximately 3.16 inches (or 80.3 mm)
Height is approximately 6.73 inches (or 170.9 mm)

Feed Delivery Rates – VAL-CO Flex Auger Systems				
MODEL	720	730	735HV	735HM
DIAMETER (in)	2.25	3.00	3.50	3.50
RATE (lb/min)	15	50	100	50

Call your local **VAL-CO** representative or distributor for more information on these and our other fine products.

North America:
Phone: 800.99VALCO (800.998.2526)
Fax: 419.678.2200
E-mail: sales@valcompanies.com

International:
Phone: 717.392.3978
Fax: 717.735.1800
E-mail: intl.sales@valcompanies.com

