

Birthright™ Bridge

Formulated especially for disadvantaged pigs

Birthright™ Bridge is highly digestible natural nutrition for fall-behind pigs that bridges the gap from milk to feed and promotes gut health.

Helps Overcome:

- Lack of appetite
- Social competition
- Transition challenges



What's Inside:

STRONG ANIMALS® TECHNOLOGY

Microfused™
Essential Oils

PATENT-
PENDING

Reduce pathogen load, oxidative stress and promote health of stressed pigs while stimulating appetite.

Actifibe™ Prebiotic

Feed beneficial gut bacteria and promote immune function.

Life Advantage
Protein

Promote digestion through slow release proteins which help reduce the incidence of scours.

CRYSTALLINE
AMINO ACIDS

Increases gain and efficiency.

SUPPLEMENTAL
ENZYMES

More efficient gains, improved health.

ELECTROLYTES

Promotes hydration which is critical for health and nutrient transportation.

**NO VFD
REQUIRED**

Directions for Success:

Mix with water until desired consistency.
See tag for full directions for use.



THE DIFFERENCE **Birthright™ Bridge** is powered by **Strong Animals®** technologies that make it the most effective milk-to-feed bridge in times of stress.

POWERED BY **STRONG ANIMALS®** TECHNOLOGY PATENT PENDING



STRONG ANIMALS®
TECHNOLOGY
Microfused™ Essential Oils

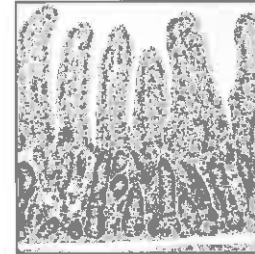
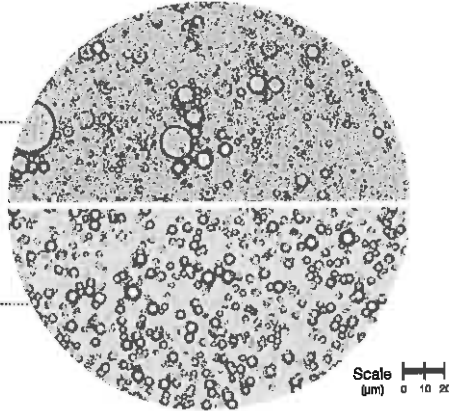
Patent-pending **Microfused™ Essential Oils** have smaller, more uniform droplets that stay stable over time and temperature. Protected droplets get where they are needed to facilitate and maintain intimate contact.

Competitor Oil:

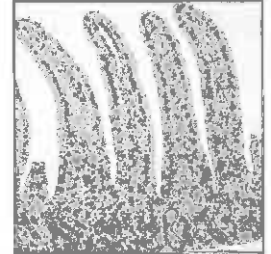
Larger oil droplets in competitive oil products coalesce and become unstable

Microfused™ Essential Oils:

20 times greater surface area; 100 drops per 1 drop of competitor



Control



Microfused™ Essential Oils

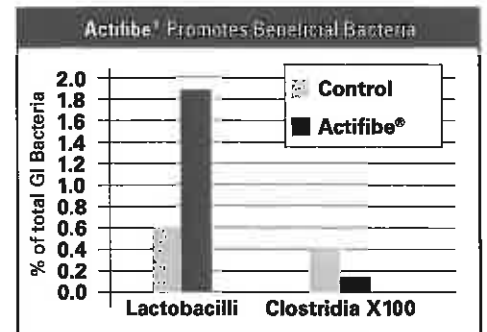
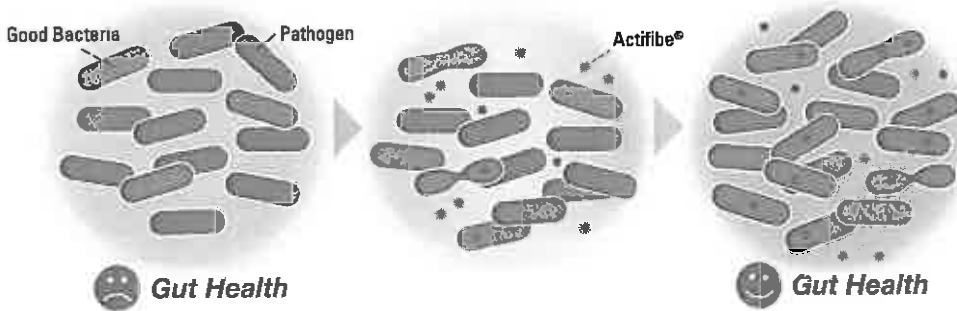
These micrographs demonstrate the increased strength of the villi, which directly contributes to greater nutrient absorption.

POWERED BY **STRONG ANIMALS®** TECHNOLOGY



STRONG ANIMALS®
TECHNOLOGY
Actifibe® Prebiotic

Beneficial bacteria multiply when they feed on **Actifibe®** crowding out pathogens for improved health and performance.



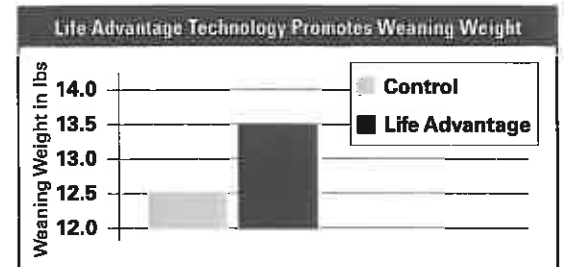
Research conducted by Purdue University

POWERED BY **STRONG ANIMALS®** TECHNOLOGY



STRONG ANIMALS®
TECHNOLOGY
Life Advantage Protein

Clotting and non-clotting proteins in proprietary **Life Advantage** technology allow baby pigs to absorb more nutrients for increased average daily gain.



Cabreva, R., Fredstuffs

9104 Birthright™ Bridge

A Complete Feed for Weaned Nursery Pigs

Guaranteed Analysis					
Crude Protein	min	21.39 %	Salt	min	0.70 %
Lysine	min	1.60 %	Salt	max	1.20 %
Crude Fat	min	8.60 %	Sodium	min	0.50 %
Crude Fiber	max	1.40 %	Sodium	max	1.00 %
Calcium	min	0.50 %	Selenium	min	0.30 ppm
Calcium	max	1.00 %	Zinc	min	95 ppm
Phosphorus	min	0.60 %	Phytase	min	150 FTU/lb*

(*Pichia pastoris*, *Trichoderma reesei*)

List of Ingredients

Dried Whey, Grain Products, Processed Grain By-Products, Animal Protein Products, Plant Protein Products, Porcine Digest, Dried Fermentation Biomass, Hydrolyzed Animal Fat, Hydrated sodium calcium aluminosilicate, Vegetable Fat, Calcium Carbonate, Lignin Sulfonate, L-Lysine, Phosphoric Acid, Fumaric Acid, Amorphous Silicon Dioxide, Lactic Acid, Citric Acid, DL-Methionine, Sodium Chloride, L-Threonine, Potassium Chloride, Roughage Products, Ferrous Sulfate, Strawberry Flavor, Saccharin Sodium, Vitamin E Supplement, L-Tryptophan, Selenium Yeast, Zinc Oxide, Manganese Sulfate, Mineral Oil, Diatomaceous Earth (flow agent), Zinc Sulfate, Chromium Propionate, Calcium Pantothenate, Lecithin, Potassium Sorbate, Dried *Trichoderma reesei* Fermentation Product, Niacin Supplement, Hemicellulose Extract, Essential Oils, Silicon Dioxide, Copper Chloride, Menadione Nicotinamide Bisulfite, Riboflavin Supplement, Vitamin A Supplement, Vitamin B12 Supplement, Folic Acid, Pyridoxine Hydrochloride, Vitamin D3 Supplement, DL-alpha Tocopherol Acetate Thiamine Mononitrate, Dried *Pichia pastoris* Fermentation Product, Natural Flavor, Ethylenediamine Dihydrochloride, Biotin, Choline Chloride, Dicalcium Phosphate, Cobalt Sulfate, Copper Sulfate, Potassium Iodide, Calcium Iodide, Magnesium Sulfate, Copper Proteinates, Manganese Proteinates, Iron Proteinates, Zinc Proteinates, Egg Product

Feeding Directions

Feed at a rate of 0.25-1 pounds per pig.

CAUTION: Follow label directions. The addition to feed of higher levels of this product containing selenium is not permitted.

*One unit of phytase activity (FTU) is defined as the quantity of enzyme which liberates 1 micro-mole of inorganic phosphorus per minute.

WARNING: This product, which contains added copper, should not be fed to sheep or related species that have a low tolerance to copper.



Manufactured For:
Ralco Nutrition, Inc.
1600 Hahn Road
Marshall, MN 56258 U.S.A
1-800-533-5306



NET WEIGHT 25 lb. (11.4 kg)
Lt Green

LOT NO: 2.8.2017

