

BALDOR

BALDOR® • RELIANCE

Part Information Packet

APPLIED INDUSTRIAL TECHNOLOGY

VL3504

.5HP, 1725RPM, 1PH, 60HZ, 56C, 3421L, TEFC, F1

Part Detail							
Revision:	AA	Status:	PRD/A	Change #:		Proprietary:	No
Type:	AC	Prod. Type:	3421L	Elec. Spec:	34WG5422	CD Diagram:	CD0001
Enclosure:	TEFC	Mfg Plant:		Mech. Spec:	34C063	Layout:	34LYC063
Frame:	56C	Mounting:	F1	Poles:	04	Created Date:	
Base:	N	Rotation:	R	Insulation:	B	Eff. Date:	07-16-2009
Leads:	6#18	Literature:		Elec. Diagram:		Replaced By:	

Nameplate NP1256L

CAT.NO.	VL3504						
SPEC.	34C63-5422						
HP	.5						
VOLTS	115/230						
AMP	7.4/3.7						
RPM	1725						
FRAME	56C	HZ	60	PH	1		
SER.F.	1.25	CODE	J	DES	N	CLASS	B
NEMA-NOM-EFF	68	PF	66				
RATING	40C AMB-CONT						
CC		USABLE AT 208V	4.3				
DE	6203	ODE	6203				
ENCL	TEFC	SN					
	SFA 8.2/4.1						

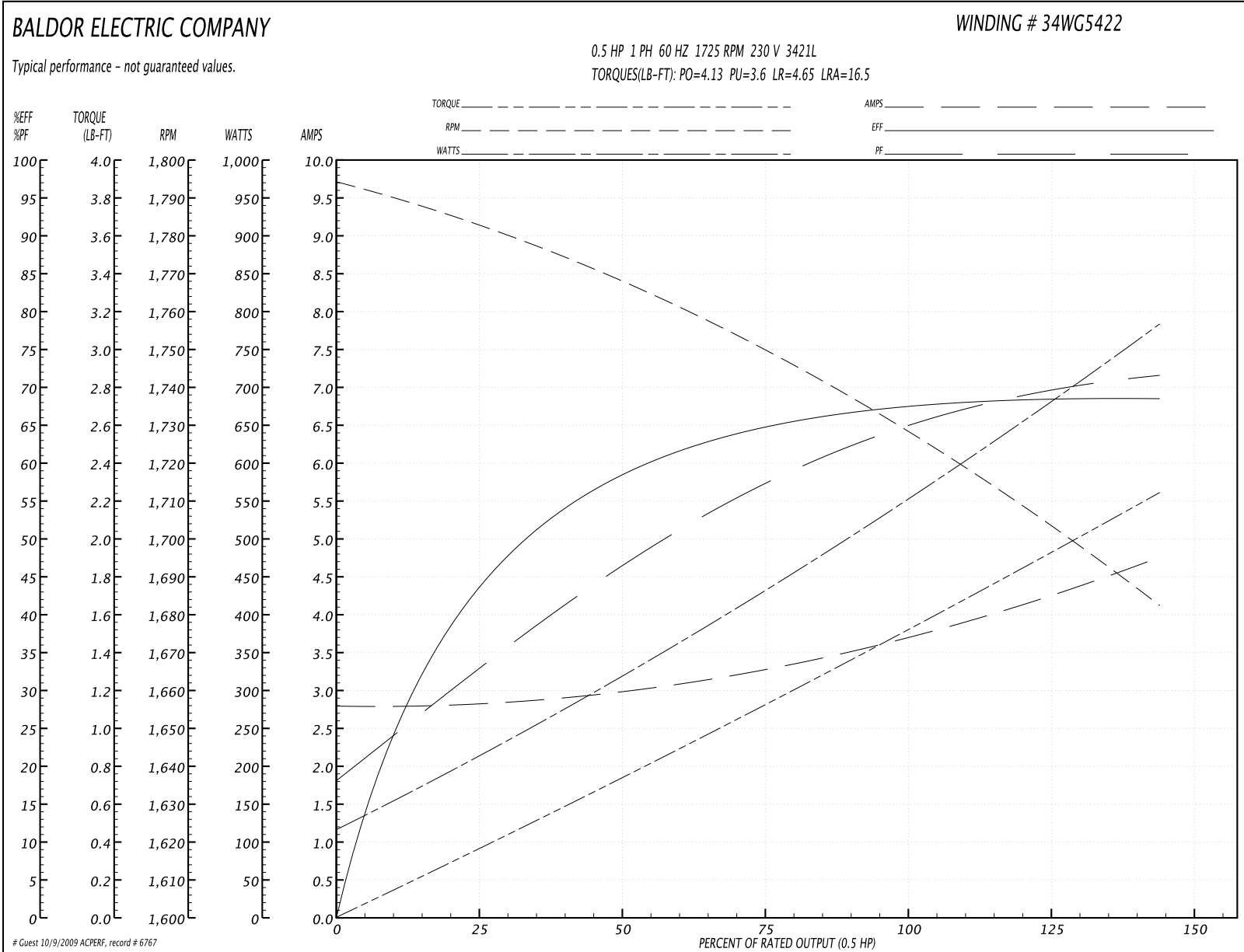
Parts List			
Part Number	Description	Quantity	List Price
SA005677	SA 34C63-5422	1.000 EA	
RA002423	RA 34C63-5422	1.000 EA	189.00 USD
EC1270A02SP	ELEC CAP, 270-324 MFD, 125V, 1.48D X 3.	1.000 EA	18.00 USD
NS2512A01	INSULATOR, CONDUIT BOX X	1.000 EA	3.00 USD
34CB3002A	CB CAST W/.88 DIA HOLE	1.000 EA	16.00 USD
34GS1029A01	GASKET, CONDUIT BOX	1.000 EA	3.00 USD
51XB1016A07	10-16 X 7/16 HXWSSLD SERTYB	2.000 EA	3.00 USD
11XW1032G06	10-32 X .38, TAPTITE II, HEX WSHR SLTD U	1.000 EA	4.00 USD
34EP3102A01SP	FR ENDPLATE, MACH	1.000 EA	82.00 USD
51XW0832A07	8-32 X .44, TAPTITE II, HEX WSHR SLTD SE	2.000 EA	3.00 USD
NS2500A01	INSULATOR, AUTO THER PROT	1.000 EA	3.00 USD
34CB4800SP	CAPACITOR COVER, STAMPED	1.000 EA	24.00 USD
34GS3000SP	GASKET, CAPACITOR BOX	1.000 EA	4.00 USD
51XB1016A05	10-16X5/16HX WA SL SR TYB (F/S)	2.000 EA	3.00 USD
HW5100A03SP	WAVY WASHER (W1543-017)	1.000 EA	3.00 USD
51XN1032A20	10-32 X 1 1/4 HX WS SL SR	2.000 EA	3.00 USD
34FN3002A01SP	EXTERNAL FAN, PLASTIC, .637/.639 HUB W/	1.000 EA	17.00 USD
34FH4002A01SP	IEC FH NO GREASER	1.000 EA	28.00 USD
51XW1032A06	10-32 X .38, TAPTITE II, HEX WSHR SLTD S	3.000 EA	4.00 USD
34CB4517	CB LID 4 MTG HOLES .22 DIA STAMPED, FOR	1.000 EA	6.00 USD
34GS1031A01	GASKET, FLAT CONDUIT BOX LID (LEXIDE)	1.000 EA	3.00 USD
51XW0832A07	8-32 X .44, TAPTITE II, HEX WSHR SLTD SE	4.000 EA	3.00 USD
HW2501D13SP	KEY, 3/16 SQ X 1.375	1.000 EA	3.00 USD
HA7000A04	KEY RETAINER 0.625 DIA SHAFTS	1.000 EA	3.00 USD

Parts List (continued)			
Part Number	Description	Quantity	List Price
34EP3300A24SP	PU ENDPLATE, MACH	1.000 EA	76.00 USD
MG1000G27	PAINT- S9282E CHARCOAL GREY	0.014 GA	
10XF0440S02	04-40 X 1/8 TYPE F HEX HD STAINLESS STIC	2.000 EA	2.00 USD
SP5056A24	MODEL 34 TYPE L STATIONARY SWITCH WITH L	1.000 EA	22.00 USD
HA3100A44	THRUBOLT 10-32 X 8.000	4.000 EA	3.00 USD
LB1125C01	STD (STOCK) CARTON LABEL BALDOR WITH FLA	1.000 EA	3.00 USD
LB5040	INSTRUCTION TAG, AC & DC	1.000 EA	3.00 USD
LC0001A01	4ONN LABEL / WARNING LABEL (LC0001 / LB1	1.000 EA	3.00 USD
NP1256L	ALUM, UL CSA CC, W/O THERMAL, LASER	1.000 EA	4.00 USD
34PA1005	PACKING GROUP, BALDOR	1.000 EA	12.00 USD

Performance Data at 230V, 60Hz, 0.5HP (Typical performance - Not guaranteed values)

General Characteristics							
Full Load Torque:	1.5 LB-FT			Start Configuration:	DOL		
No-Load Current:	2.8 Amps			Break-Down Torque:	4.13 LB-FT		
Line-line Res. @ 25°C.:	4.44 Ohms A Ph / 3.19 Ohms B Ph			Pull-Up Torque:	3.6 LB-FT		
Temp. Rise @ Rated Load:	63 C			Locked-Rotor Torque:	4.65 LB-FT		
Temp. Rise @ S.F. Load:	77 C			Starting Current:	16.5 Amps		
Load Characteristics							
% of Rated Load	25	50	75	100	125	150	S.F.
Power Factor:	32.0	46.0	59.0	66.0	72.0	80.0	72.0
Efficiency:	42.0	58.0	65.0	68.0	69.0	68.0	69.0
Speed:	1783.0	1765.0	1750.0	1730.0	1710.0	1680.0	1710.0
Line Amperes:	2.8	3.0	3.3	3.7	4.1	4.8	4.1

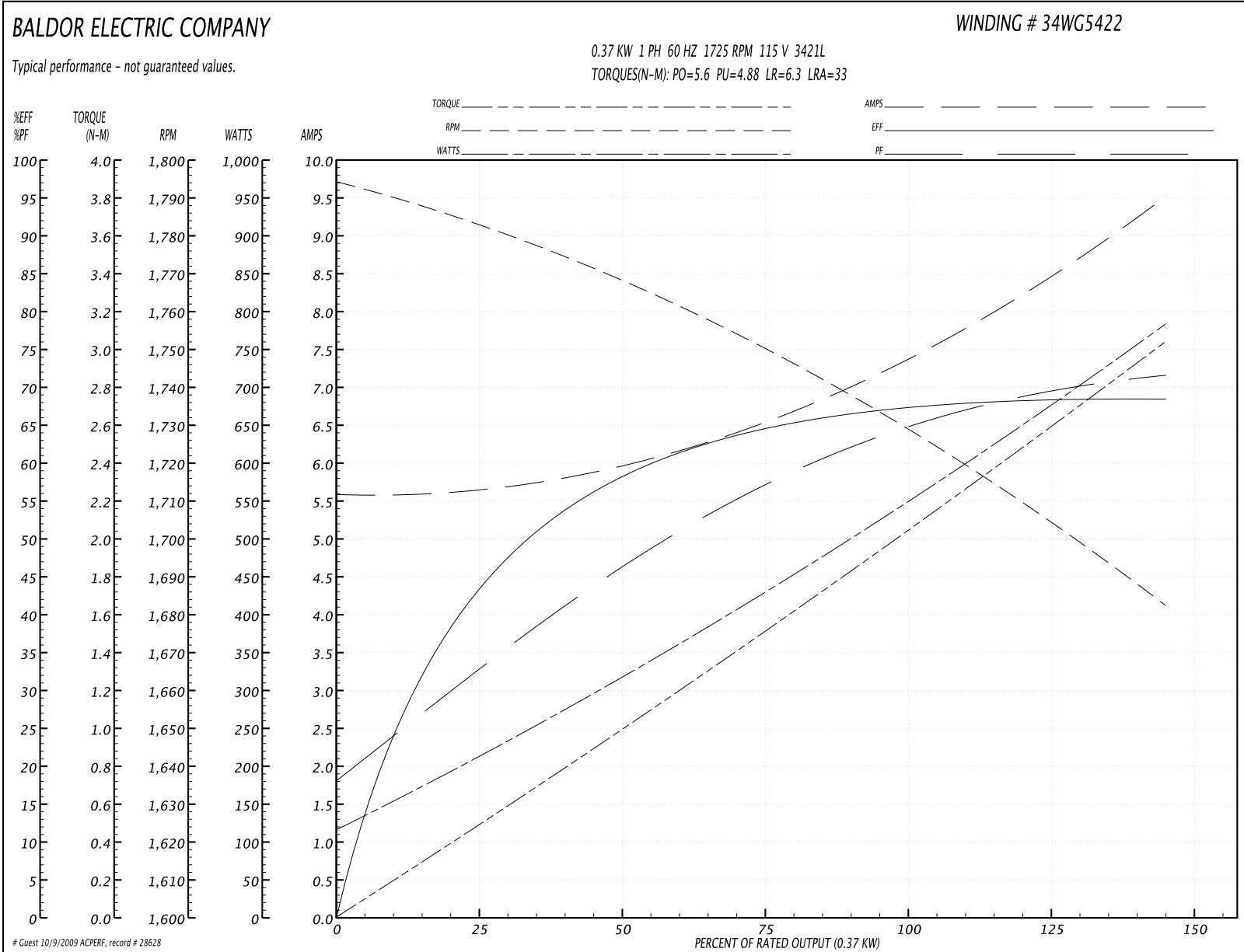
Performance Graph at 230V, 60Hz, 0.5HP Typical performance - Not guaranteed values

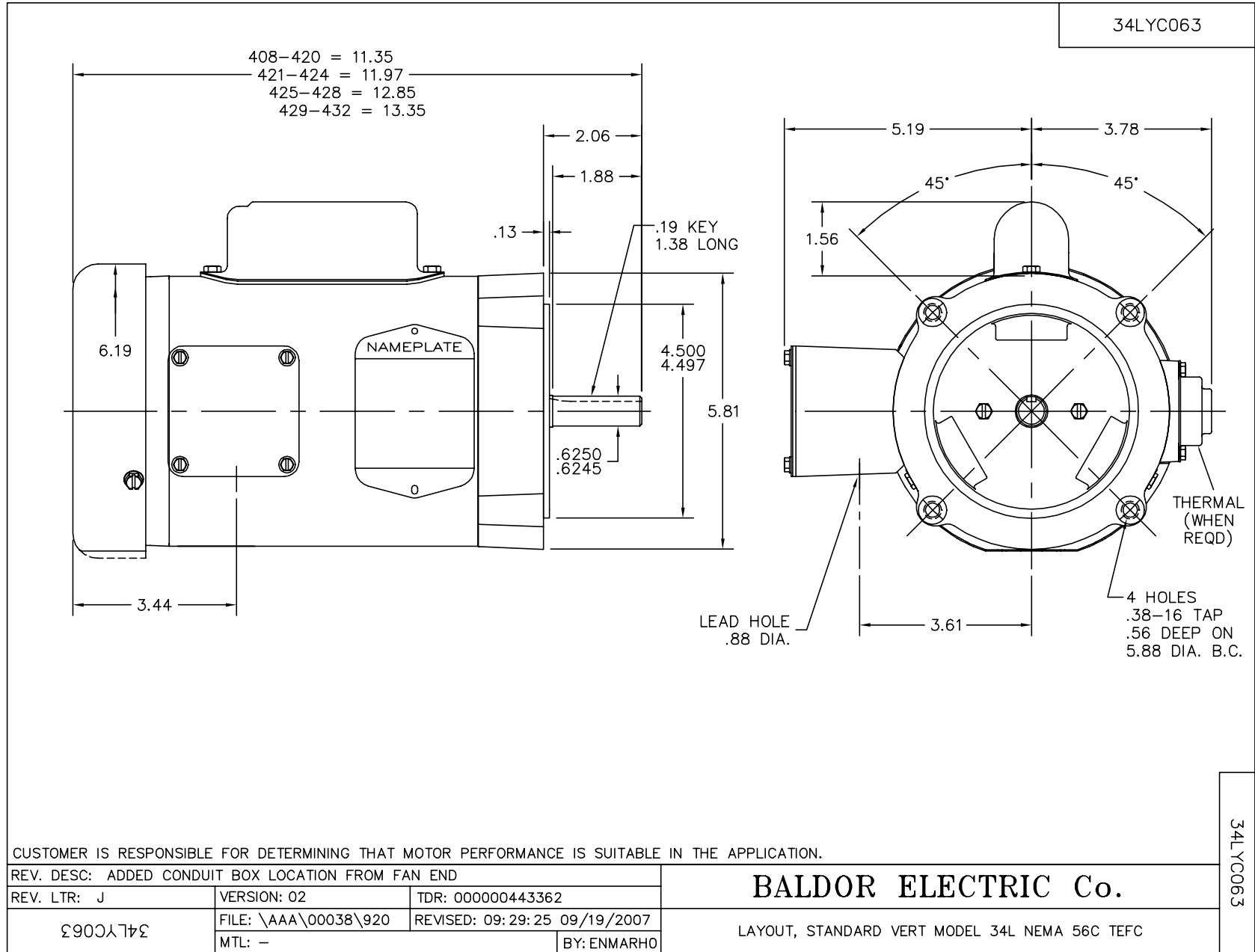


Performance Data at 115V, 60Hz, 0.37KW (Typical performance - Not guaranteed values)

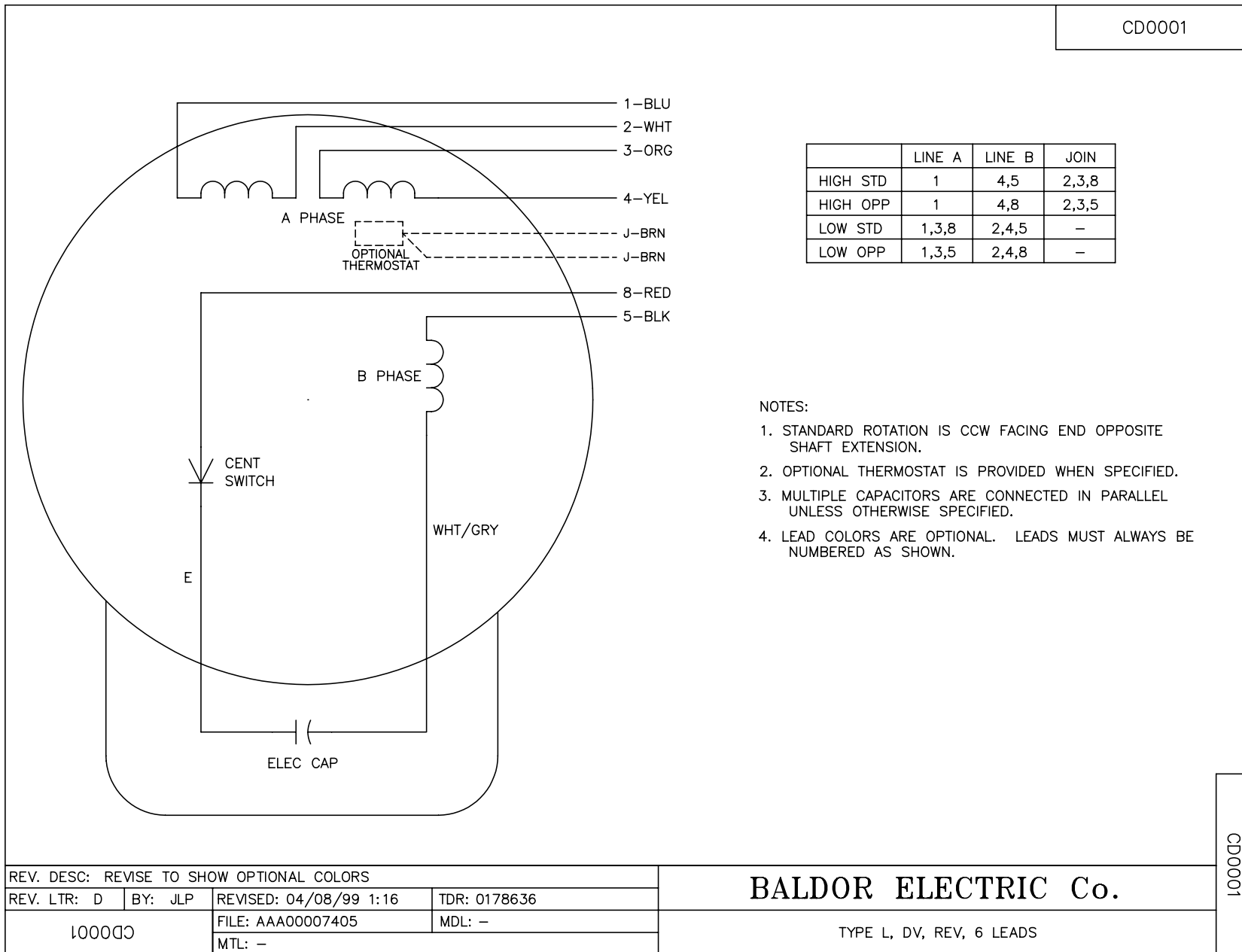
General Characteristics							
Full Load Torque:	2.03 N-M			Start Configuration:	DOL		
No-Load Current:	5.6 Amps			Break-Down Torque:	5.6 N-M		
Line-line Res. @ 25°C.:	1.06 Ohms A Ph / 3.13 Ohms B Ph			Pull-Up Torque:	4.88 N-M		
Temp. Rise @ Rated Load:	63 C			Locked-Rotor Torque:	6.3 N-M		
Temp. Rise @ S.F. Load:	77 C			Starting Current:	33.0 Amps		
Load Characteristics							
% of Rated Load	25	50	75	100	125	150	S.F.
Power Factor:	35.0	47.0	57.0	64.0	70.0	72.0	70.0
Efficiency:	41.9	58.2	64.8	67.9	68.9	67.9	68.9
Speed:	1783.0	1765.0	1750.0	1730.0	1710.0	1680.0	1710.0
Line Amperes:	5.6	6.0	6.6	7.4	8.2	9.6	8.2

Performance Graph at 115V, 60Hz, 0.37KW Typical performance - Not guaranteed values





CD0001



	LINE A	LINE B	JOIN
HIGH STD	1	4,5	2,3,8
HIGH OPP	1	4,8	2,3,5
LOW STD	1,3,8	2,4,5	-
LOW OPP	1,3,5	2,4,8	-

NOTES:

1. STANDARD ROTATION IS CCW FACING END OPPOSITE SHAFT EXTENSION.
2. OPTIONAL THERMOSTAT IS PROVIDED WHEN SPECIFIED.
3. MULTIPLE CAPACITORS ARE CONNECTED IN PARALLEL UNLESS OTHERWISE SPECIFIED.
4. LEAD COLORS ARE OPTIONAL. LEADS MUST ALWAYS BE NUMBERED AS SHOWN.

REV. DESC: REVISE TO SHOW OPTIONAL COLORS			
REV. LTR: D	BY: JLP	REVISED: 04/08/99 1:16	TDR: 0178636
100000		FILE: AAA00007405	MDL: -
		MTL: -	

BALDOR ELECTRIC Co.

TYPE L, DV, REV, 6 LEADS

CD0001