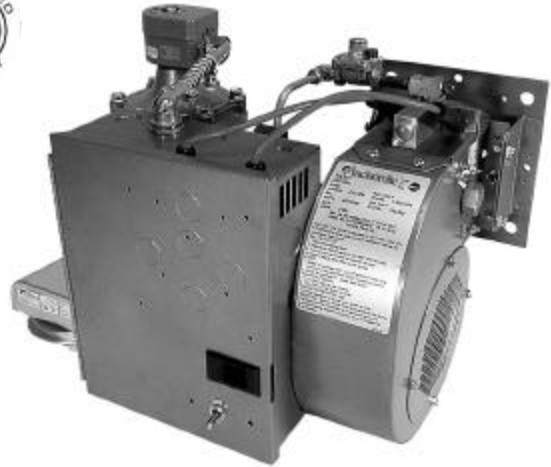


Replacement Parts List

Incinomite Model J121DS



*Installation and Service Manual 8471 15
Date coded 5099 or later*

- Features S87D Honeywell Electronic Control.
- First production December 21, 1999 (date code 5099).
- Model J121-DS ignitor assembly features an air adjustment screw to modify gas air ratios for improved pilot light offs with air shutters full open.



Midco[®]
INTERNATIONAL

Midco International Inc.

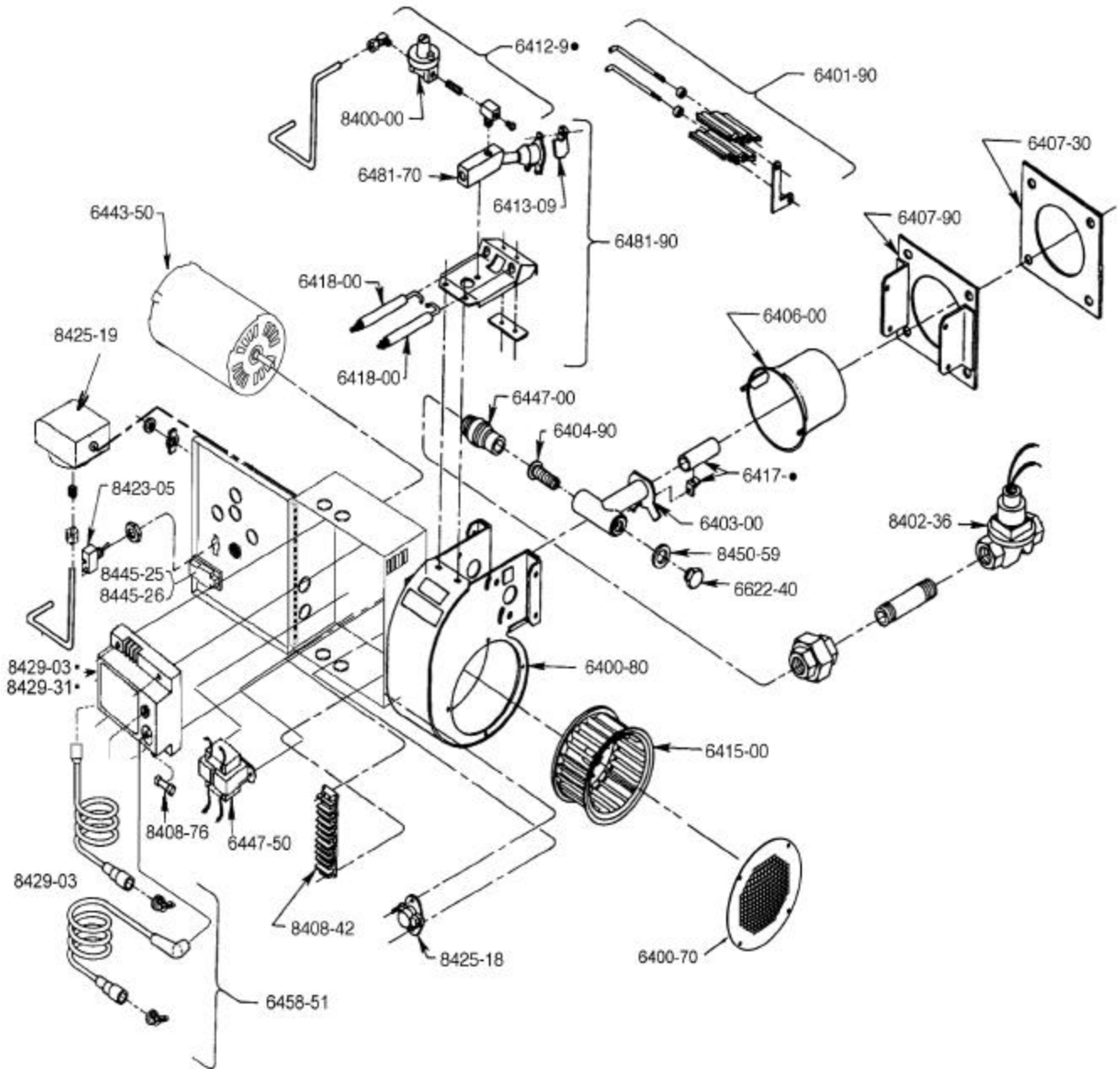
4140 West Victoria Street
Chicago, Illinois 60646
tel 773.604.8700
fax 773.604.4070
web www.midco-intl.com
e-mail sales@midco-intl.com

IMPORTANT: Availability of parts as well as specifications are subject to change without notice.
Please consult factory for item availability.

AVOID ERROR IN PARTS SELECTION. When ordering, use complete MIDCO part number and description. Furnish burner model number, bill of material number and date code from specification plate.

Quality Designed for Proven Performance

602
8472 72
Printed in USA



Refer to listing for proper application

<i>Part #</i>	<i>Description</i>	<i>Part #</i>	<i>Description</i>
6400-70	Inlet Ring	6443-50	Motor 1/6 HP 115/230/1/50/60
6400-80	Blower Housing Replacement Kit (order Blower Wheel, Motor, Shutters, Inlet Screen, Manifold, etc., separately)		TEFC -- J121-DS only
6401-90	Shutter Replacement Kit	6447-00	Input Stop Nipple
6403-00	Manifold	6447-50	Transformer 115/1/50-60 Primary, 24V-30VA Secondary
6404-90	Input Adjuster Screw Assembly	6458-51	Electric Wires, Boots and Strain Reliefs
6406-00	Blast Tube - J121-DS	6481-70	Ignitor Gas Inlet Block, Tube and Ignitor Tip Assembly -- J121-DS
6407-30	Flange Gasket	6481-90	Ignitor Assembly - J121-DS
6407-90	Mounting Flange Replacement Kit (order Gasket separately)	6622-40	Input Adjuster Cap
IGNITOR CONTROL PIPING			
Assembly includes Brass Orifice Tee (with drilled Orifice), Pressure Tap, Regulator and Compression Fitting			
6412-96	J121-DS NATURAL -- #50 Drill (.070)	8400-00	Ignitor Regulator 1/8 NPT (Maxitrol RV12, RV12LT)
6412-98	J121-DS PROPANE -- #52 Drill (.063)	8402-36	1" NPT Gas Valve 24/1/50-60 -- J121-DS (ITT K3A461S)
6413-09	Ground Barrier Kit	8408-42	10 Positional Terminal Strip
6415-00	Blower Wheel - J121-DS	8408-76	3-Amp Type 3AG Glass Fuse -- 1/4" Dia. x 1-1/4" LG
6417-52	Main Gas Port and Tube Kit -- J121-DS PROPANE	8423-05	On-Off Toggle Switch
6417-54	Main Gas Port and Tube Kit -- J121-DS NATURAL	8425-18	Thermal Switch (T-O-D 60T-13-203420)
6418-00	Electrode (spark or flame) - 2 required	8425-19	Blower Air Switch -- J121-DS
		8429-03	DSI Electronic Control Board (MH S87D1087)
		8429-31	DSI Electronic Control Board (MH S87K1016)
		8445-25	Latch Body
		8445-26	Latch Body Snap clip
		8450-59	Input Adjuster Sealing Gasket
		2030801 ¹	PROPANE Conversion Kit -- J121-DS

NOTES

1. Not Illustrated.



Midco International Inc. 4140 West Victoria Street * Chicago, Illinois 60646
tel 773.604.8700 fax 773.604.4070 web www.midco-intl.com email sales@midco-intl.com



602
8472 72
Printed in USA