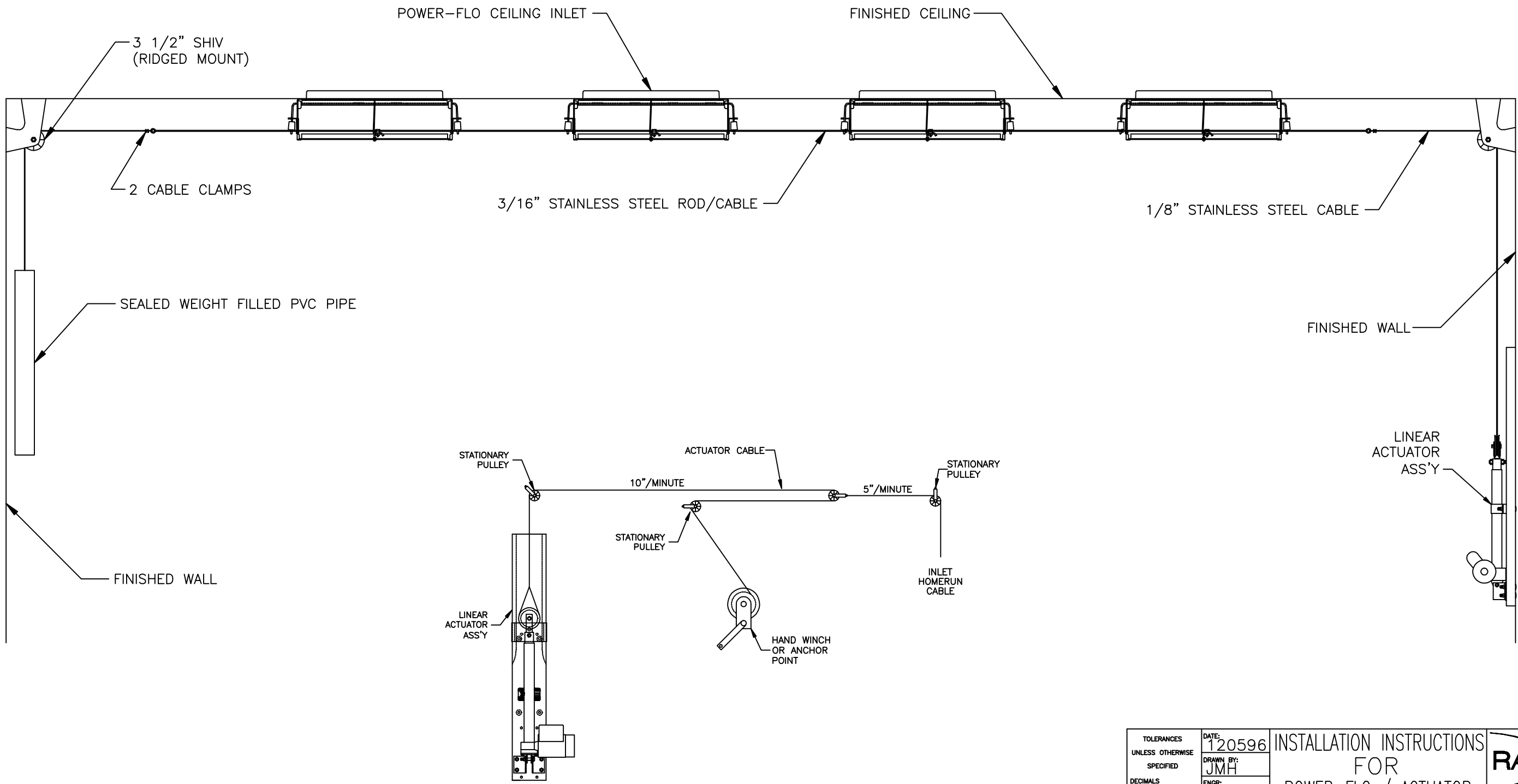



DRAWING REVISIONS				
REV.:	BY:	DATE:	DESCRIPTION OF CHANGE	ECO NUMBER:
A	JMH	041306	ADD PREFERRED RIGGING METHOD DETAIL	N/A



PREFERRED METHOD OF RIGGING WITH VENTRA CONTROLS

TOLERANCES UNLESS OTHERWISE SPECIFIED DECIMALS INCH .X ± .060 .XX ± .030 .XXX ± .015 ANGLES ± 1°	DATE: 120596	INSTALLATION INSTRUCTIONS FOR POWER-FLO / ACTUATOR SYSTEM LINKAGE CONFIGURATION INSTALLATION INSTRUCTION	 <i>Success Is In The Air</i> 145 JACKSON AVE. SO., COKATO, MN. 55321 NEW DRAWING NUMBER IS10046-1
	DRAWN BY: JMH		
	ENGR:		
	APPROVED:		
OLD DWG. # 1127-A-96	SCALE: NONE	SHEET 1 OF 3	