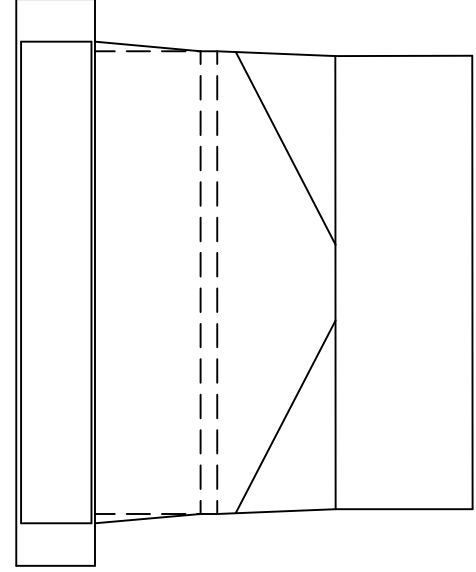
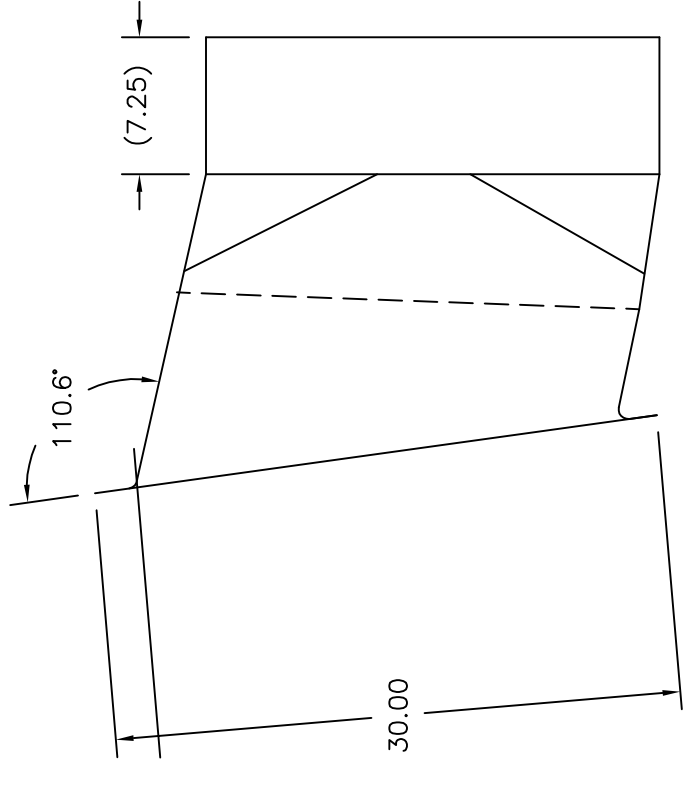
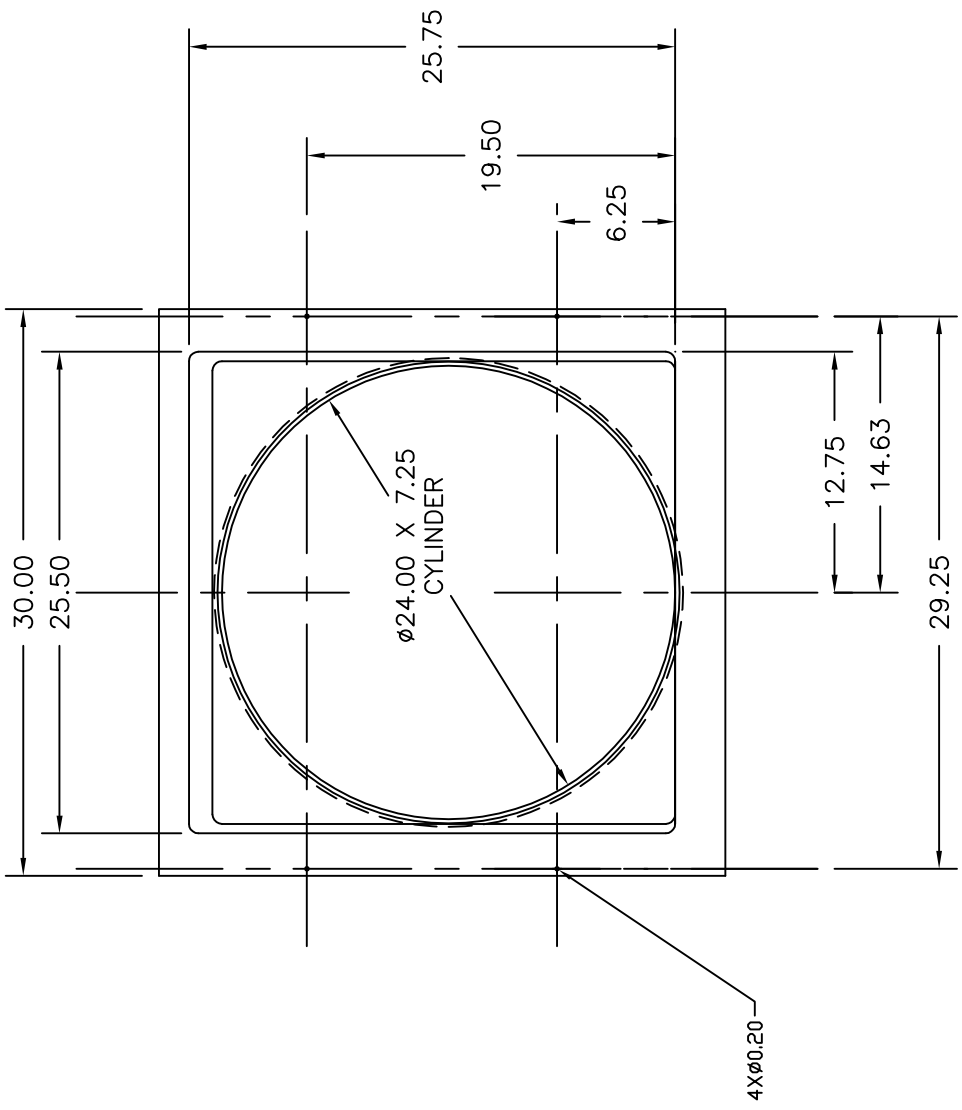


DRAWING REVISIONS

REV.:	BY:	DATE:	DESCRIPTION OF CHANGE	ECO NUMBER:
A	JFW	091107	NEW HOLES FOR SHUTTER CLIPS	RA1279



NOTE:

ALL INSIDE AND OUTSIDE CORNERS SHALL HAVE A MINIMUM RADIUS OF 1/2" UNLESS OTHERWISE NOTED.

MATERIAL THICKNESS SHALL BE 3/16".

NOTE:
ALL DIMENSIONS SHOWN ARE FINAL INSIDE MEASUREMENTS. NO CONSIDERATIONS HAVE BEEN MADE TO ACCOUNT FOR MATERIAL OR CASTING SHRINKAGE.

TOLERANCES UNLESS OTHERWISE SPECIFIED FRACTIONS ± 1/32 DECIMALS INCH .X ± .030 .XX ± .020 .XXX ± .010 ANGLES ± 0'30"		DATE: 091107 DRAWN BY: JFW ENGR:	HOUSING FOR FW 24" WALL FAN WHITE FIBERGLASS	RAYDOT LLC Success Is In The Air 145 JACKSON AVE. SO., COVATO, MN. 55321 NEW DRAWING NUMBER FP805E
OLD DWG. # 1374-A-95 SCALE: NONE	DRAWING DETAIL	SHEET 1 OF 1		