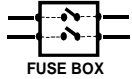
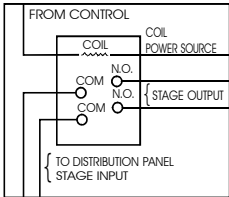


**WE RECOMMEND INSTALLING A FUSE BOX ON EACH STAGE**



**DO NOT DRILL THE SIDES OF THE UNIT CONTROL. USE AVAILABLE KNOCK OUTS AT THE BOTTOM OF THE UNIT.**

**THE CAPACITY OF THE INTERNAL RELAYS IS 6 AMP. "MOTOR LOAD". WE RECOMMEND INSTALLING EXTERNAL RELAYS ON "ON/OFF" STAGES HOOKED TO MOTORS.**



**WATER METER:**

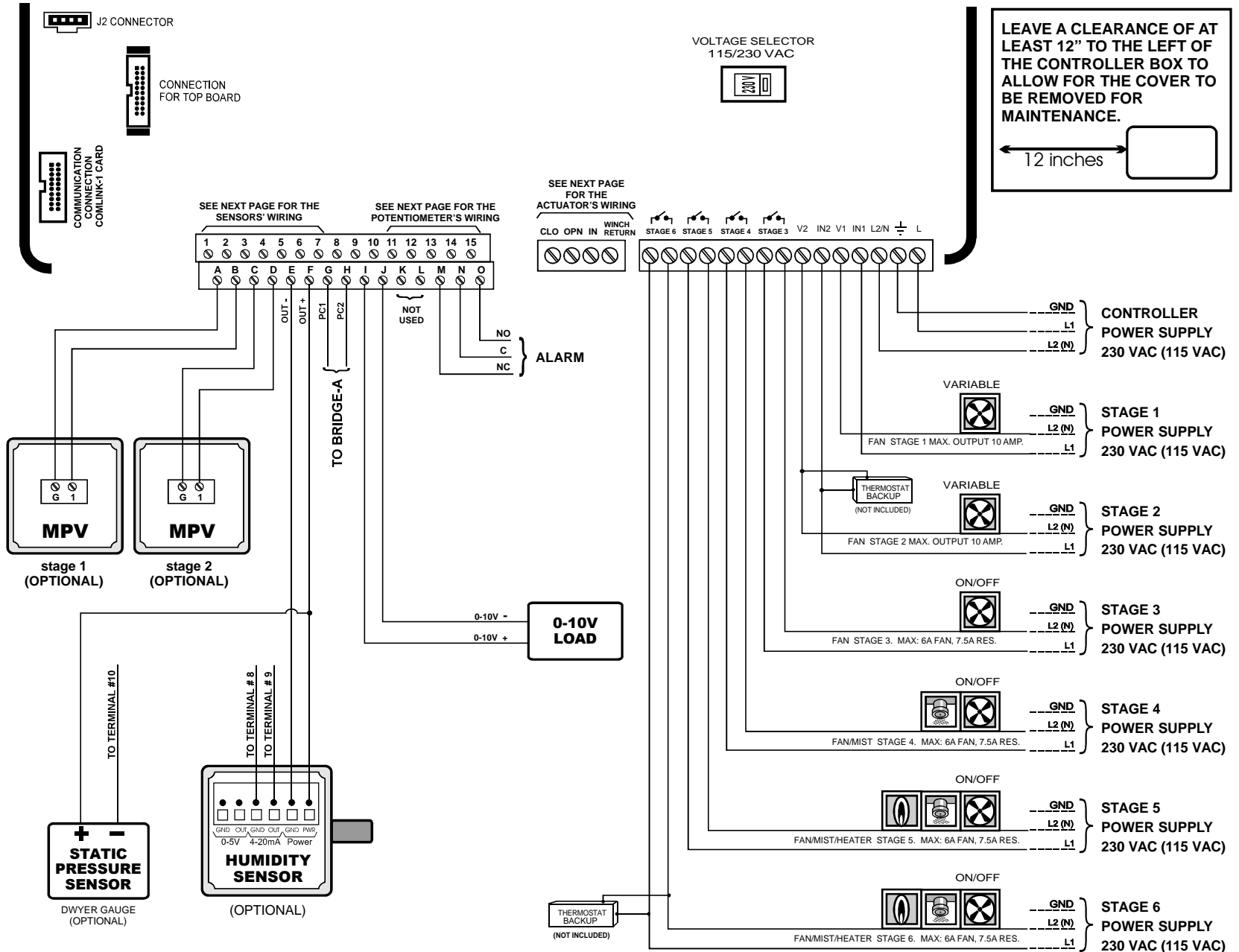
The water meter output should be a dry contact and should not pulse faster than 60 times a second (60 Hz).

A 22/12 AWG gauge cable no longer than 2000 feet (0.6 km) can be used to connect the water meter. Do not use a cable longer than 2000 feet even if a larger cable is used.

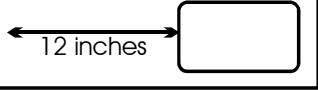
**DO NOT RUN THE METER CABLE OUTSIDE THE BUILDING!!**

**NOTES :**

1. Installation of a good quality alarm system is strongly suggested to warn of power failures and high/low temperatures.
2. Provide a surge protection (including lightning protection) from the power supply to the controller and from the control to the sensors. Consult a certified electrician if required.
3. Same phases must be used to power the variable fans and the controls on 3 phases power.



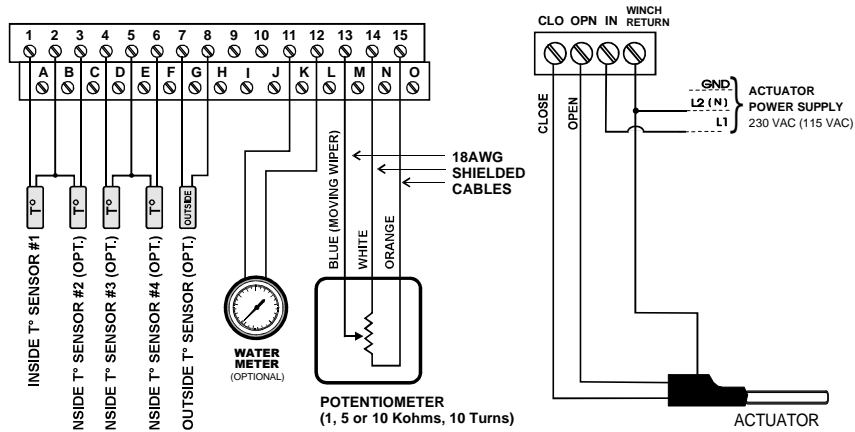
**LEAVE A CLEARANCE OF AT LEAST 12" TO THE LEFT OF THE CONTROLLER BOX TO ALLOW FOR THE COVER TO BE REMOVED FOR MAINTENANCE.**



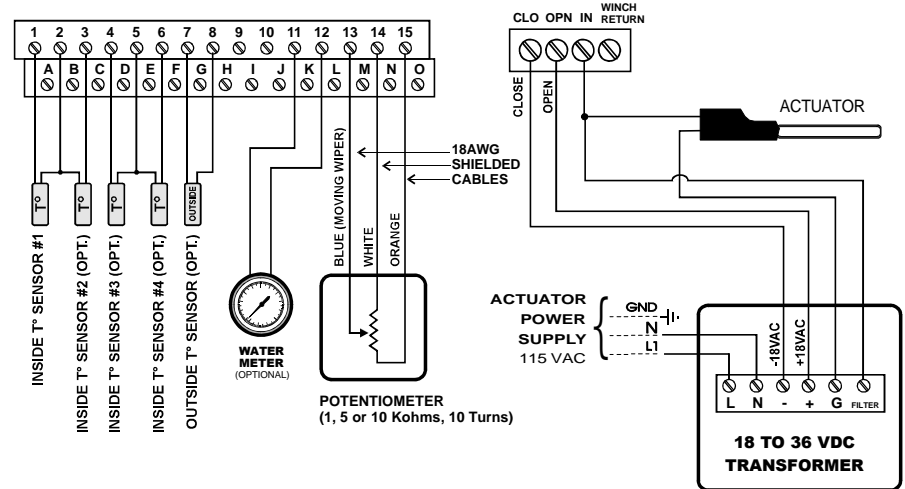
**WARNING:**  
SUFFICIENT BACKUP THERMOSTATS MUST BE USED TO ENSURE VENTILATION IN CASE OF A POWER FAILURE

WIRING DIAGRAM	
<b>EXPERT 2V4SA</b>	
#891-00327	Rev.00

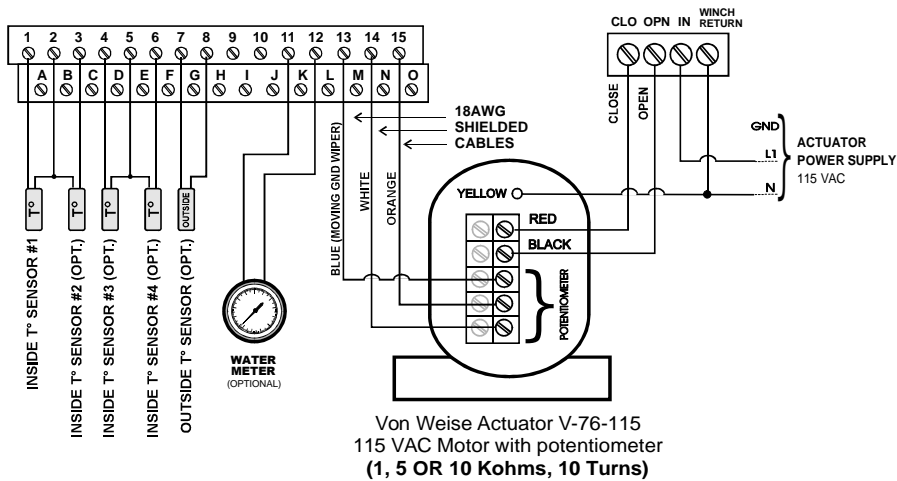
## STANDARD ACTUATOR - AC MOTOR



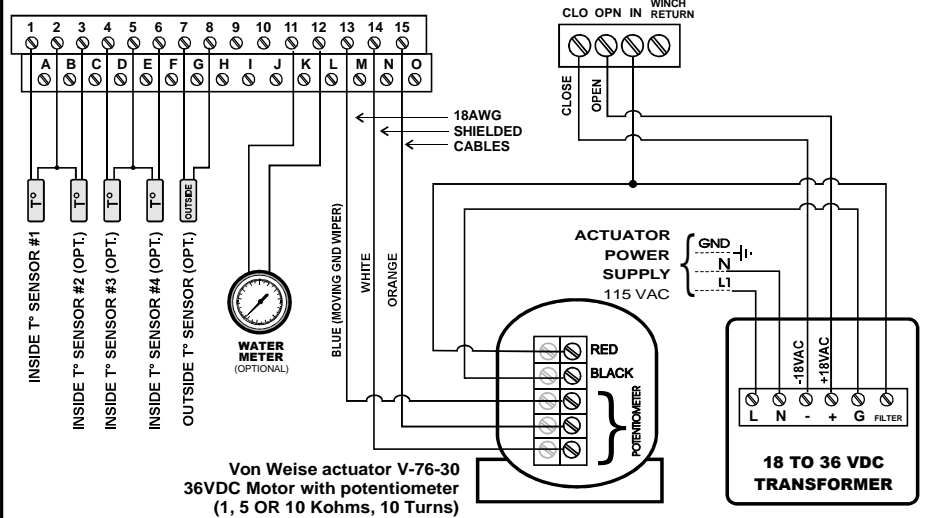
## STANDARD ACTUATOR - DC MOTOR



## VON WEISE V-76-115 ACTUATOR- AC MOTOR



## VON WEISE V-76-30 ACTUATOR - DC MOTOR



WIRING DIAGRAM

EXPERT 2V4SA

#891-00327

Rev.00