



Quick Start and Installation Guide

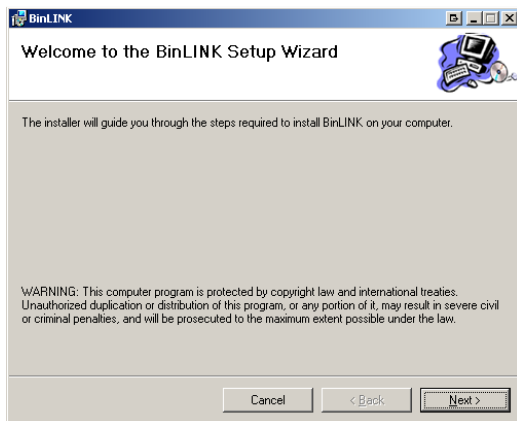
Welcome to BinLink by HerdStar! To get started with reading your BinTrac Indicators, please make sure you meet the requirements for the software and follow the installation guide below.

BinLink requires:

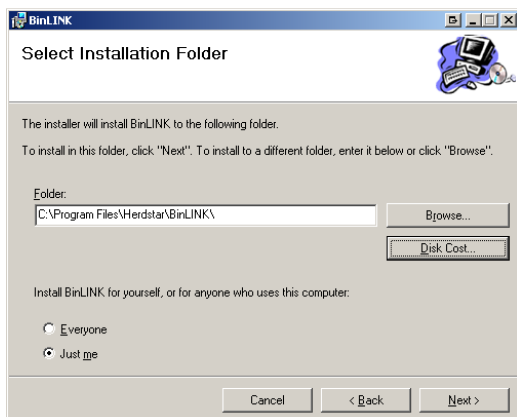
- PC with 1000MHz or faster processor (single or multi-processor) or higher
- 512MB RAM or higher
- Super VGA (800 X 600) or higher-resolution video adaptor and monitor
- CD-ROM or DVD drive (for installation)
- Keyboard and Mouse or compatible pointing device
- Permanent Ethernet or WIFI network adaptor.

Installation

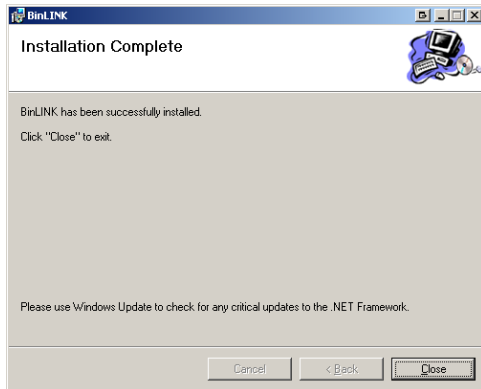
Insert the BinLink CD. The BinLink installation process should start. If it does not, navigate to your CD/DVD ROM drive (WinXP: My Computer→BinLink vx.x.x.x /Vista: Computer→ BinLink vx.x.x.x) and open BinLINK Setup.msi. You should be greeted with the following screen:



Click next to get to the installation settings screen. Here you can choose your own installation directory and for whom the program will be installed.



Click next and then confirm the installation by clicking next yet again. The BinLink software will be installed on your computer.



You may now click close, the software is installed.

USB to Serial Adapter Installation (Optional for Serial)

At this point you may wish to install your USB Serial Converter. To do so, follow the steps given below.

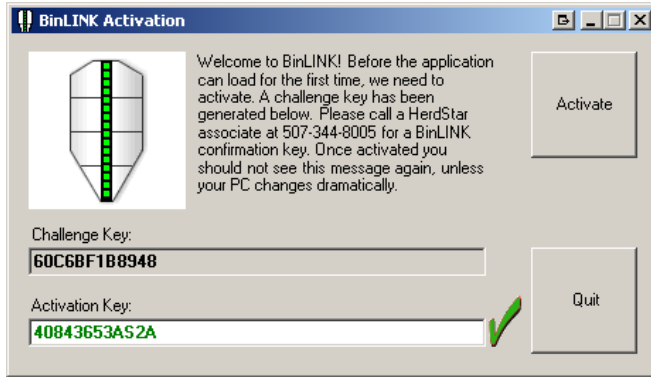
With the BinLink in the drive, navigate to your cd/dvd rom drive and to the Serial converter folder:

- WinXP: My Computer → BinLink vx.x.x.x → UC320 Serial Adaptor Driver → Driver → Setup.exe
- Or
- Vista: Computer → BinLink vx.x.x.x → UC320 Serial Adaptor Driver → Driver → Setup.exe

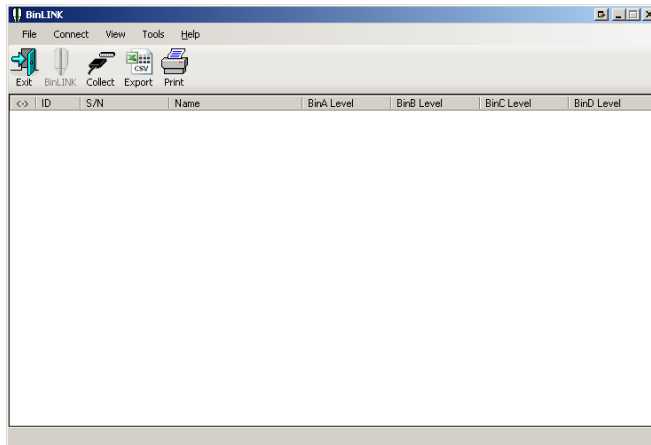
Follow the onscreen instructions given by that setup application and plug in your USB converter device.

Starting BinLink

We can now start the BinLink application for the first time. The first time you start the application, you will be greeted with an activation screen. A challenge key should be automatically generated for you, you will need to call HerdStar Offices at 507-344-8005, read them the challenge key and you will be given an Activation key. Once the Activation key is accepted your screen should look like the following:



After you get the green checkbox you may click the activate button. The application will restart. You may get a message about the selected port being in use, you may disregard this message because you have not yet picked an appropriate port. You will see the following screen:



This section will explore the BinLink interface

Buttons

- BinLINK
 - Once data has been collected with the Collect button, the BinLink button may be use to view bin information. Double clicking on a bin will also accomplish this.
- Collect

- Connects, collects and disconnects from the configured connection (Serial, Dial-Up, or TCP/IP), showing the data below.
- Export
 - Exports the selected bin information of the selected bin(s) to a CSV file for viewing in Microsoft Excel, or compatible spreadsheet viewing application.
- Print
 - Prints the bin information for the selected bin(s). Clicking this will bring up a print preview dialog before printing.
- Exit
 - Exits the application (settings will persist).

Menus

- File
 - Open
Opens a saved connection settings file.
 - Save As...
Saves the current connection settings to a file.
 - Print...
Prints the levels for the selected bins.
 - Exit
Exits the application (current settings will persist).
- Connect
 - Via Serial
Connects and collects the bin data using the settings for the serial connection.
 - Via Dial-Up
Connects and collects the bin data using the settings for the Dial-Up connection.
 - Via TCP/IP
Connects and collects the bin data using the settings for the Cellular/Tcpip/internet connection.
- View
 - Settings
View and change connection settings for serial, Dial-Up, and Tcpip. Clicking ok, will check that valid entries have been made. The serial port will be opened and checked for availability. If it is not available you will be notified and connections using that configuration option will fail.

Serial

Serial Com port: select an available and open com port to connect to your com hub. The included cable must be attached between the port you select and the com hub's serial port.

Dial-Up

Modem Com port: select the port your modem responds on.

Phone number: enter the phone number of the site you wish to dial. (note that a com hub must be configured for modem access

TCP/IP Internet

IP Address: enter the IP address of the site you wish to connect to. (note that the site must be configured with a Lantronix or equivalent device to bridge the serial interface to TCP/IP LAN or internet connection).

Port: The port that the Lantronix device is configured on, (or forwarded to through a router). Default is 10001.

- Tools
 - Export Selected Bin Levels...
Exports the selected bins to a CSV spreadsheet (viewable in Microsoft Excel, Open Office spreadsheet or compatible application).
 - Export All Bin Levels...
Exports all available bins to a CSV spreadsheet (viewable in Microsoft Excel, Open Office spreadsheet or compatible application).
- Help
 - About
Displays application version.

Technical Support

If you should encounter any serious problems or would like to report a bug, please call HerdStar Offices at 507-344-8005, or send an email to service@herdstar.com