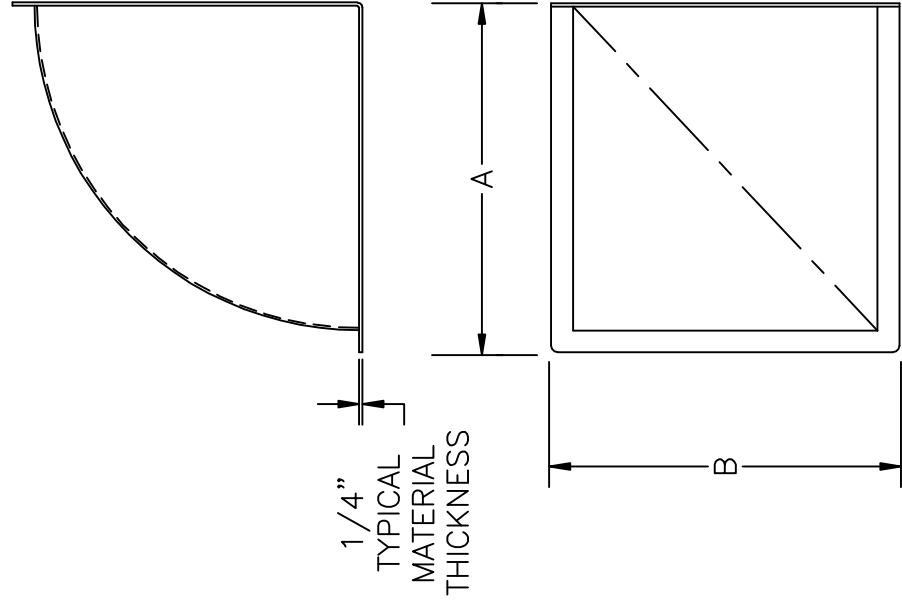
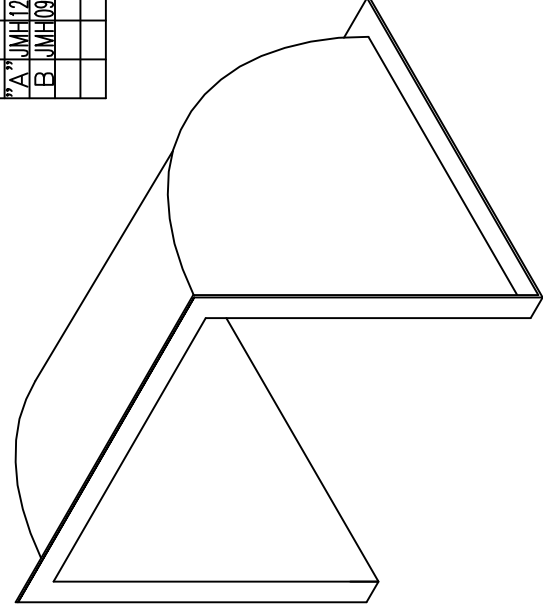


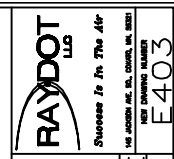
DRAWING REVISIONS

| REV. | BY: | DATE: | DESCRIPTION OF CHANGE | ECO NUMBER: |
|------|-----------|-------|------------------------------|-------------|
| A | JMH121902 | | VERIFY AND UPDATE DIMENSIONS | N/A |
| B | JMH090908 | | VERIFY AND UPDATE DIMENSIONS | N/A |



| PART # | A DIM. | B DIM. | FAN MODEL |
|--------|---------|---------|-----------|
| E403 | 12 3/4" | 12 3/4" | FW-0805 |
| E402 | 14 3/4" | 14 3/4" | FW-1013 |
| E404 | 19 1/4" | 19 1/4" | FW-1216 |
| E405 | 22" | 22" | FW-1629 |
| E406 | 26 1/2" | 26 1/2" | FW-20" |
| E407 | 31 1/2" | 30" | FWL-2466 |

| | |
|---------------------------------------|----------|
| TOLERANCES UNLESS OTHERWISE SPECIFIED | 041802 |
| FRACTIONS ± 1/32 | AS SHOWN |
| DECIMALS ± .005 | |
| HOLE ± .010 | |
| ANGLES ± .030° | |
| ALL DIMS. ± .010 | |



90°
PIT FAN
ELBOWS

NONE PARTS DETAILS TABLE
0733-A-02
PAGE 1 OF 1
E403